

Telehandlers Operating height up to 7 meters



**WACKER
NEUSON**
all it takes!



**ASK ABOUT
THE BEST
HEAVY INDUSTRY
WARRANTY
5 YEARS**



Why the range of telehandlers from Wacker Neuson is ... all it takes!

1. Quality that you can count on.

Designed and manufactured in Germany our compact telehandlers have the payload capacities that impress. You are therefore certain to find the right machine for your specific requirements profile. Of course, all our telehandlers are characterized by sophisticated technology and a high level of user friendly functions for the operator.

2. Tuned for economic efficiency.

Low consumption, low emissions, powerful hydraulics, quick work – with our telehandlers you have the best partner at your side. Safety is always paramount for Wacker Neuson and with intelligent assist systems, such as the Vertical Lift System (VLS), this also proves Wacker Neusons commitment to a safe work environment.

3. Versatile options.

Thanks to a variety of attachments, the performance of Wacker Neuson telehandlers extends far beyond traditional transport work: our machines prove themselves when working in the warehouse, as well as using various hydraulic attachments. Whether in forklift or bucket mode, you can rely on the sturdy technology.

Wacker Neuson – all it takes!

We offer products and services designed to meet your high expectations and diverse applications. Wacker Neuson telehandlers are reliable and can perform in the harsh Australian environment. We do our best every day to ensure your success.

Telehandler expertise that creates benefits.



High payloads

Our telehandlers are designed for performance. This enables you to achieve a quick and high level of materials handling for any application.



Small turning radius, great performance

With the very maneuverable telehandlers, you can turn in the smallest area and therefore even maneuver on tight construction sites.



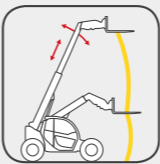
Better view, more safety

You benefit from improved handling and maximum safety, thanks to an optimal view of the attachment and work environment.



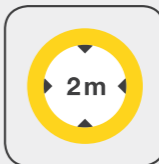
Telehandlers always at the forefront

EquipCare connects you with your machines and provides you with transparency in fleet management. With regards to maintenance requirements or malfunctions for instance, the machine itself will notify you. It does this in real time to your mobile phone or your computer.



Work safer than ever

The Vertical Lift System (VLS) switches intelligently into the telescoping movement and moves the load in an almost vertical line.



Easy to manoeuvre

Dimensions of height and width under 2 meters qualify the models TH412 and TH627 for working in buildings and in tight spaces.

Overview of all telehandlers.



TH412

TH627

TH745

Max. stacking height:
Max. payload:

4,301 mm
1,250 kg
> Page 04

5,790 mm
2,700 kg
> Page 08

7,017 mm
4,500 kg
> Page 12

Year-round application:
A wide variety of attachments are available.



Optimized lift height, dimensions and machine performance

Electronically regulated drive system with different driving modes for highest efficiency and flexibility

Comfortable cabin with generous space, perfect visibility and ergonomics

Compact and powerful: the telehandler TH412.

	TH412
Max. payload (kg)	1,250
Max. stacking height (m)	4.30
Engine output (kW)	18.4 / 33.3*
Operating weight (kg)	2,750–2,900

* optional

Powerful engines of emission standard stage V: 18.4 kW (25 hp) as standard and optional for more power 33.3 kW (45.3 hp) with DOC + DPF

Less than 2 m overall height – ideal for low passages such as underground garages

High flow performance hydraulics raise the discharge volume to 70 l/min for the use of a great variety of attachments (optional)

VLS (Vertical Lift System) for higher productivity and safety

LED lighting (optional): optimum illumination thanks to LED work lights in front and rear

Ergonomic comfort cabin with optimized overview

Speed increase to 30 km/h optionally possible

Electric parking brake with hill-hold function for maximum safety

Compact machine with high maneuverability and transportable on a car trailer

Electronically regulated drive system with different driving modes for the highest efficiency and flexibility

Three types of steering for maximum flexibility: all-wheel steering, front wheel steering, crab steering

100% differential lock – switch on for maximum traction and pushing power, switch off for low tire wear

Flexibility and efficiency.

Efficient electronically regulated drive system with different driving modes. Included as standard:

- ✓ In **auto mode**, the machine makes 100% performance available
- ✓ **ECO mode** optimizes the engine speed for the greatest possible fuel savings and noise reduction

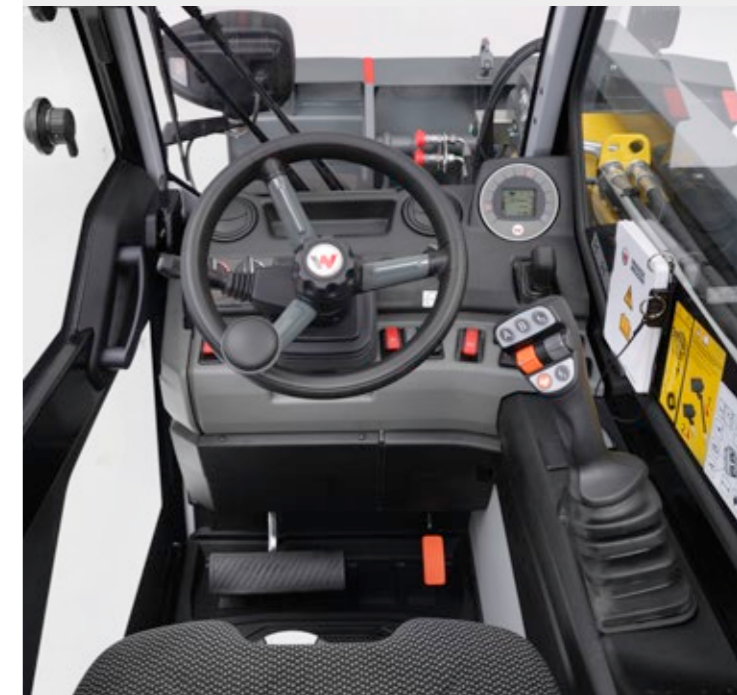
A further driving mode can be optionally selected:

- ✓ In **attachment mode**, the performance of the attachment is kept constant even with changing loads
- ✓ In **M-Drive mode**, the engine speed can be preset and the travel speed regulated with the drive pedal



Perfect ergonomics and comfort.

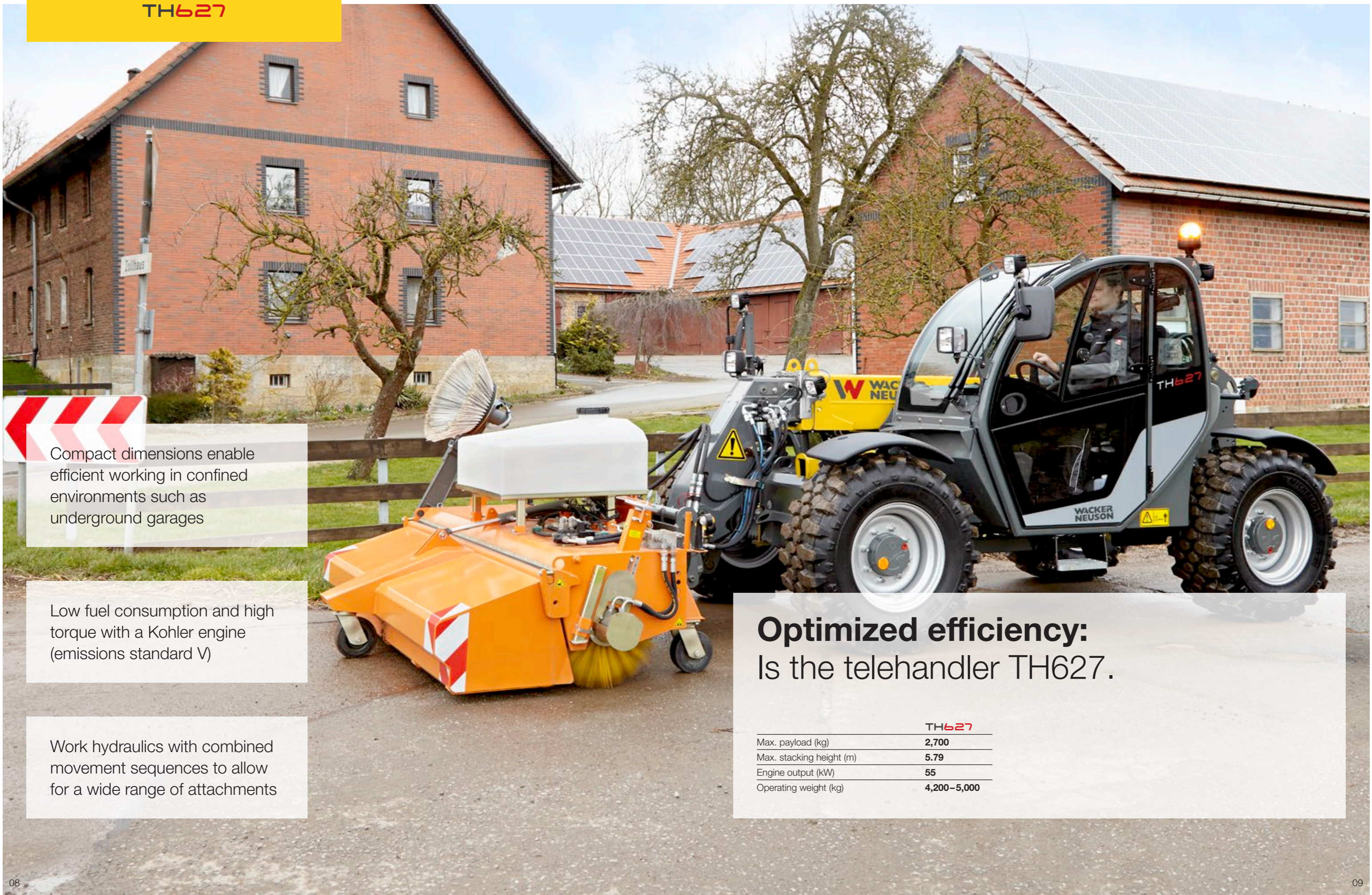
The cabin is impressive with its generous space, optimum overview and perfect ergonomics. The arrangement of the cabin elements is consistent with a modern operating philosophy, for efficient and fatigue-free working. Features such as the armrest with integrated stowage compartment, sun blind, an optimized heater and ventilation and the optional air-conditioning system additionally ensure an extraordinary high level of comfort.



Efficient lifting and lowering.

Work efficiently with complete to high productivity and safety — with the Vertical Lift System (VLS) operator assistance system, you will master this challenge with ease. The smooth and rapid lifting and lowering of the telescopic arm with its simultaneous semi-automatic telescopic movement allows even less-experienced operators to operate based on fluid working principles. The almost vertical lifting and lowering movement also makes the telehandlers very stable since the load does not reach the overload range.





Compact dimensions enable efficient working in confined environments such as underground garages

Low fuel consumption and high torque with a Kohler engine (emissions standard V)

Work hydraulics with combined movement sequences to allow for a wide range of attachments

Optimized efficiency: Is the telehandler TH627.

	TH627
Max. payload (kg)	2,700
Max. stacking height (m)	5.79
Engine output (kW)	55
Operating weight (kg)	4,200–5,000

VLS (Vertical Lift System)
for higher productivity and
overload protection

Massive quickhitch plate
as in wheel loaders

Work hydraulics with LUDV
for sensitive, combined
movement sequences

Numerous options such
as three-point connection
in the rear, pressureless
return flow with overflow oil
connection etc.

Compact dimensions:
vehicle width and height
less than 2 m

Two vehicle heights
available (1.98 m / 2.10 m)
for better all-round visibility

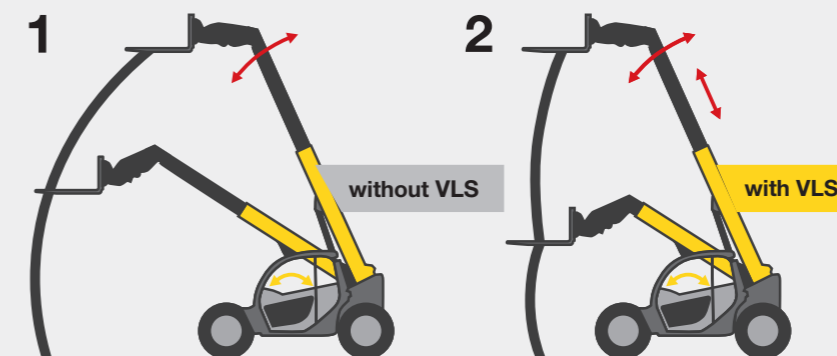
Powerful engine by Kohler
with 55.4 kW (75 hp) and
exhaust emissions stage V
(DOC + DPF)

Three types of steering
(standard): all-wheel steering,
front axle steering, crab steering

Wide range of tyre
options up to 20"

Vertical Lift System (VLS). Unique to Wacker Neuson.

Maximum payload, fully extended loading system, engine speed as far as it will go? No problem with the Vertical Lift System! The intelligent operator assistance system prevents loads from entering into the overload range - thus preventing the machine from tipping over.



1 Conventional systems (without VLS)

The machines can reach the tipping limit when simply lowering.

2 Driver assistance system VLS

Nearly vertical movement. The load's center of gravity remains even.

— Operating input
— Response of the loading system

Three steering modes.

Whether on the street or in tight driving maneuvers: the telehandlers from Wacker Neuson show what they can do in every application and, thanks to three different types of steering, make moving material a breeze.



All-wheel steering:

particularly maneuverable due
to 2x38° steering angle.



Front axle steering:

regular driving behavior, even when
driving quickly on roads.



Crab steering:

ideal for parallel travels and maneuvers in
confined spaces, e.g. when clearing out
halls.

Raised cabin for optimized all-round visibility:

low-set cabin is ideal for low clearance heights; raised cabins offer
better all-round visibility (TH522, TH627).



Many add-on options available ex works:

- Automatic bucket return
- 20 inch tyres possible
- 30-km/h high speed
- Pressure release of 3rd control circuit
- Front window protective grating
- Fully automatic central lubrication system



Excellent all-round visibility for quick work cycles, even in confined conditions

Drive efficiently to the next site with ecospeed and Smart Driving

Precise working thanks to adjustable hydraulic speed for raising and lowering of the telescopic arm and tilt-in and tilt-out of the attachment

Powerful & Versatile:
the telehandler TH745.

	TH745
Max. payload (kg)	4,500
Max. stacking height (m)	7.017
Engine output (kW)	100
Operating weight (kg)	8,100–9,100

Standard rpm reduction in ecospeed and ecospeedPRO protects operator and machine

Infinitely variable drive system for sensitive work and high thrusting force

Load stabilizer and end position damping in all cylinders

Optimal service access due to large, wide opening engine hood

Torsion-resistant frame in modular profile design with lateral support for the telescopic arm (TH744, TH955)

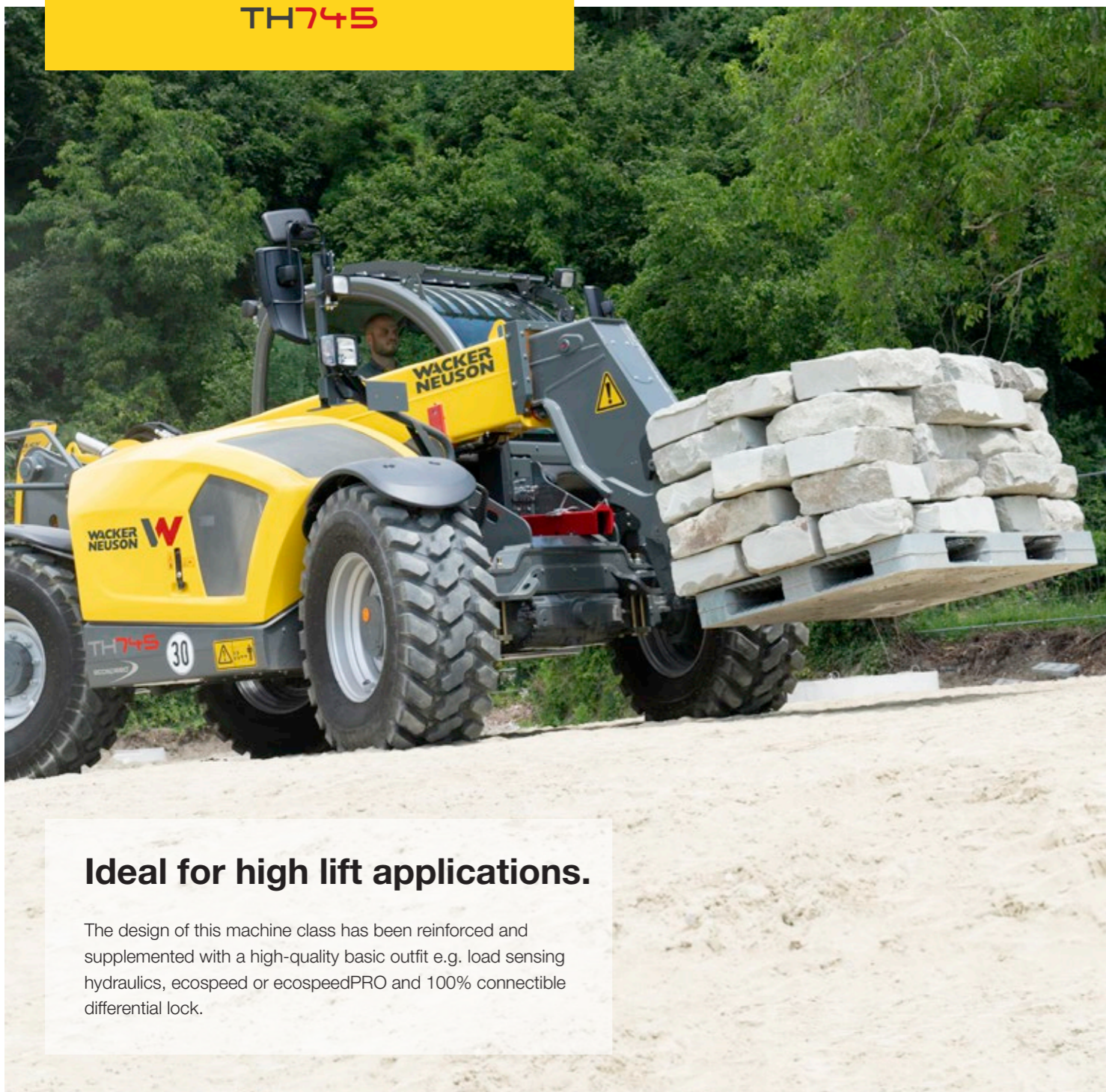
Higher productivity and safety due to the Vertical Lift System (VLS)

Quick attachment replacement, thanks to the massive quick hitch plate with four connecting points each with 50 mm diameter

7" LCD display, all-in-one joystick and Jog Dial for comfortable machine operation

Maximum durability due to heavy duty axles

TH745



Ideal for high lift applications.

The design of this machine class has been reinforced and supplemented with a high-quality basic outfit e.g. load sensing hydraulics, ecospeed or ecospeedPRO and 100% connectible differential lock.

Controlled speed, power & fuel efficiency.

The innovative high-speed gearboxes ecospeed and ecospeedPRO combine the sensitivity of a hydrostatic drive system with the increased tractive and thrusting forces of a variable transmission system. They allow a consistent acceleration from 0 to 40 km/h without shifting. Thus, they continuously optimize the interplay of drive performance, tractive force, fuel consumption and emission values.

ecospeedPRO is another development specifically for larger machines. With a volumetric displacement that is 39% larger, it achieves even higher tractive and thrusting forces, especially at low travel speeds, but remains as compact, energy-efficient and comfortable.

Models with ecospeed: TH745



Ergonomic working area.

The telehandler cabins offer high level of comfort and are designed ergonomically. The ergonomically shaped joystick console is located directly on the individually adjustable comfort seat. 16 functions can be operated quickly and intuitively with this – for efficient, less tiring work, even for hours.



Three steering modes as standard.

Whether on the street or in tight driving maneuvers: the telehandlers from Wacker Neuson show what they can do in every application and, thanks to three different types of steering, make moving material a breeze.



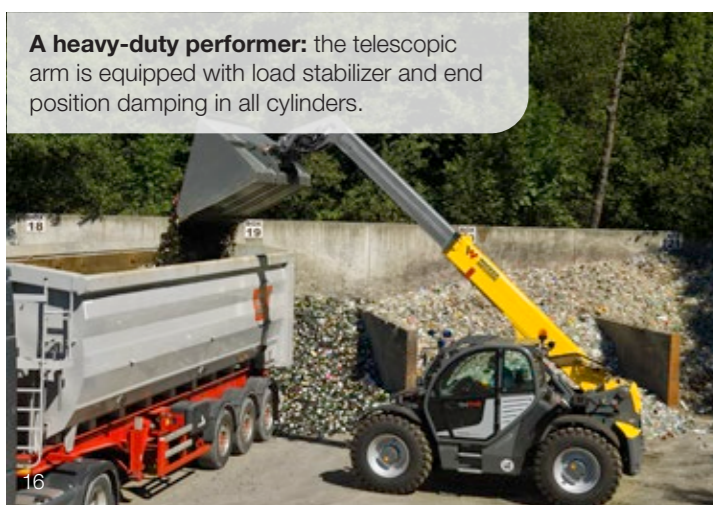
All-wheel steering: particularly maneuverable due to 2x38° steering angle.



Front axle steering: regular driving behavior, even when driving quickly on roads.



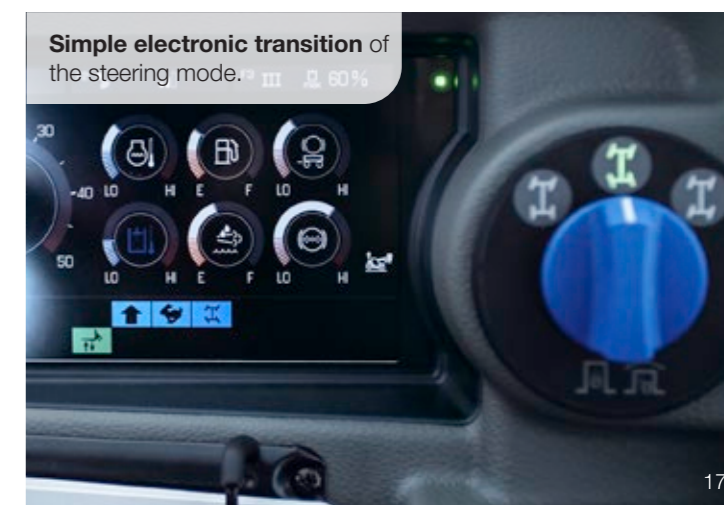
Crab steering: ideal for parallel travels and maneuvers in confined spaces, e.g. when clearing out halls.



A heavy-duty performer: the telescopic arm is equipped with load stabilizer and end position damping in all cylinders.



Heavy material handling and quick work cycles due to the high-performance hydraulic system.

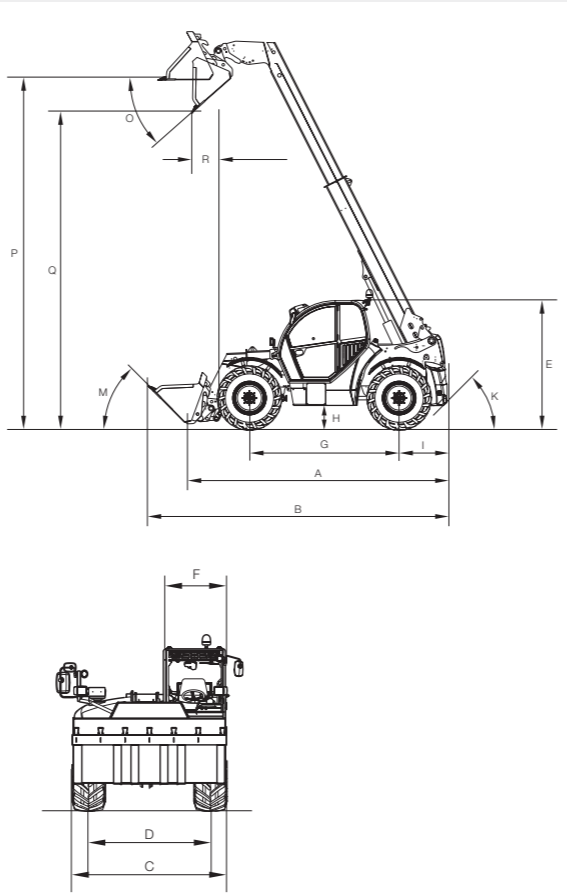


Simple electronic transition of the steering mode.

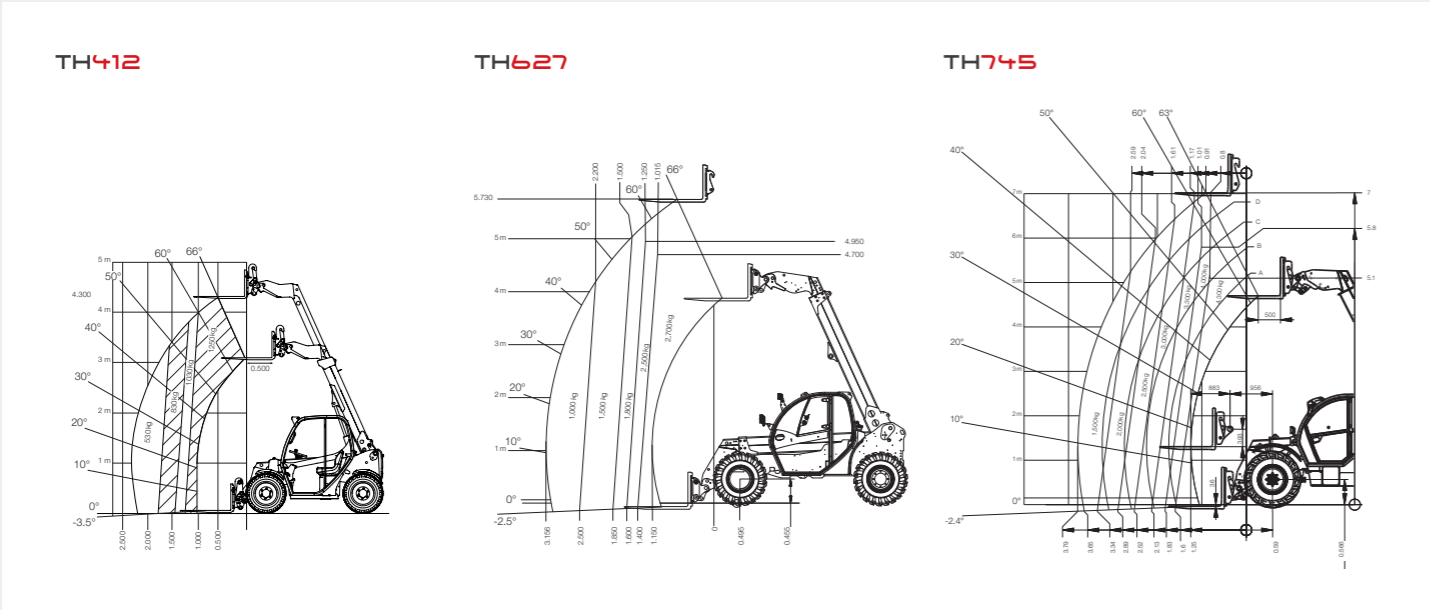
Dimensions

TELEHANDLERS

		TH412TH627TH745			
DIMENSIONS		UNIT			
A	Length, including attachment frame	mm	2,977	4,400	4,985
B	Length with standard bucket	mm	3,944	5,000	6,160
C	Width with standard tires	mm	1,564	1,960	2,500
D	Track width	mm	1,235	1,650	1,995
E	Height to the cab roof	mm	1,995	1,985 (2,105 optional)	2,570
F	Width of the cabin	mm	702	825	990
G	Wheel base	mm	1,922	2,650	2,950
H	Ground clearance	mm	294	300	418
I	Distance from center of rear wheel to the rear end	mm	427	620	950
K	Rear approach angle	°	32	76	36.5
M	Loading angle (bucket)	°	44	45	45
O	Dumping angle (bucket)	°	36	22 (40 optional)	41
P	Overhead loading height with standard bucket	mm	4,163	5,570	6,835
Q	Dumping height	mm	3,566	5,005	6,183
R	Dump reach with standard bucket	mm	476	680	495



Payload diagram



Technical data

TELEHANDLERS

		TH412TH627TH745		
OPERATIONAL DATA		UNIT		
Max. payload (LSP* 500 mm)	kg	1,250	2,700	4,500
Max. stacking height	mm	4,301	5,790	7,017
Operating weight	kg	2,750 (2,900)	4,200 (5,000)	8,100–9,100
Turning radius over tires	mm	2,695	3,670	3,755
ENGINE		UNIT		
Manufacturer	–	Yanmar	Kohler	Deutz
Performance	kW/hp	18.4/25 (33.3/45 optional)	55/74	100/136
Displacement	cm³	1,266 (1,568)	2,482	3,621
Exhaust emissions stage	–	V	V	V
Noise emissions at the operator's ear	dB (A)	85	72	72
Exhaust after-treatment	–	DOC + DPF	DOC + DPF	DOC + DPF + SCR
POWER TRANSMISSION		UNIT		
Drive system	–	Hydrostatic via universal joint shaft, electr. regulated	Hydrostatic via universal joint shaft	Hydrostatic transmission with 45° large angle engine technology
Speed	km/h	0–20 (30 optional)	0–20 (30 optional)	0–20 (0–30/0–40 optional)
Axles	–	Planetary-steering drive axle	Planetary-steering drive axle	Planetary-steering drive axle
Total swing angle	°	14	20	20
WORK HYDRAULICS		UNIT		
Work pump	–	Gear pump	Gear pump	Load Sensing
Discharge volume	l/min	28.6 (41.6-70 optional)	89	140
Pressure	Bar	220	260	260
KINEMATICS		UNIT		
Bucket capacity	m³	0.45	0.85	1.2–3.0
Total swing angle of attachment carrier	°	148	132 (150 optional)	152
Payload at max. stacking height	kg	1,250	1,800	3,300
Payload at max. reach	kg	530	1,000	1,500
Stacking height at max. load	mm	4,301	4,700	5,100
Reach at maximum load	mm	1,040	1,400	1,600
Max. reach	mm	2,290	3,156	3,755
FILLING LEVELS		UNIT		
Fuel tank	l	33	95	180
Hydraulic oil tank	l	36	100	100

* Peak load

The data shown refer to the standard equipment. Data may vary depending on selection of further options. Errors and omissions are reserved.

We retain the right to make changes without prior notice. No liability is assumed for the accuracy of this information. The provisions of the contractual agreement are binding.

The product range of Wacker Neuson includes over 300 different product groups with different versions – resulting from different voltage and frequency conditions, local regulations, market conditions and application conditions. Not all Wacker Neuson products listed or shown here can therefore be delivered or approved in all countries. Changes are reserved in the interest of continuous product development. Wacker Neuson accepts no liability for the accuracy and completeness of the information in this brochure. Reproduction only with the written approval of Wacker Neuson.

© Wacker Neuson Vertrieb Europa GmbH & Co.KG.

All rights reserved.

Your workday is always full of challenges. we have the right solutions to help you stay ahead of the competition. We offer everything required to complete your construction project:

Wacker Neuson – all it takes!

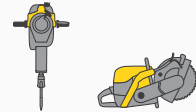
Products



Concrete technology



Compaction



Demolition technology



Excavators



Wheel loaders



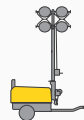
Telehandlers



Dumpers



Generators



Lighting



Pumps



Used equipment

www.wackerneuson.com

Services



Financial solutions
Uncomplicated, transparent and individual financing options for you.



Repair & maintenance
Excellent and fast maintenance. Repairs with original spare parts.



Academy
We expand your know-how: practice-oriented and within an ideal learning environment.



EquipCare
Everything about the machines at a glance, via app or PC – EquipCare.



Concrete specialists
Our specialists advise you in all project stages.



Spare parts

Every minute counts:
Within the shortest period of time, we deliver over 150,000 genuine Wacker Neuson spare parts to your construction site.