



**WACKER
NEUSON**
all it takes!

Mini-excavator

up to 6 tons





EQUIPMENT RUNNING. BUSINESS ON THE MOVE.

Invest in the future.

Set your sights on high-quality construction machines and equipment with Wacker Neuson, on which you can rely for decades - with a consistently high resale value. With over 175 years' history, we are building on a strong foundation and are proud of innovations, which have revolutionized the entire industry. Innovation is in our DNA – benefit from this and prepare for the future.



Wacker Neuson – All it takes!
Experience more:
[wackerneuson.com](https://www.wackerneuson.com)

Rely on a partnership, very close to you.

Our global network of sales and service stations makes Wacker Neuson a partner with whom you can collaborate on equal footing on site. We are here to listen to you, to understand you, and to solve your problems together with you. Set your sights on having a strong partner at your side, who will help you to position yourself ahead of the competition.

Bring even more efficiency to your construction site!

Wacker Neuson ensures maximization in productivity and minimization in costs – with high-quality products, reliable solutions and support, which guaranteeing smooth construction site operation.

Contents.

Tracked conventional tail excavators

ET08	4
ET16	12
ET18	26
ET20	26
ET25	26
ET35	40
ET42	46

Tracked Zero Tail excavators

EZ10e	8
EZ17e	16
EZ26e	32
EZ26	36
EZ36	40
EZ50	46

Attachments	52
--------------------	----

Configuration options	54
------------------------------	----

Dimensions	56
-------------------	----

Lifting power tables	58
-----------------------------	----

Technical data	66
-----------------------	----



Lightweight with high performance: the mini excavator ET08.

	ET08
Shipping weight (kg)	930–992
Digging depth (mm)	1,763
Engine output (kWh)	9.9

ET08 tracked excavator: extending your options.



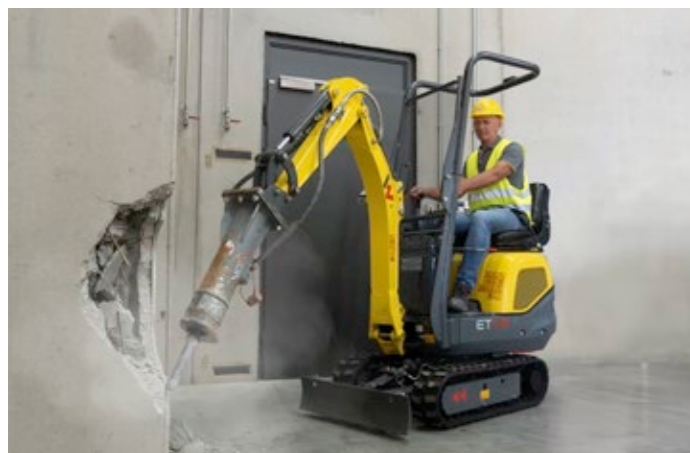
Maintenance was never this easy.

The one-sided arrangement of the zerk fittings and the easy accessibility of all service and maintenance points mean valuable time is saved here. Daily work tasks can be completed quickly and efficiently.



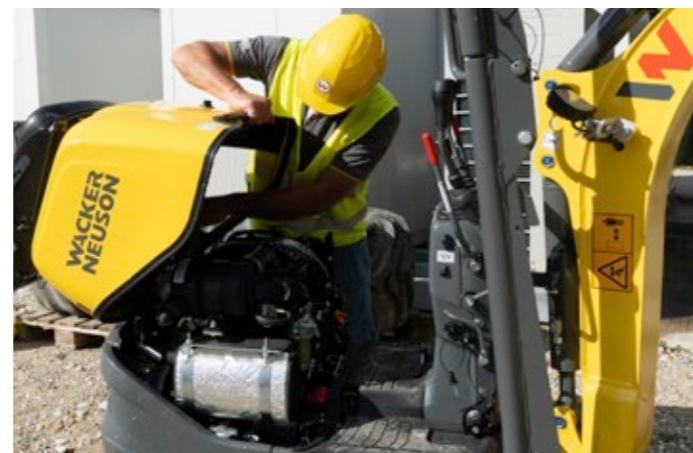
Fold-down ROPS safety bar.

The Roll-Over-Protection-Structure (ROPS) serves as protection for the operator. For low clearance heights or for easier transportation of the machine, the ROPS safety bar can be easily folded down.



Auxiliary hydraulics as standard.

The standard one-way auxiliary hydraulics enables, for example, breaker operation and therefore provides more flexibility. Optionally, it can be converted to two-way auxiliary hydraulics. Demolition and renovation works in confined spaces are therefore no problem.



The highest engine performance in its class.

Power and engine performance in professional class: the proven 3-cylinder diesel engine is an efficient, economical, and reliable powerhouse.

Safety

- Shatter protection (optional)
- Fold-down ROPS safety bar
- Lift arm cylinder on the top side of the boom, protected against damage

Performance

- Auxiliary hydraulics as standard (optional 2-circuit auxiliary hydraulics available)
- The highest engine performance in its class
- Hydraulic oil tank on the outside, due to which the oil heats up less without an additional cooler – for full performance at high ambient temperatures

Maintenance

- One-sided arranged zerk fittings
- Easy accessibility to all maintenance points
- Foldable engine hood for optimum access

Efficiency & versatility

- Easy transport with a car trailer
- Hydraulic telescopic travel gear with dozer blade extension
- Compact dimensions
- Thermal resistance at ambient temperatures up to 45°C





Compact, powerful, electric:
a lot of power within the tightest spaces
with the EZ10e.

	EZ10e
Shipping weight (kg)	1,100 – 1,200
Max. digging depth (mm)	1,521
Battery capacity (optional) (kWh)	10 (14)

Compact power for sustainability: unrestricted and without emissions in the tightest spaces.



Developed for all-day use.

Shorter charging times and long running times, as well as the option for parallel operation, while charging at a socket - the EZ10e has been developed for use throughout an entire working day. As a result of this, it is characterized by high performance and maximum efficiency.



100% emission-free and quiet in operation.

The electric drive makes it possible to operate in a variety of additional areas of application, like noise-sensitive areas, areas subject to environmental protection, and even working at night or indoors. As a result of the omission of many service and maintenance points, regular costs are reduced to a minimum.



Hydraulic telescopic travel gear with dozer blade extension.

The hydraulic telescopic travel gear can be quickly and easily retracted, making it possible to clear passageways of 790 mm. With an extended travel gear to 1,100 mm, the EZ10e works with greater stability in confined spaces. With the fold-in dozer blade, this makes individual adjustment to the job site conditions possible.



Clearly increased operator comfort.

The daily work becomes comfortable work with the joystick operation, premium seat, and great deal of legroom. Adjustable armrests and operator's seat enable adaptation to the individual requirements of the operator.

Efficiency & comfort

- Powerful drive system with load-sensing hydraulic system (LUDV)
- Fold-down ROPS bar ideal for transportation and thoroughfares
- Minimal energy costs due to fully electric drive system
- 100% Zero Tail: no rear projection
- High operator comfort
- AWS (Active Working Signal) indicates to the environment that the machine is in operation

Performance & maintenance

- High performance like a conventional machine
- Minimal service, maintenance costs, and effort
- High hydraulic performance
- Swivel console for tight areas and working against walls and obstacles

Versatility

- Many charging options and stationary network operation possible via integrated chargers
- Fully charged in 1.5 to 4 hours at a high-voltage outlet
- Hydraulic telescopic travel gear with dozer blade extension
- Extended applications options as a result of the electric drive

Environmental friendliness

- 100% emission-free
- Low noise emissions





**Moving large items in
a small space:**
the compact mini-excavator ET16.

	ET16
Shipping weight (kg)	1,402–1,602
Digging depth with short and long dipper stick (mm)	2,242–2,413
Engine output (kWh)	13.8

ET16 tracked excavator: characterized by its compact and sturdy design.



Powerful drive system with LUDV (load-sensing hydraulic system).

The powerful drive system in combination with a load-sensing hydraulic system (LUDV) makes controlling the excavator comfortable and fatigue-free. Irrespective of the load to be moved, the control movements on the joystick stay the same.

Hydraulic telescopic travel gear with dozer blade extension.

The hydraulic telescopic travel gear – with a max. external width of 1,300 mm – provides stability. It can be retracted to a width of 990 mm. With the foldable dozer blade extension, this makes individual adjustment to the job site conditions possible.



Large, ergonomic comfort cabin.

The ergonomically optimized comfort cab provides a very good 360° visibility, plenty of legroom and headroom, and a wide entry. The two-piece front windshield also ensures optimal ventilation in any type of weather. This guarantees a high level of safety and flexibility within the workspace, adapted to the individual requirements of the operator.

Easy transport with a car trailer.

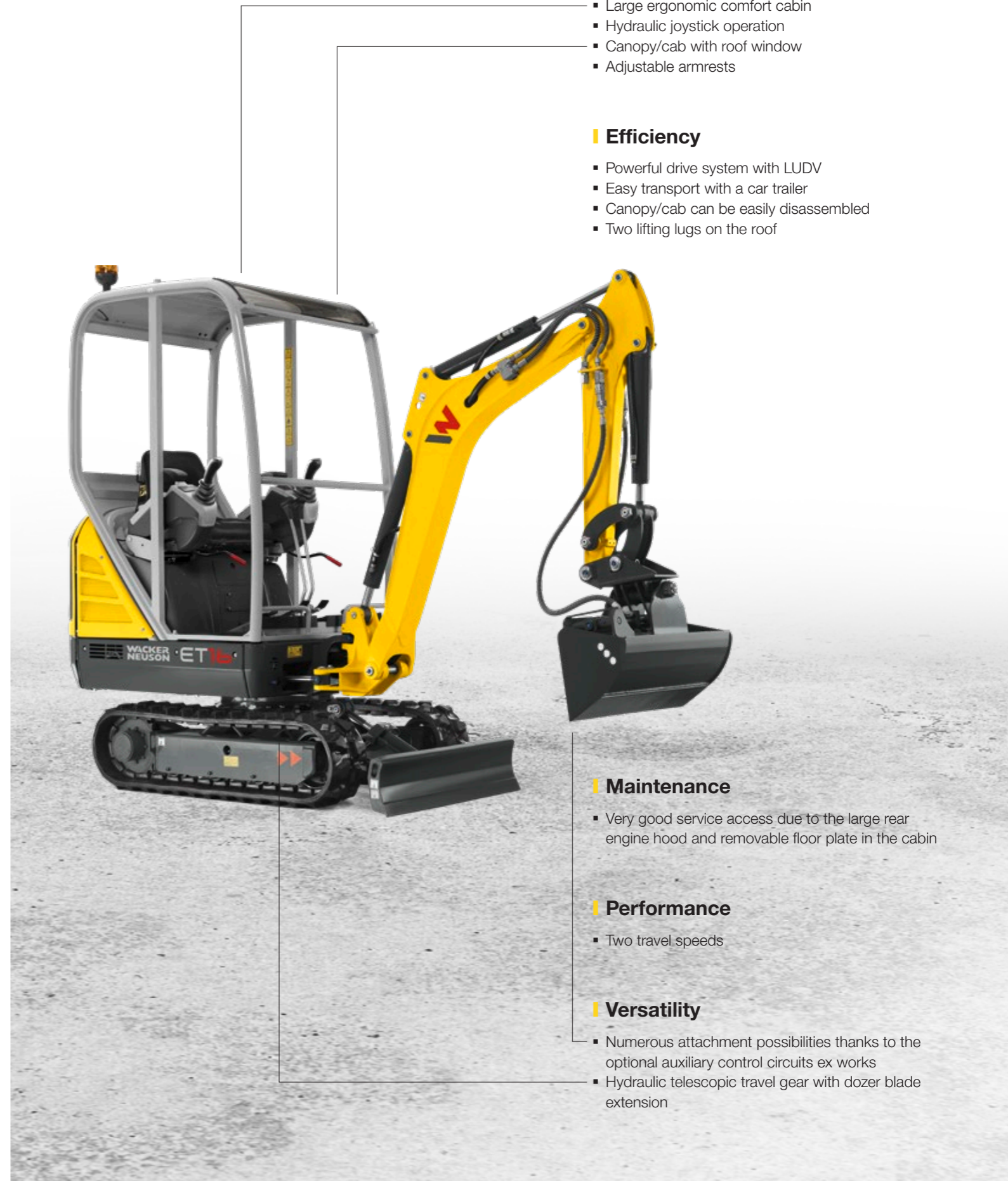
Going to the next construction site with the car trailer? No problem. The low weight of the ET16 enables transportation incl. attachment on a 3.5t trailer.

Comfort

- Large ergonomic comfort cabin
- Hydraulic joystick operation
- Canopy/cab with roof window
- Adjustable armrests

Efficiency

- Powerful drive system with LUDV
- Easy transport with a car trailer
- Canopy/cab can be easily disassembled
- Two lifting lugs on the roof



Maintenance

- Very good service access due to the large rear engine hood and removable floor plate in the cabin

Performance

- Two travel speeds

Versatility

- Numerous attachment possibilities thanks to the optional auxiliary control circuits ex works
- Hydraulic telescopic travel gear with dozer blade extension



Fully electric and full performance:
the electric Zero Tail mini-excavator EZ17e.

	EZ17e
Shipping weight (kg)	1,681–1,860
Digging depth with short and long dipper stick (mm)	2,323/2,483
Battery output (kWh)	23.4

Emission-free and versatile.

An overview of all the EZ17e's features.

Efficiency

- Powerful drive system with load-sensing hydraulic system (LUDV)
- Canopy can be easily disassembled
- Minimal energy costs due to fully electric drive system
- 100% Zero Tail: no rear projection

Performance

- Patented battery technology: performance for a full workday
- Flexible energy supply: possible to perform stationary work during loading procedure
- Automatic battery heating ensures complete readiness, even at low temperatures
- Same hydraulic output as with a diesel model

Maintenance

- Reduced maintenance and service costs
- Maintenance-free lithium-ion battery
- Significantly lower operating costs



Comfort

- 2-point lifting via canopy
- LED work lights
- Large 7-inch full color display
- Intuitive operating concept: joystick, display, Jog Dial, and keypad

Safety & environmental friendliness

- No exhaust emissions
- Clearly less noise
- 100% emission-free work protects the operator and the machine's surroundings

Versatility

- Up to four auxiliary control circuits ex works
- Possible to charge via power current or 230 Volt connection using integrated chargers
- Fully charged in four hours at a high-voltage outlet
- Hydraulic telescopic travel gear with dozer blade extension

Zero Tail excavator EZ17e: electric mini-excavator without rear projection.



Patented battery technology.

The EZ17e scores points with a long battery life thanks to a battery capacity of 23.4 kWh and the patented, maintenance-free battery system. The modern lithium-ion battery with integrated heater enables fast charging, even with a low ambient temperature and

provides power for a whole workday. In doing so, application both in battery mode and, where required, in the stationary network operation is possible with the same hydraulic output as with its diesel-operated counterpart.

No exhaust emissions, clearly less noise.

The operator is not exposed to exhaust emissions and is exposed to clearly less noise. As a result, the EZ17e is particularly well-suited for use in sensitive areas. Work is more comfortable for both the operator and his environment, than with fuel-operated equipment.

Large 7-inch full color display.

All the important information surrounding the battery status and the operation are clearly presented on the 7-inch full-color display. Together with the modern Jog Dial operating system, the EZ17e sets new standards within its class.



Reduced maintenance and service costs.

Thanks to the maintenance-free battery, the service-effort is reduced to a minimum. Likewise, typical maintenance-works of conventional machines, such as engine oil and filter changes are no

longer necessary, and as a result you save on the service material costs. With this, the battery has a particularly long service life and is reliable.

100% practice-oriented.

Numerous features support the daily operation of the machine and ensure smooth procedures: a removable canopy for quick clearance in thoroughfares adjustable charging current limitation for restless fuses, and the continuously displayed calculation of the remaining working time enable the highest level of construction-site productivity.

100% Zero Tail.

Sometimes less is more, especially in tight spaces. The EZ17e does not have a rear projection and is ideally suited to working directly alongside walls and boundaries. This is possible because all of the components are housed within the installation space, from the battery through the electric motor to the chargers.



Compact, powerful, maneuverable:
the Zero Tail mini-excavator EZ17.

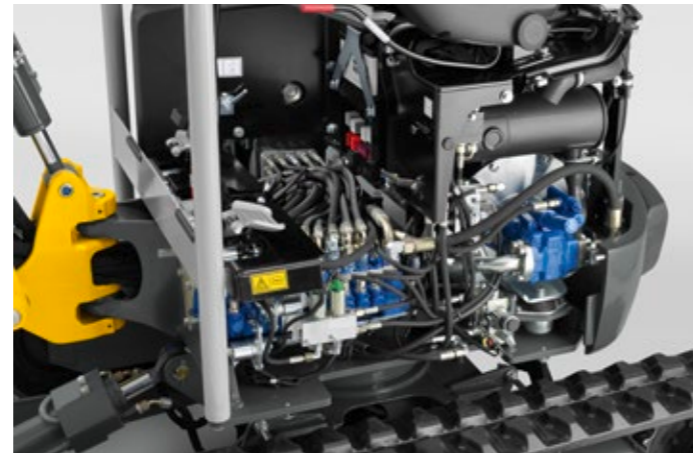
	EZ17
Shipping weight (kg)	1,595–1,822
Digging depth with short and long dipper stick (mm)	2,326–2,486
Engine output (kWh)	13.8

Zero Tail excavator EZ17: high performance and efficiency.



Optimally protected stick and lifting arm cylinders.

The neck and lifting arm cylinder are attached to the upper side. As a result of this, they cannot be damaged either by a collision with the dozer blade, or with the material received. Therefore, less damage occurs, which in turn saves in cost.



Maintenance and disassembly easier than ever before.

The EZ17 is superbly practice-oriented. With a 17 mm wrench, the most important components can be disassembled on the construction site. All of the relevant components can be conveniently removed, easily reached and checked.



Powerful drive system with LUDV.

Thanks to the LUDV, the control movements on the joystick remain the same, independent of the load to be moved. Along with increased operating comfort, this results in a performance plus while simultaneously reducing consumption.



Hydraulic joystick operation.

The ergonomic and sturdy joysticks, which work completely proportionally, expand the functions and possibilities for controlling the excavator. The operator can carry out movements more precisely and work with increased concentration.



Versatility

- Two lifting lugs on the roof
- Up to four auxiliary control circuits for easy operation of attachments
- Load-holding function and optional overload valves with hose burst protection
- Telescopic travel gear and dozer blade extension for optimal maneuverability in confined spaces

Safety

- Optimally protected stick and lifting arm cylinders

Performance

- Two travel speeds
- Hydraulic joystick operation
- Best stability and solid steel construction

Maintenance

- Very easy maintenance and disassembly of the canopy and covers (everything with one key)

Efficiency

- Easy transport with a car trailer
- 100% Zero Tail: no rear projection
- Thermal resistance at ambient temperatures up to 45°C
- Powerful drive system with LUDV



More application areas. Greater productivity.

Tracked excavators ET18, ET20, and ET25.

	ET18	ET20	ET25
Shipping weight (kg)	1,780–2,160	1,840–2,180	2,195–2,560
Digging depth with short and long dipper stick (mm)	2,410/2,570	2,543/2,703	2,522/2,722
Engine output (kW)	14.6	14.6	14.6

Expect more, get more: three models, numerous possibilities.

An overview of all the ET18, ET20, and ET25's features.

Comfort

- Comfortable, fully glazed operator cab with skylight for an optimal view upwards
- Innovative front windshield system, allowing ventilation and preventing loss and damage
- Hydraulically controlled drive pedals for comfortable, precise control
- Hydraulic joystick operation with Jog Dial operating system
- Easy to disassemble canopy/cabin
- Air-conditioning system for continuously pleasant working climate
- Drink holders, storage areas, and armrests for additional operating comfort
- USB port and cellphone holder
- Flexible cylinder rod protection protects against damage and increases service life

Safety

- Optionally available with a security screen
- High stability even with challenging loads
- Orange safety belt in connection with green rotating beacon
- Handle for entry in signal color

Maintenance & longevity

- Easy service and maintenance access saves time and cost
- Auto idling system and Auto-Stop function
- High thermal resistance: 100% performance up to 45° ambient temperature



Versatility

- Hydraulic telescopic travel gear with dozer blade extension
- Numerous attachments and up to five auxiliary control circuits ex works
- Control circuits AUX II & AUX III (H2 & H3) can be operated in parallel
- Lifting lugs on the cabin roof
- Vertical Digging System (VDS)
- Easily removable cabin

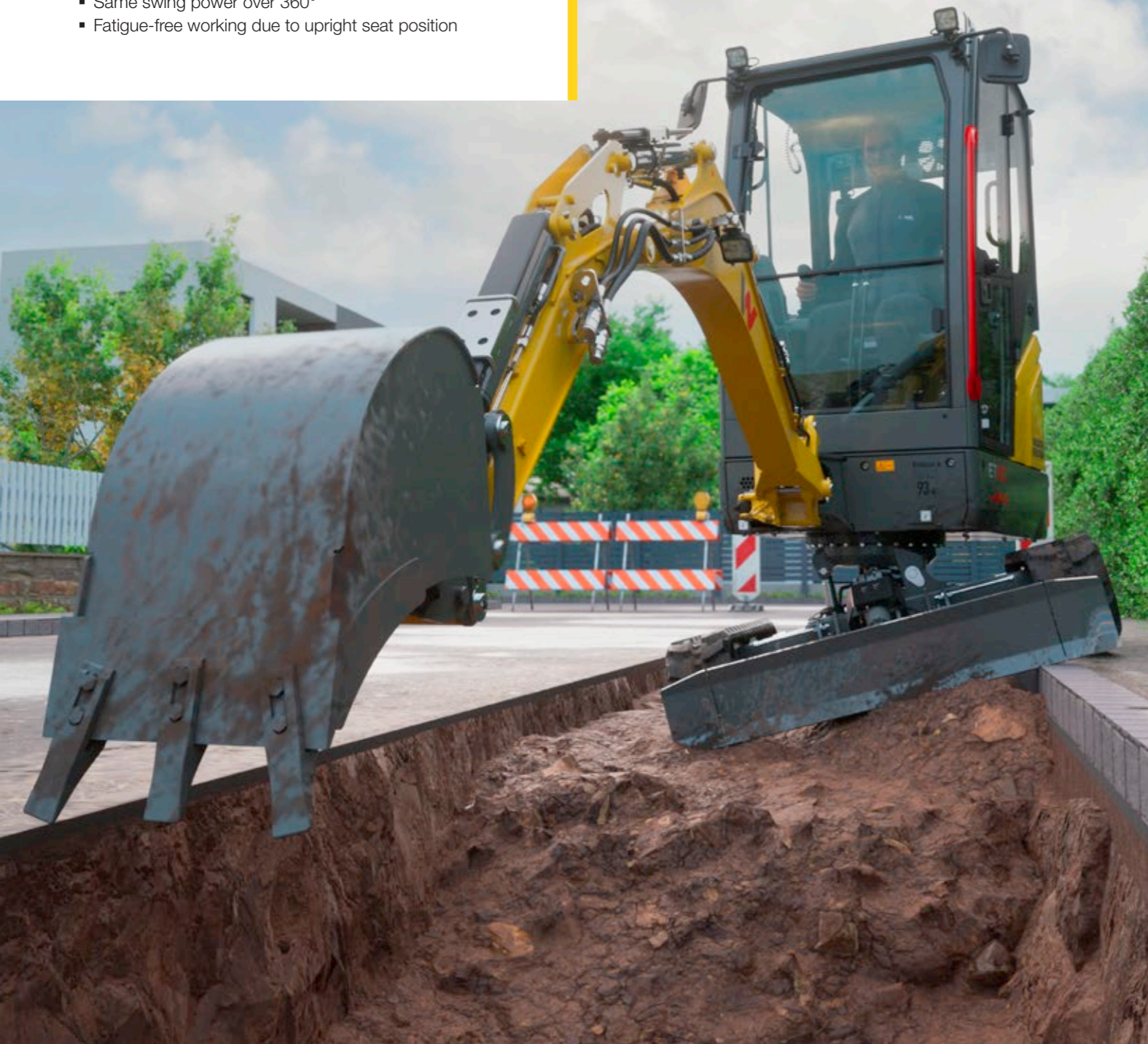
Efficiency & performance

- High-output drive system for more performance
- Compact dimensions for narrow and low entrances
- Easy transport with a car trailer
- Single-pump hydraulic system for tangible increase in performance
- Pressure release for auxiliary control circuits H1, H2 and H3
- Impressive excavation specifications

VDS Vertical Digging System – small detail, great effect

The Vertical Digging System compensates inclines from up to 15 degrees, thus making vertical trenches on a slopes possible. This is not only ergonomic for the operator, but it also saves on both time and excavated material.

- Up to 25 percent material and time savings when excavating and filling
- Safe working and higher stability in sloping spaces
- Same swing power over 360°
- Fatigue-free working due to upright seat position



Tracked excavators ET18, ET20, and ET25. More power. More control. More fun.



Two tools, one flow.

In parallel use of AUX II & AUX III (H2 & H3), Powertilt and grapple can, for example, be operated alternately using the switchover button. This means more precise movements and tangibly more productivity in gardening and landscaping, connection, and municipal operations. A real unique selling point in this class.



More performance at the push of a button.

The load-sensing hydraulics deliver constant output – no matter what load. Movements remain sensitive, quick, and controlled, even with challenging work tasks with attachments.



Drive into narrow spaces, work in stability.

The standard telescopic travel gear flexibly adjusts the width of the machine: narrow for thoroughfares, wide for maximum stability. Perfect for narrow access points and safe applications on site. Depending on the machine, the travel gear can be set between 990 and 1,500 mm.



Comfort that creates productivity.

All functions are conveniently controlled via joysticks – without additional pedals. Auto-Idle reduces engine speed and noise automatically. This makes it easy on the machine, operator, and nerves – the whole workday long. Due to the optional air-conditioning system, the operator enjoys a perfect climate.



Energy-charged power package: electrified everyday work with the EZ26e.

	EZ26e
Shipping weight (kg)	< 2,700
Max. digging depth (mm)	2,803
Battery capacity (optional) (kWh)	30 (39)

Strong, safe, compact:
no wish left ungranted for the operator or the environment.



100% emission-free and still powerful.

EZ26e is ideal for working in sensitive environments, like residential areas, parks, or indoor spaces, as it releases no dangerous exhausts gases and has minimal noise emissions. As a result of this, a comfortable working environment is promoted, which protects the environment and makes it easier to use the machine in areas with strict environmental regulations.



Compact design and low weight.

As a result of the Zero Tail projection, there is plenty of space to maneuver the machine, even in tight spaces, and to work alongside walls. The excavator's low weight makes it possible to transport it on a 3t trailer, including the attachment.



Safety is the utmost priority.

A number of safety features make the machine not only a strong partner on the construction site but also a safe one. The AWS illuminates as soon as the machine is put into operation, thus ensuring the highest degree of attention within the area. An overload warning alarm, orange safety belt and the piston rod protection are other safety features.



Optimal 360° visibility.

As a result of the compact design and the all-round glazing, as well as an ideal engine hood design, the operator is able to see all the important areas at a glance from the operator's seat. As a result of the rear-view mirror and the roof window, the rear and the area above the cabin are well visible, which can minimize the risk of accidents and material damage.

Extraordinary performance:
incomparable work enjoyment with emission-free operation.

Environmental friendliness

- Emission-free operation
- Auto-Stop function
- Automatic RPM speed control
- Very low noise level
- Bio-Oil filling available

Efficiency & comfort

- Flexible energy supply (stationary operation also possible)
- Full-graphic display and Bluetooth radio with hands-free system
- Cab heating
- Jog Dial and joystick operation
- Flexible charging options and long running time

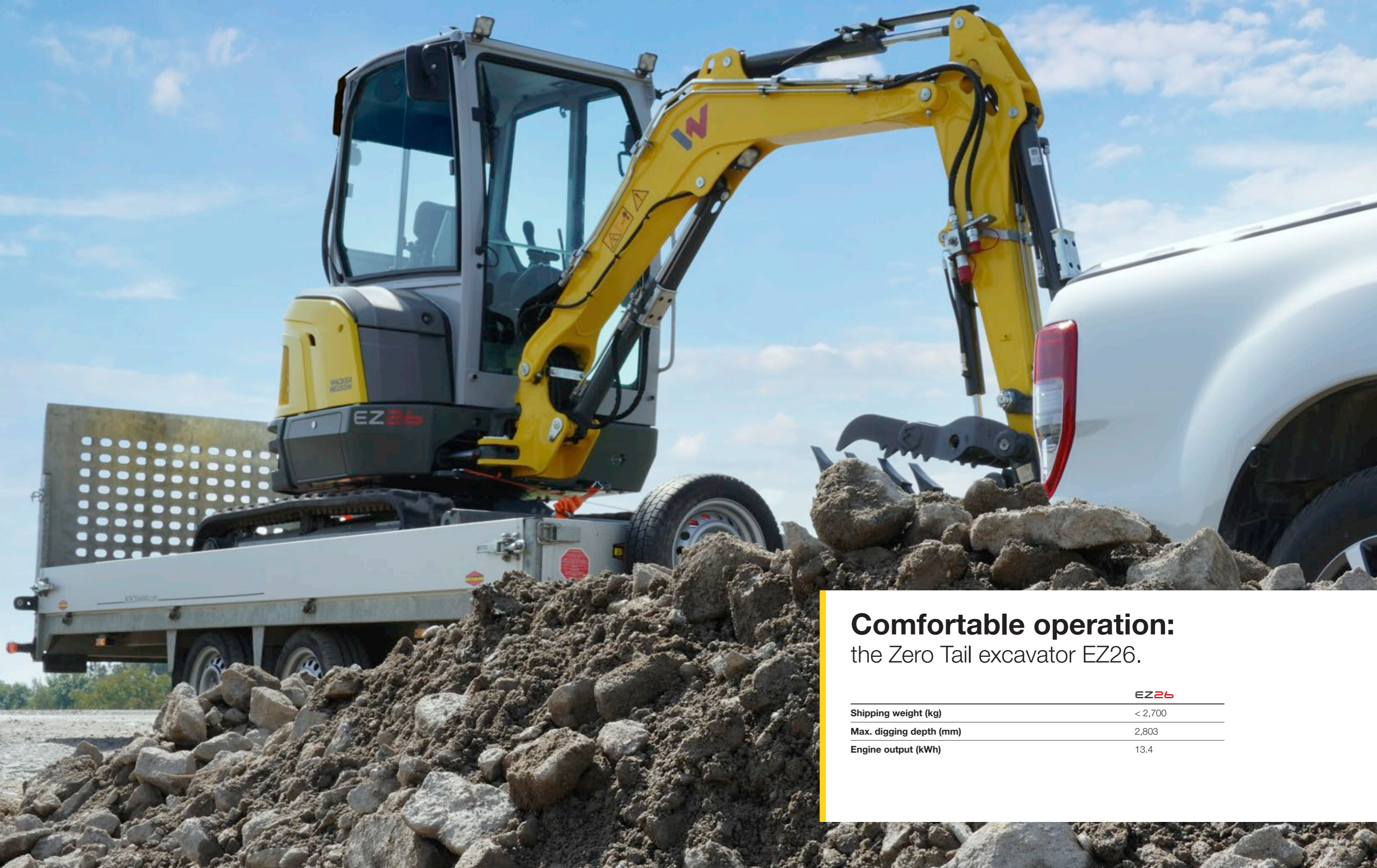
Performance, maintenance & safety

- Same high performance as a conventional machine
- Holds full charge for a whole working day
- Orange safety belt in connection with green rotating beacon
- LED work lights
- Piston rod protection
- Overload warning indicator
- Up to 3 additional control circuits
- Easy-to-reach maintenance and service points

Versatility

- Zero Tail structure
- Small dimensions
- Low weight for trailer transportation
- Extended application options





Comfortable operation: the Zero Tail excavator EZ26.

	EZ26
Shipping weight (kg)	< 2,700
Max. digging depth (mm)	2,803
Engine output (kWh)	13.4

Quality

- Optimized hose routing for longer service life and protection from the outside
- 100% power up to 45°C ambient temperature
- Flexible cylinder rod protection – no remaining deformation after contact with an obstacle

Versatility

- Two lifting points for the whole machine on the cab/canopy
- Zero Tail – no rear projection
- Up to six auxiliary control circuits ex works
- Easily removable cabin

Performance

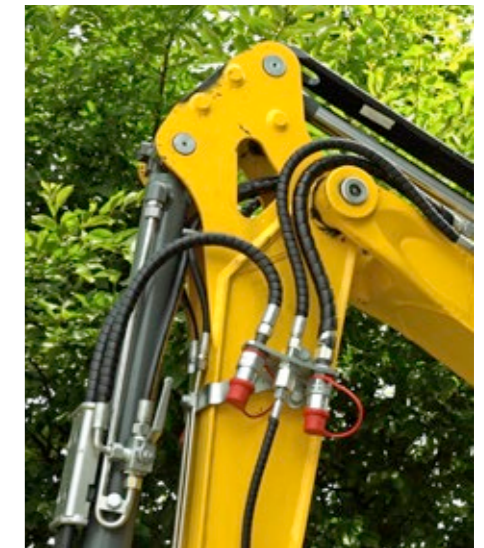
- Increased performance and digging data for working more efficiently
- LUDV hydraulic system enables easy and precise control
- Optional air-conditioning system – unique for this weight class

Efficiency

- Automatic idling speed as standard
- Easy attachment change from the cab
- Optimal access to all maintenance and service points
- The optional Auto-Stop function switches the engine off automatically after a preset time



Zero Tail excavator EZ26: maximum equipment with minimal weight.



Increased performance.

The new Zero Tail tracked excavator EZ26 provides even higher performance and digging data, and is particularly impressive with its high lifting strength.

Zero Tail.

The Zero Tail excavator with no rear projection can optimally work in confined spaces, and therefore guarantees a high degree of maneuverability and saves time.

Versatile.

The right flow for every job. Up to six auxiliary control circuits and load-sensing hydraulic system ensure precise control.



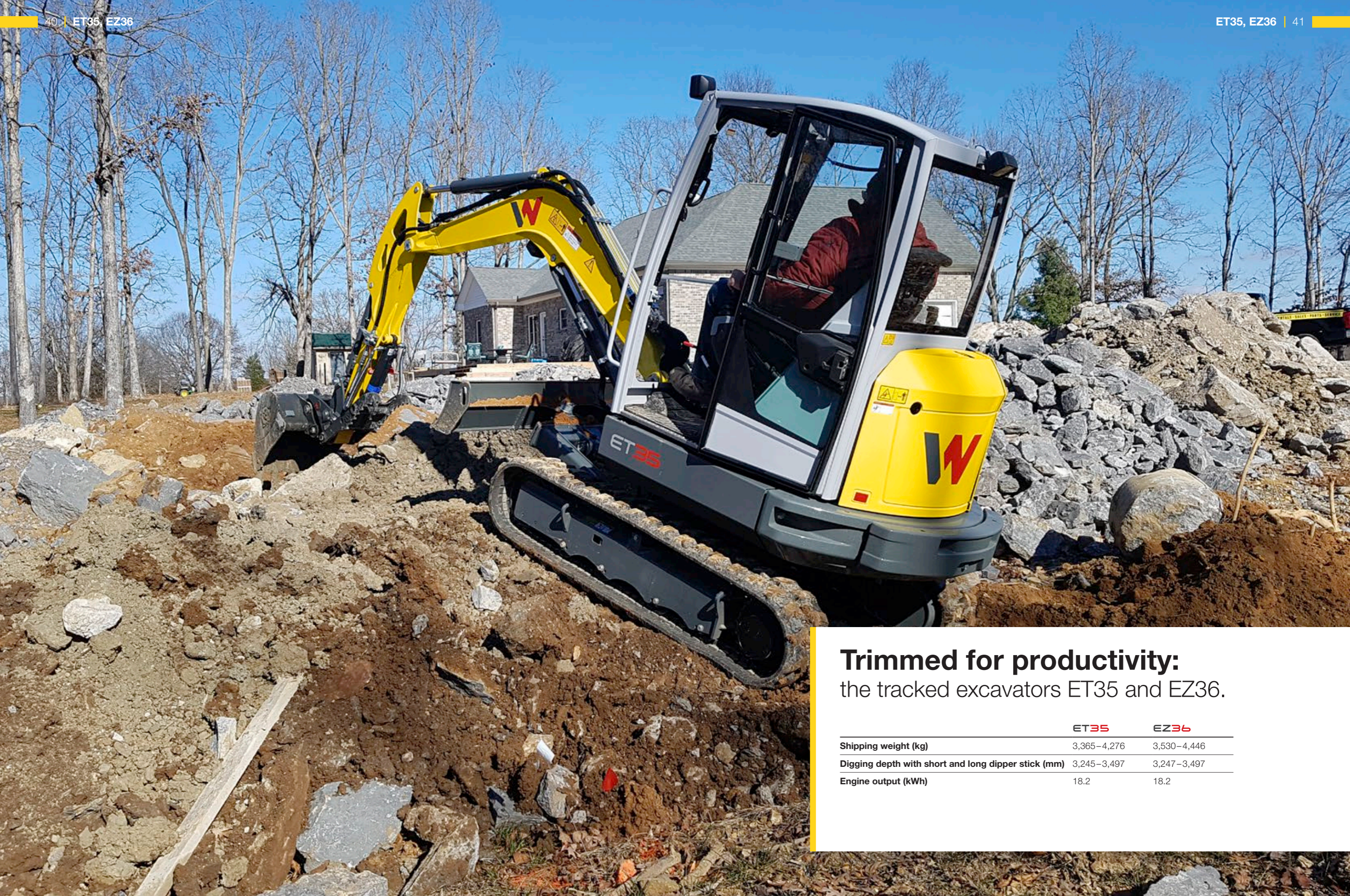
Weight and dimensions perfectly coordinated.

Small dimensions and a low weight make the EZ26 an all-rounder both on and off the construction site. The machine can be easily transported to the next construction site on a car trailer.



Comfort cab and improved line-of-sight.

Everything in view and within reach - thanks to the Jog Dial operation and clear display. The operator even has good visibility around the machine due to the improved line-of-sight. Communication is optimized through the side windows which open on both sides, as well as the two-piece front windshield.



Trimmed for productivity:
the tracked excavators ET35 and EZ36.

	ET35	EZ36
Shipping weight (kg)	3,365–4,276	3,530–4,446
Digging depth with short and long dipper stick (mm)	3,245–3,497	3,247–3,497
Engine output (kWh)	18.2	18.2

Impressive productivity.

An overview of the ET35 and EZ36 features.

Comfort

- Innovative, two-part front windshield system
- Jog Dial system
- Comfortable, fully glazed cab
- Hydraulic joystick operation
- Hydraulically controlled drive pedals
- Powerful air-conditioning system
- Radio with Bluetooth
- USB port

Efficiency

- Optimized drive concept
- Thermal resistance at ambient temperatures up to 45°C
- Zero Tail (EZ36 only)
- Transport on car trailer
- Compact dimensions
- Vertical Digging System (VDS)

Maintenance

- Easy service and maintenance access
- Tilttable and detachable cabin
- Dirt-repellent travel gear



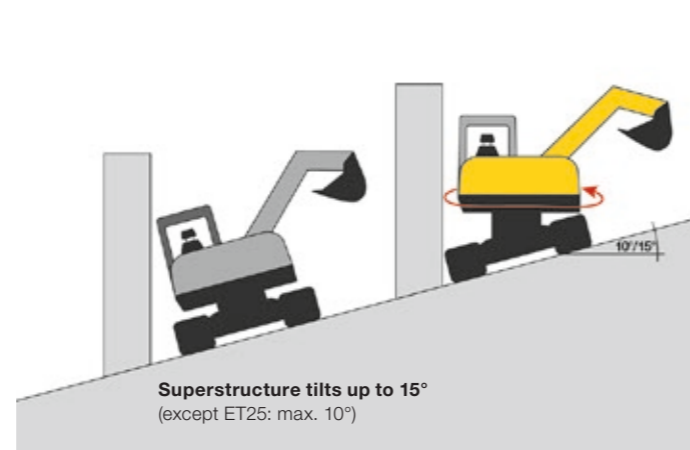
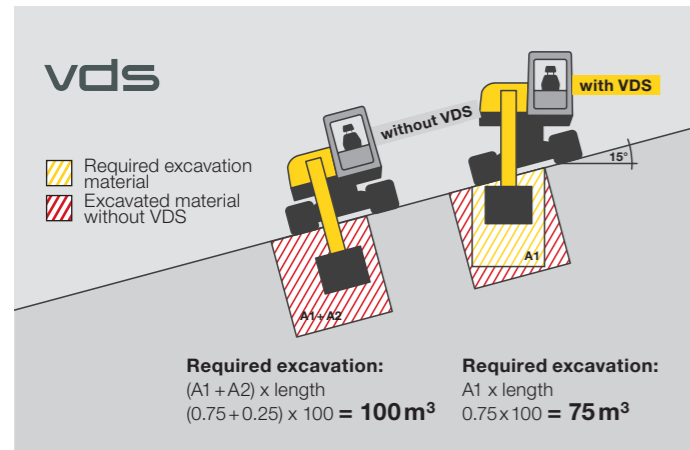
Safety

- Eight tie-downs
- Enhanced stability due to the externally guided rollers and optional additional rear weight
- Flexible cylinder rod protection

Versatility

- Up to four auxiliary control circuits ex works
- Custom-made paint finish
- Hydraulic thumb for additional gripping function (optional)
- Available with rubber or steel tracks
- Hydraulic, pivoting dozer blade with a floating position (optional)

Tracked excavators ET35 and EZ36: maximum efficiency.



Vertical Digging System – small detail, great effect.

The Vertical Digging System VDS supports you precisely then when you need it. Thanks to the VDS, you can efficiently excavate, even on inclines, like on a slope or on curbs. At the press of a button, the excavator assumes a vertical position, which enables more

precise working. You gain in productivity on uneven terrain because you save up to 25% material when excavating and filling-in.

Optimized drive concept.

The drive concept with optimized engine-pump management enables a quick and precise control. As a result, work cycles that are up to 15 percent faster can be achieved. The available engine versions are low in consumption and do not require an exhaust after-treatment.

Comfortable, fully glazed cab.

The large, fully-glazed and tiltable cab roof window offers the operator an optimal 360° visibility of their work area. This gives the operator a good view of his working area, colleagues, and any dangers.

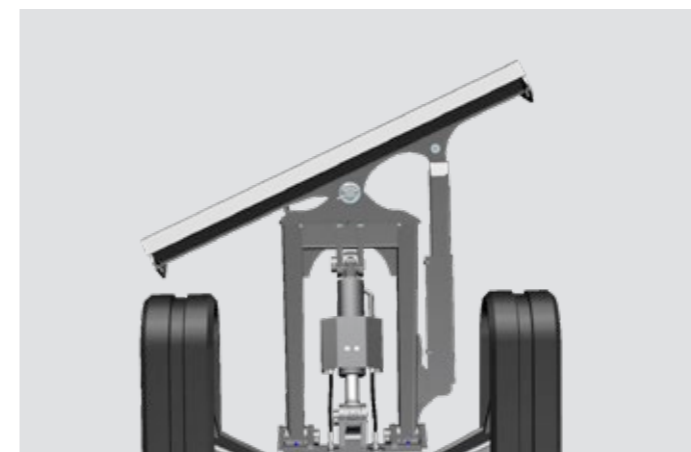


Jog Dial.

The correct operational settings can be selected using the Jog Dial. Further settings can also be selected via the keypad.

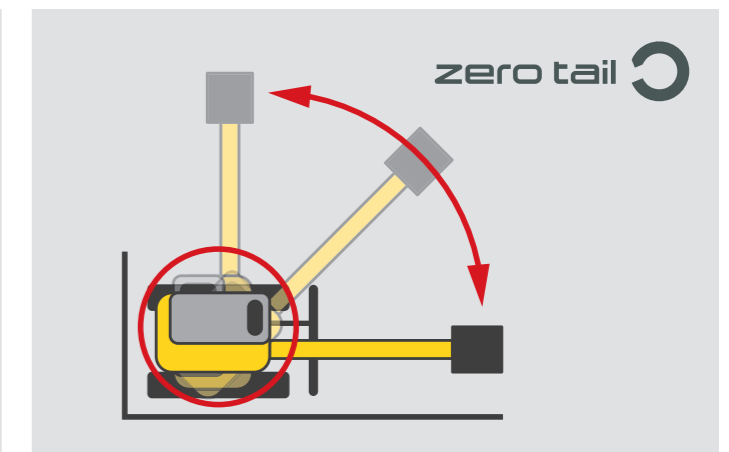
The following modes can be selected:

- ECO mode: fuel-saving work
- HI mode: maximum pump performance
- LOW mode: very precise, sensitive work



Hydraulic pivoting dozer blade.

The swivel blade can be swiveled straight or variably by up to 25 degrees to the left or the right. In the floating position, the dozer blade automatically follows the contour of the ground, so the operator does not need to make adjustments.



Zero Tail with the EZ36.

- All-around compact dimensions: ideal for working in confined spaces
- Excavator without rear projection for safe working, for example alongside walls, and for use on urban construction sites or on busy roads

The boost for your job site: the tracked excavators ET42 and EZ50.

	ET42	EZ50
Shipping weight (kg)	3,817–4,609	4,617–5,454
Digging depth with short and long dipper stick (mm)	3,344–3,544	3,467–3,667
Engine output (kW)	36	36



Excavating made easy.

An overview of the ET42 and EZ50 features.

Safety

- Active Working Signal AWS: visual warning signal for the surroundings
- LED work lights
- New positioning of the exhaust system
- Protective grating for windshield
- Ten tie-downs
- Optimal field of vision to the front as a result of the windshield washer motor integrated into the A-pillar
- Flexible cylinder rod protection

Maintenance

- Protected hose routing through the swivel console
- Optimal access to all maintenance and service points

Versatility

- Hydraulic thumb
- Innovative front windshield system
- Hydraulic swiveling dozer blade



Environmental friendliness

- Auto-Stop function: automatically switches the machine off when it is not in use (adjustable)

Comfort

- Intercommunication station
- USB port
- 7-inch display in combination with reversing camera
- High cab comfort with excellent ergonomics and air-conditioning system

Efficiency & performance

- Load Sensing Flow Sharing: precise control regardless of the load
- Vertical Digging System VDS (ET42)
- 3-point kinematics: a new level of productivity
- Compact dimensions
- Zero Tail (EZ50): working without a rear projection
- Guided track rollers outside
- Pressure release for auxiliary control circuits H1, H2 and H3

Tracked excavators ET42 and EZ50: taking your work to a new level.



Load Sensing Flow Sharing.

Load Sensing Flow Sharing enables precise and efficient control of the excavator. The machine adjusts to the load and the joystick movements are always kept the same for the operator. The hydraulics work more efficiently, saving energy and ultimately

costs. Even for the operator the operation is easier. Load-Sensing systems aid in controlling the flow rate properly. The less power is used, the lower the fuel consumption.



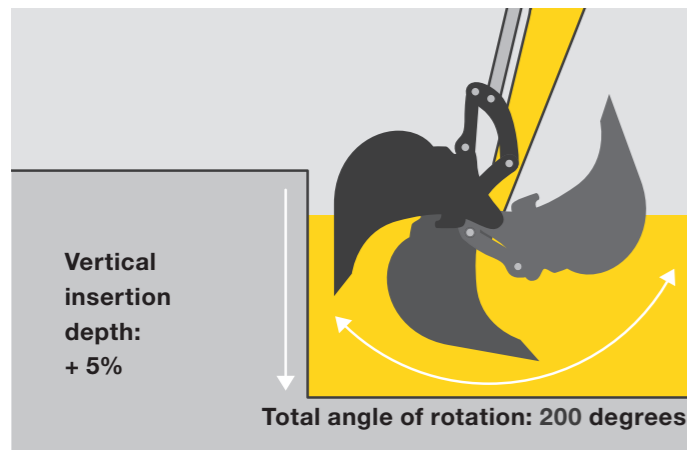
Flexible cylinder rod protection.

Due to the plastic rails, the cylinder piston rods are protected from damage, which increases their service life and saves on cost. Due to their flexible material, they return to their original shape after impact. Their appearance and characteristics are completely retained.



Active Working Signal AWS.

The red LED strip running diagonally over the engine hood lights up when the joystick control is pressed down. This signals to bystanders nearby that the excavator is ready for operation and can be moved at any time.



3-point kinematics.

With the 3-point kinematics, the usual bucket linkage has been taken to a whole new level. As a result of this "3-bolt design", the bucket's angle of rotation extends to 200 degrees - this is 10% more than a conventional bucket linkage. This increases the vertical insertion depth, as well as the digging power. It is therefore no longer necessary to reposition the excavator as often, significantly increasing efficiency.

Vertical Digging System for the ET42.

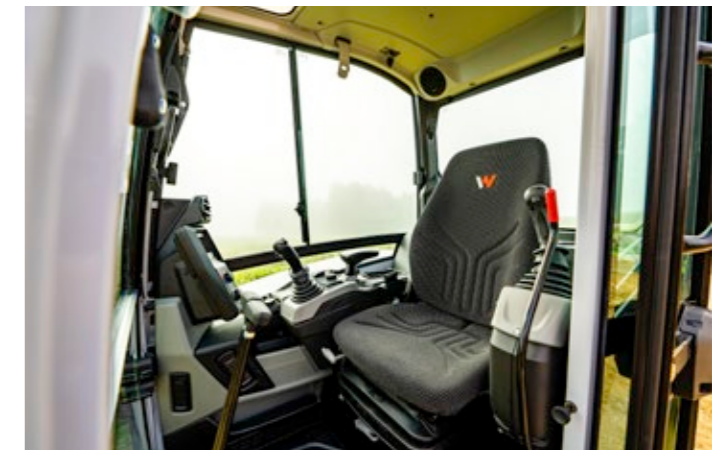
With the Vertical Digging System (VDS) option, efficiency and productivity can be increased even more at the touch of a button. For both these excavators, VDS means:

- 25% savings on materials and time when excavating and backfilling material
- Machine and entry height, as well as insertion depth, as on the models without VDS
- Full 360-degree swing power
- Fatigue-free working due to upright seat position



Versatile performer.

With up to six auxiliary control circuits and numerous new and time-tested and proven options, ET42 and EZ50 can be ideally adapted to individual requirements. Changing attachments is quick and comfortable – among other things, by a pressure release switch in the cabin and quick hitch system (optional).



Ergonomic comfort cab.

The ergonomically optimized comfort cab provides a very good 360° visibility, plenty of leg room and headroom, and a wide entry. This guarantees a high safety level and flexibility at the workplace, adjusted to the individual needs of the operator.

Attachments. Quick hitch systems.



EasyLock+.

With the hydraulic quick hitch system EasyLock+, you can change the attachment in just a few seconds with the press of a button from the operator's seat. This makes you even more flexible and productive.

In addition to normal bucket operation, the system also enables use as a face shovel. Thus, the new EasyLock+ is even safer and meets all the requirements of current standards.



Powertilt.

The Powertilt swivel unit is optionally available and can be combined with both EasyLock+ and the Lehmatic quick hitch system. This allows the attachment to be tilted by up to 90° on each side – ideal for leveling, mulching, or grading work.

Lehmatic.

With the Lehmatic quick hitch systems, you have the option to select between the mechanical and hydraulic system. The system is durable and reliable, even with hard applications. The hydraulic system is equipped with a "double lock." The Lehmatic quickhitch system is available both with and without the Powertilt.

The right machine for every application.

Bucket types.

Wacker Neuson offers you different types of bucket types for excavating, separating, transporting, and shaking off soils or other bulk materials. These are available for both EasyLock+ and Lehmatic quick hitch systems.

To be perfectly equipped for any situation from the outset, there are a number of pre-defined bucket sets ex works. You can find more information at your distributor.



Bucket with blade



Bucket with teeth



Ditch or trench cleaning bucket



Swivel bucket incl. hydraulic hoses and couplings



Hydraulic breakers.

Our range of hydraulic rammers as attachments for mini-excavators, compact excavators and mobile excavators is ideal for demolition and renovation works. The energy recovery system offers you a high level of productivity. The output directly at the breaker always remains constant and reliably high as a result of the innovative system.



Grapple.

The grapple pallet is ideally tuned to our machines and provides extensive application options from gardening and landscaping through to demolition works. Sorting & demolition grapples and multi-purpose grapples will shortly be available in different sizes ex works.

Configuration options.

Cab

	ET08	EZ10E	ET16	EZ17E	EZ17	ET18	ET20	ET25	EZ26E	EZ26	ET35	EZ36	ET42	EZ50
Canopy	-	●	●	●	●	●	●	●	●	●	●	●	●	●
FOPS protective grating level 1	-	-	○	○	○	○	○	○	-	-	-	-	-	-
Cab	-	-	○	-	-	○	○	○	○	○	○	○	○	○
Air-conditioning system	-	-	-	-	-	○	○	○	○	○	○	○	○	○
Premium seat	-	-	-	-	-	○	○	○	○	○	-	-	-	-
Radio incl. Bluetooth hands-free system	-	-	-	-	-	○	○	○	○	○	○	○	○	○
Radio configuration	-	-	-	-	-	○	○	○	-	●	●	●	●	●
Front window protective grating:	-	-	-	-	-	○	○	○	○	○	○	○	○	○
Shatter protection	○	○	○	○	○	○	○	○	○	○	○	○	○	○

Hydraulics

	ET08	EZ10E	ET16	EZ17E	EZ17	ET18	ET20	ET25	EZ26E	EZ26	ET35	EZ36	ET42	EZ50
Pressure release for auxiliary control circuits	-	-	-	-	-	○	○	○	○	○	○	○	○	○
Flat-faced coupler	-	○	○	○	○	○	○	○	○	○	○	○	○	○
Bio-oil Shell Panolin	○	○	○	○	○	○	○	○	○	○	○	○	○	○
Proportional control, (AUX I/H1)	-	-	-	-	●	○	○	○	-	●	●	●	●	●
Flow control valve 3rd control circuit (AUX II/H2)	-	-	-	○	○	○	○	○	○	○	○	○	○	○
Overload valve for auxiliary hydraulics (AUX I/H1)	-	-	-	○	○	○	○	○	○	○	○	○	○	○
Overload warning device, Advanced	-	-	-	○	○	○	○	○	○	○	○	○	○	○
Auxiliary hydraulics dipper stick hose system	○	-	-	-	-	-	-	-	-	-	-	-	-	-
Preparation for EasyLock (AUX IV/Q1)	-	-	○	○	○	○	○	○	○	○	○	○	○	○
Preparation for grapple	-	-	-	○	○	○	○	○	○	○	○	○	○	○
Preparation for hydr. thumb	-	-	-	-	-	-	-	-	-	-	-	-	-	-
Preparation for Powertilt	-	-	-	○	○	○	○	○	○	○	○	○	○	○
Auxiliary double-acting hydraulics (AUX I/H1)	○	●	●	●	●	●	●	●	●	●	●	●	●	●
3rd control circuit (AUX II/H2)	-	-	-	○	○	○	○	○	○	○	○	○	○	○

Paint

	ET08	EZ10E	ET16	EZ17E	EZ17	ET18	ET20	ET25	EZ26E	EZ26	ET35	EZ36	ET42	EZ50
Special paint 1 RAL	○	○	○	○	○	○	○	○	○	○	○	○	○	○
Special paint 1 no RAL	○	○	○	○	○	○	○	○	○	○	○	○	○	○
Special paint cab/canopy RAL	-	-	○	○	○	○	○	○	○	○	○	○	○	○

Security

	ET08	EZ10E	ET16	EZ17E	EZ17	ET18	ET20	ET25	EZ26E	EZ26	ET35	EZ36	ET42	EZ50
Security 24 C (2,000 h)	○	-	○	-	○	○	○	○	-	○	○	○	○	○
Security 36 C (3,000 h)	○	●	○	●	○	○	○	○	●	○	○	○	○	○
Security 48 C (4,000 h)	○	-	○	-	○	○	○	○	-	○	○	○	○	○
Security 60 C (5,000 h)	-	-	○	-	○	○	○	○	-	○	○	○	○	○

● Standard ○ Option - Not available * For cabin version

List may deviate, more info available from sales partner

Miscellaneous

	ET08	EZ10E	ET16	EZ17E	EZ17	ET18	ET20	ET25	EZ26E	EZ26	ET35	EZ36	ET42	EZ50
LED boom work lights	-	●	●	●	●	●	●	●	●	●	●	●	●	●
Front and rear work lights	-	-	○	○	○	○	○	○	○	○	○	○	○	○
Outside rearview mirrors	-	-	○	○	○	○	○	○	○	○	○	○	○	○
Auto-Stop function	-	●	-	-	-	○	○	○	-	○	-	-	○	○
AWS Active Working Signal	-	●	-	-	-	-	-	-	-	-	-	-	●	●
Counterweight	-	-	-	-	○	-	-	-	-	○	○	○	○	○
Diesel filling pump	-	-	-	-	-	-	-	-	-	-	-	-	○	○
Document box	-	●	●	●	●	●	●	●	●	○	●	●	○	○
Automatic RPM speed control	-	●	-	-	-	●	●	●	-	●	●	●	●	●
EquipCare 36 months (including app & manager)	○	○	○	○	○	○	○	○	○	○	○	○	○	○
Drive signal	○	○	○	○	○	○	○	○	○	○	○	○	○	○
Rubber track*	●	●	●	●	●	●	●	●	●	●	●	●	●	●
Piston rod protection	-	-	-	-	-	○	○	○	-	○	-	-	○	○
Long dipper stick	-	-	○	○	○	○	○	○	○	○	○	○	○	○
Long dozer blade	-	-	-	-	-	-	-	-	-	-	-	-	-	-
Swiveling dozer blade	-	-	-	-	-	-	-	-	-	-	○	○	○	○
Rear-view camera	-	-	-	-	-	-	-	-	-	-	-	-	○	○
Green rotating beacon	-	○	-	-	-	○	○	○	-	○	-	-	○	○
Orange rotating beacon	-	○	○	○	○	○	○	○	○	○	○	○	○	○
Orange safety belt	-	-	-	●	●	●	●	●	●	●	●	●	●	●
Steel track*	-	-	-	○	○	-	-	-	○	○	○	○	○	○
Telescopic travel gear	●	●	○	●	●	●	●	●	●	-	-	-	-	-
ISO - SAE switch-over	○	○	○	○	○	○	○	○	○	○	○	○	○	○
VDS	-	-	-	-	-	○	○	○	-	-	○	○	○	-
KAT Drive interlock	-	○	○	○	○	○	○	○	○	○	○	○	○	○

Built-on attachments

	ET08	EZ10E	ET16	EZ17E	EZ17	ET18	ET20	ET25	EZ26E	EZ26	ET35	EZ36	ET42	EZ50
EasyLock	-	-	○	○	○	○	○	○	○	○	○	○	○	○
EasyLock + Powertilt	-	-	○	○	○	○	○	○	○	○	○	○	○	○
EasyLock + Powertilt + load hook	-	-	○	○	○	○	○	○	○	○	○	○	○	○
Hydraulic quick hitch system without load hook	-	-	○	-	-	-	-	-	-	-	-	-	-	-
Hydraulic quick hitch system Lehnhoff + load hook	-	-	-	○	○	○	○	○	○	○	○	○	○	○
Lehnhoff quick hitch system Lehnhoff + Powertilt + load hook	-	-	-	○	○	○	○	○	○	○	○	○	○	○
Mechanical quick hitch system MS01	○	○	○	○	○	○	○	○	○	○	○	○	-	-

● Standard ○ Option - Not suitable * Different widths possible depending on the model



Your excavators always within view: with EquipCare.

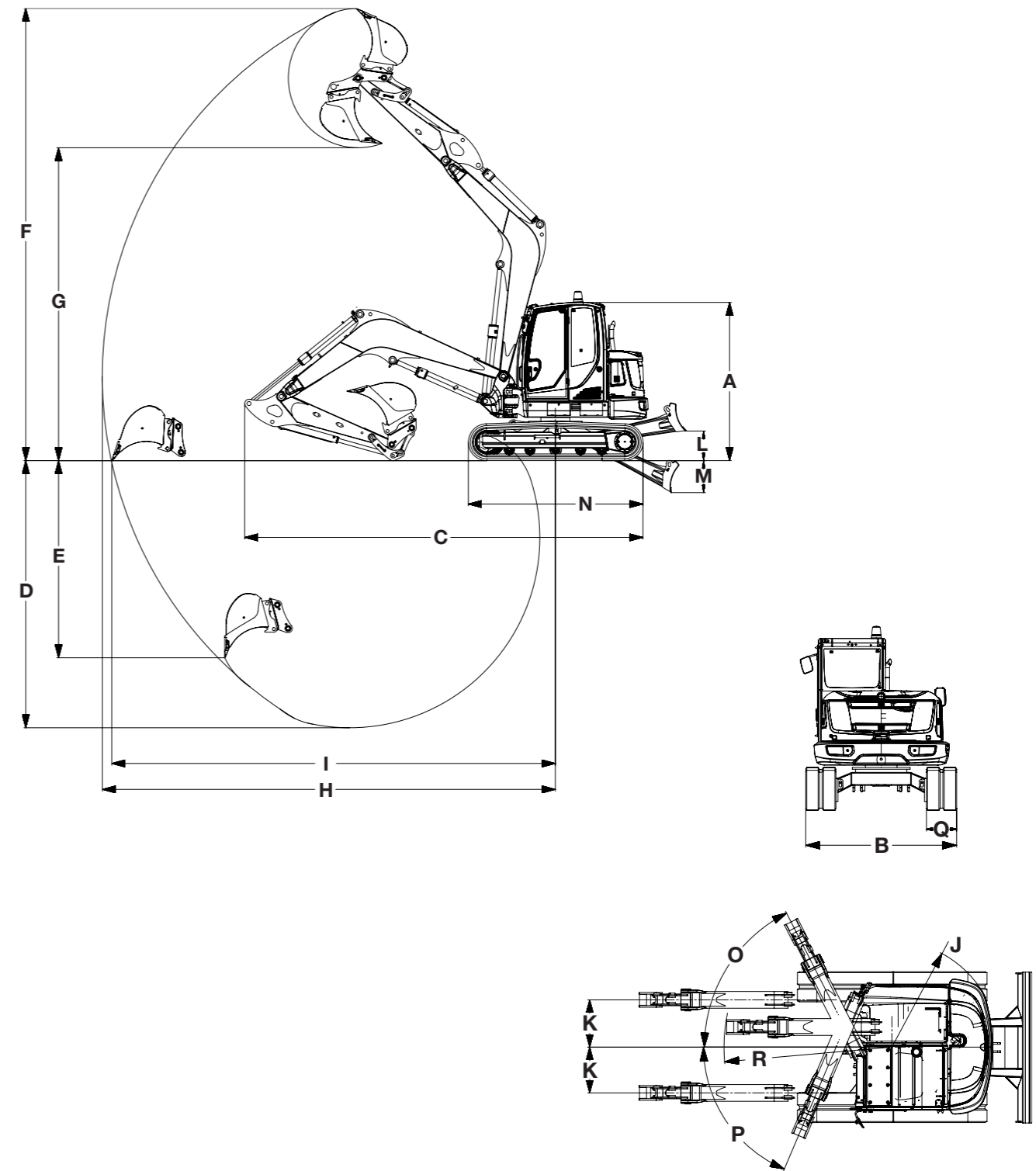
With our Telematics solution, EquipCare, you give your machines a voice. Machines equipped with the Telematics module actively report in, for example to inform you of upcoming maintenance or possible malfunctions. For these machines, our EquipCare Dual ID is also available as an option. This is an electronic access control. You can set exactly who can use your machines, and thus increase security on your construction site.

Dimensions.

	Unit	ET08	EZ10E	ET16	EZ17E	EZ17	ET18	ET20	ET25	EZ26/ EZ26E	ET35	EZ36	ET42	EZ50	
A	Height	mm	1,436 ⁽⁴⁾ , 2,261 ⁽⁵⁾	2,264	2,285	2,365	2,365	2,348	2,348	2,398	2,412	2,491/ 2,573*	2,491/ 2,573*	2,494	2,555
B	Width of the travel gear (track)	mm	700, 860 ⁽³⁾	788, 1,098 ⁽³⁾	990, 1,300 ⁽³⁾	990	990, 1,300 ⁽³⁾	990, 1,300 ⁽³⁾	990, 1,300 ⁽³⁾	1,120, 1,500 ⁽³⁾	1,550	1,630	1,750	1,750	1,960
C	Transport length (short dipper stick)	mm	2,628 ⁽⁴⁾ , 2,746 ⁽⁵⁾	3,073	3,644	3,584	3,584	3,897	4,069	4,120	4,199	4,773	4,878	5,146	5,467
C	Transport length (long dipper stick)	mm	-	-	3,607	3,554	3,551	3,884	4,063	4,125	4,212	4,773	4,878	5,152	5,482
D	Max. digging depth (short dipper stick)	mm	1,763	1,868	2,242	2,323	2,326	2,410	2,543	2,522	2,603	3,245	3,247	3,344	3,467
D	Max. digging depth (long dipper stick)	mm	-	-	2,413	2,483	2,486	2,570	2,703	2,722	2,803	3,497	3,497	3,544	3,667
E	Max. vertical insertion depth (short dipper stick)	mm	1,320	949	1,642	1,710	1,713	1,175	1,241	1,091	1,124	2,120	2,123	2,114	2,085
E	Max. vertical insertion depth (long dipper stick)	mm	-	-	1,802	1,860	1,863	1,305	1,371	1,247	1,281	2,360	2,360	2,293	2,262
F	Max. insertion height (short dipper stick)	mm	2,857 ⁽⁴⁾ , 2,863 ⁽⁵⁾	2,980	3,808 ⁽³⁾	3,465	3,462	3,612 ⁽²⁾	3,840 ⁽²⁾	4,111 ⁽²⁾	4,151	5,010 ⁽²⁾	5,004 ⁽²⁾	5,210	5,470
F	Max. insertion height (long dipper stick)	mm	-	-	3,529 ⁽³⁾	3,579	3,576	3,786 ⁽²⁾	3,954 ⁽²⁾	4,243 ⁽²⁾	4,280	5,163 ⁽²⁾	5,157 ⁽²⁾	5,340	5,599
G	Max. dumping height (short dipper stick)	mm	2,012	2,185	2,396 ⁽³⁾	2,439	2,436	2,491 ⁽²⁾	2,657 ⁽²⁾	2,781 ⁽²⁾	2,764	3,417 ⁽²⁾	3,411 ⁽²⁾	3,573	3,655
G	Max. dumping height (long dipper stick)	mm	-	-	2,518 ⁽³⁾	2,553	2,550	2,605 ⁽²⁾	2,772 ⁽²⁾	2,910 ⁽²⁾	2,893	3,570 ⁽²⁾	3,564 ⁽²⁾	3,703	3,784
H	Max. digging radius (short dipper stick)	mm	3,090 ⁽⁴⁾ , 3,074 ⁽⁵⁾	3,421	3,700	3,900	3,899	3,991	4,158	4,303	4,622	5,270	5,298	5,489	5,916
H	Max. digging radius (long dipper stick)	mm	-	-	3,861	4,050	4,050	4,141	4,308	4,495	4,813	5,507	5,582	5,678	6,105
I	Max. reach at ground level (short dipper stick)	mm	3,028	3,378	3,648	3,848	3,848	3,934	4,087	4,190	4,506	5,158	5,391	5,376	5,794
I	Max. reach at ground level (long dipper stick)	mm	-	-	3,811	4,001	4,002	4,067	4,239	4,388	4,706	5,408	5,641	5,570	5,988
J	Min. tail swing radius	mm	747	650	1,075	660	660	1,123	1,123	1,227	819	1,168	933	1,335	1,047
K	Max. boom offset to center of bucket (right/left)	mm	245/ 283	457/ 369	432/ 287	533/ 418	533/ 418	548/ 386	548/ 386	502/ 361	622/ 584	476/ 447	680/ 650	493/ 532	764/ 770
L	Max. lift height of dozer blade (short/long)	mm	194	202	211, 235 ⁽³⁾	271	271	290/ 367 ⁽²⁾	305/ 367 ⁽²⁾	316/ 345 ⁽²⁾	352/ 374 ⁽¹⁾	393	393	418	410
M	Max. scraping depth of dozer blade under subgrade (short/long)	mm	178	217	264, 270 ⁽³⁾	390	390	446/ 374 ⁽²⁾	437/ 374 ⁽²⁾	441/ 376 ⁽²⁾	409/ 387 ⁽¹⁾	505	505	563	443
N	Total track length	mm	1,220	1,394	1,462	1,607	1,607	1,701	1,701	1,775	1,982	2,062	2,062	2,198	2,508
O	Max. swing angle of arm system to the right	degrees	56	56	49	57	57	55	55	50	50	55	55	55	55
P	Max. swing angle of arm system to the left	degrees	55	56	73	65	65	80	80	80	70	70	70	70	70
Q	Track width	mm	180	180	230	230	230	230	230	250	250/ 300	300	300	350	400
R	Boom swing radius, center	mm	-	1,378	1,195	1,635	1,627	1,576	1,579	1,851	2,102	2,008	2,245	2,175	2,505

⁽¹⁾ With steel chain ⁽²⁾ With VDS ⁽³⁾ With telescopic travel gear ⁽⁴⁾ With roll bar ⁽⁵⁾ Without roll bar

Tracked excavators.



Lift capacity tables.

ET08

A	MAX				2.5 m				2.0 m				1.5 m				1.0 m			
	C		D		C		D		C		D		C		D		C		D	
	Blade up		Telescopic travel gear extended		Blade up		Telescopic travel gear extended		Blade up		Telescopic travel gear extended		Blade up		Telescopic travel gear extended		Blade up		Telescopic travel gear extended	
B	from	up to	from	up to	from	up to	from	up to	from	up to	from	up to	from	up to	from	up to	from	up to	from	up to
2.4 m	216	216'	216	216'	-	-	-	-	-	-	-	-	-	-	-	-	-	-	-	-
2.0 m	205	205'	167	167'	256	256	335	335'	318	318'	318	318'	-	-	-	-	-	-	-	-
1.5 m	163	163	126	126	244	244	337	337	319	319	439	439	438	438	567	567'	-	-	-	-
1.0 m	142	142	109	109	232	232	324	324	296	296	416	416	400	400	569	569	600	600	883	883
0.5 m	135	135	103	103	-	-	-	-	293	293	412	412	397	397	566	566	606	606	889	889
0 m	137	137	104	104	-	-	-	-	-	-	-	-	406	406	575	575'	619	619	851	851'
- 0.5 m	146	146'	115	115	-	-	-	-	293	293	412	412	397	397	566	566	606	606	889	889
- 1.0 m	138	138'	138	138*	-	-	-	-	-	-	-	-	406	406	575	575'	619	619	851	851'

EZ17e

A	MAX				3.0 m				2.5 m				2.0 m				1.5 m			
	C		D		C		D		C		D		C		D		C		D	
	Blade up		Telescopic travel gear extended		Blade up		Telescopic travel gear extended		Blade up		Telescopic travel gear extended		Blade up		Telescopic travel gear extended		Blade up		Telescopic travel gear extended	
B	from	up to	from	up to	from	up to	from	up to	from	up to	from	up to	from	up to	from	up to	from	up to	from	up to
2.5 m	280	320	264	302	-	-	-	-	325	329	306	310	-	-	-	-	-	-	-	-
2.0 m	222	245	209	231	240	240	226	226	326	329	308	310	-	-	-	-	-	-	-	-
1.0 m	179	194	168	182	231	232	218	218	309	310	291	291	438	443	410	414	-	-	-	-
0.0 m	175	190	165	179	219	221	206	2,018	287	289	269	271	401	403	373	376	-	-	-	-
- 1.0 m	211	235	198	221	217	217	204	208	282	287	264	269	396	402	368	375	643	655	591	602
- 1.5 m	267	312	251	293	-	-	-	-	287	287	269	269	402	411	375	383	654	667	602	614

ET16

A	MAX				3.0 m				2.0 m				1.0 m			
	C		D		C		D		C		D		C		D	
	Blade up		Telescopic travel gear extended		Blade up		Telescopic travel gear extended		Blade up		Telescopic travel gear extended		Blade up		Telescopic travel gear extended	
B	from	up to	from	up to	from	up to	from	up to	from	up to	from	up to	from	up to	from	up to
1.5 m	163	222	158	293	181	225	175	297	315	397	315	397	-	-	-	-
1.0 m	150	205	146	272	177	222	171	293	332	406	309	531	-	-	-	-
0.5 m	145	199	141	265	171	217	166	289	311	385	292	513	-	-	-	-
0.0 m	147	203	143	271	167	214	162	286	298	373	280	500	-	-	-	-
- 0.5 m	157	219	153	292	165	209	160	281	292	370	275	497	975	1,226	801	1,708
- 1.0 m	181	256	175	309	-	-	-	-	292	372	275	493	984	1,231	809	1,504
- 1.5 m	240	313	228	313	-	-	-	-	299	373	281	397	-	-	-	-

All table values are given in kg in a horizontal position on a solid surface and without bucket.

EZ17

A	MAX				3.0 m				2.5 m				2.0 m				1.5 m			
	C		D		C		D		C		D		C		D		C		D	
	Blade up		Telescopic travel gear extended		Blade up		Telescopic travel gear extended		Blade up		Telescopic travel gear extended		Blade up		Telescopic travel gear extended		Blade up		Telescopic travel gear extended	
B	from	up to	from	up to	from	up to	from	up to	from	up to	from	up to	from	up to	from	up to	from	up to	from	up to
2.5 m	238	299	264	326	-	-	-	-	277	307	306	334	-	-	-	-	-	-	-	-
2.0 m	186	228	209	251	202	222	226	245	279	307	308	334	-	-	-	-	-	-	-	-
1.0 m	148	179	168	199	194	215	218	238	262	288	287	291	374	413	410	447	-	-	-	-
0.0 m	144	175	165	196	182	204	206	227	240	268	269	296	336	374	373	408	-	-	-	-
- 1.0 m	174	217	198	241	179	200	204	223	234	265	264	293	331	373	368	408	543	609	591	653
- 1.5 m	223	289	251	318	-	-	-	-	240	265	269	293	338	381	375	416	554	621	602	664

The specified lift capacity values refer to the lift capacity of the basic machine without any additional standard components.

Lift capacity tables.

ET18

A	MAX		3.0 m		2.5 m		2.0 m		1.5 m	
B	C	D	C	D	C	D	C	D	C	D
	Blade up	Telescopic travel gear extended	Blade up	Telescopic travel gear extended	Blade up	Telescopic travel gear extended	Blade up	Telescopic travel gear extended	Blade up	Telescopic travel gear extended
2.0 m	290	325	–	–	378	420	–	–	–	–
1.0 m	235	265	276	309	361	402	503	556	–	–
0.0 m	233	263	265	299	341	383	469	523	611	993
– 1.0 m	286	322	–	–	339	380	467	521	621	956*

ET20

A	MAX		3.5 m		3.0 m		2.5 m		2.0 m	
B	C	D	C	D	C	D	C	D	C	D
	Blade up		Blade up	Telescopic travel gear extended	Blade up	Telescopic travel gear extended	Blade up	Telescopic travel gear extended	Blade up	Telescopic travel gear extended
3.0 m	563'	563'	–	–	–	–	–	–	398'	398'
2.0 m	329	327	–	196	355	352	437'	437'	367'	367'
1.0 m	274	272	274	272	344	341	447	441	616	606
0.0 m	271	269	–	–	330	327	423	418	579	570
– 1.0 m	323	320	–	–	329	327	420	415	580	571

ET25

A	MAX		3.5 m		3.0 m		2.5 m		2.0 m	
B	C	D	C	D	C	D	C	D	C	D
	Blade up	Telescopic travel gear extended	Blade up	Telescopic travel gear extended	Blade up	Telescopic travel gear extended	Blade up	Telescopic travel gear extended	Blade up	Telescopic travel gear extended
3.0 m	565	574	–	–	–	–	556'	556'	–	–
2.0 m	388	396	–	–	471	479	594'	594'	–	–
1.0 m	344	351	355	362	448	457	588	597	823	832
0.0 m	356	364	–	–	429	437	556	566	777	787
– 1.0 m	461	470	–	–	–	–	558	568	784	794

EZ26 (Basic machine with additional rear weight)

A	MAX		3.5 m		3.0 m		2.5 m		2.0 m	
B	C	D	C	D	C	D	C	D	C	D
	Blade up		Blade up		Blade up		Blade up		Blade up	
3.0 m	542	456	–	–	552'	477	–	–	–	–
2.0 m	396	334	435	366	558	469	634'	624'	–	–
1.0 m	357	300	419	352	528	441	694	572	–	–
0 m	370	310	408	340	508	421	665	545	951	761
– 1.0 m	464	387	–	–	510	423	667	547	961	770

* Limited by hydraulics

The specified lift capacity values refer to the lift capacity of the basic machine without any additional standard components.

Lift capacity tables.

ET35

A	MAX				4.0 m				3.0 m				2.0 m			
	C		D		C		D		C		D		C		D	
	Blade up				Blade up				Blade up				Blade up			
B	from	up to	from	up to	from	up to	from	up to	from	up to	from	up to	from	up to	from	up to
4.0 m	642	738'	642	738'	-	-	-	-	555	698'	555	698'	-	-	-	-
3.0 m	514	673	556	716'	549	636	594	650'	537	654'	537	654'	-	-	-	-
2.0 m	433	569	469	623	539	740'	583	707	724	829'	724	829'	1,065	1,106'	1,065	1,106'
1.0 m	404	536	438	588	516	831'	560	687	786	936	859	1,034	1,411	1,695	1,582	1,900
0 m	411	553	446	607	496	892'	540	672	741	901	813	999	1,347	1,635	1,515	1,858
- 1.0 m	462	641	503	704	490	843'	534	627	726	895	797	992	1,341	1,644	1,508	1,866
- 2.0 m	626	853'	683	853'	-	-	-	-	740	896	811	982'	1,371	1,585'	1,510	1,585'

EZ36

A	MAX				4.0 m				3.0 m				2.0 m			
	C		D		C		D		C		D		C		D	
	Blade up				Blade up				Blade up				Blade up			
B	from	up to	from	up to	from	up to	from	up to	from	up to	from	up to	from	up to	from	up to
4.0 m	641	710'	633	710'	-	-	-	-	646	679'	646	679'	-	-	-	-
3.0 m	451	627	444	621	531	604'	524	604'	619	621'	619	621'	-	-	-	-
2.0 m	380	533	373	527	518	657	510	650	728	858'	728	858'	1,171	1,321'	1,171	1,321'
1.0 m	353	503	347	497	491	633	483	627	752	949	743	942	1,376	1,729	1,365	1,724
0 m	358	518	352	512	467	615	460	609	703	912	693	905	1,304	1,697	1,292	1,691
- 1.0 m	402	596	395	589	459	614	451	608	687	907	677	899	1,308	1,709	1,296	1,704
- 2.0 m	539	849'	530	849'	-	-	-	-	702	932	692	925	1,342	1,713	1,330	1,708

ET42

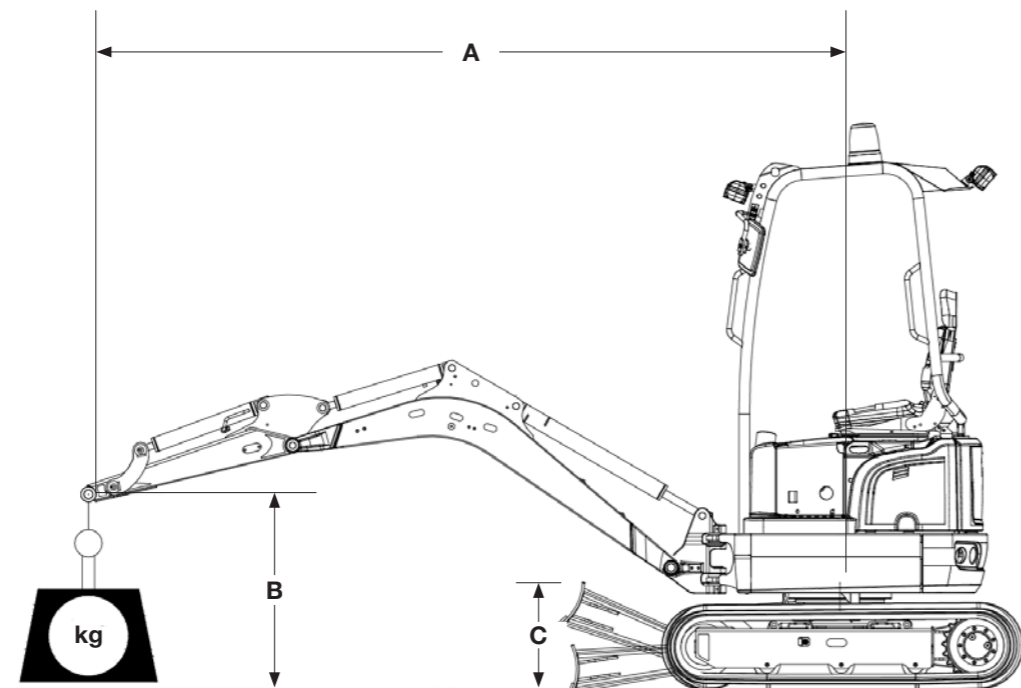
A	MAX				4.0 m				3.0 m				2.0 m				1.0 m			
	C		D		C		D		C		D		C		D		C		D	
	Blade up				Blade up				Blade up				Blade up				Blade up			
B	from	up to	from	up to	from	up to	from	up to	from	up to	from	up to	from	up to	from	up to	from	up to	from	up to
4.0 m	889	973'	834	973'	-	-	-	-	920	920'	920	920'	-	-	-	-	-	-	-	-
3.0 m	662	848	609	784	763	895	702	828	-	-	-	-	-	-	-	-	-	-	-	-
2.0 m	577	724	523	670	746	880	685	813	1,054	1,155'	1,054	1,155'	1,736	1,736'	1,736	1,736'	-	-	-	-
1.0 m	536	685	493	633	717	853	656	786	1,117	1,292	992	1,177	-	-	-	-	-	-	-	-
0 m	548	705	504	651	692	832	633	766	1,047	1,246	942	1,133	2,035	2,372	1,736	2,032	-	-	-	-
- 1.0 m	631	806	568	743	685	831	626	765	1,031	1,237	942	1,125	2,005	2,385	1,723	2,098	7,214	8,786'	7,214	8,786'
- 2.0 m	840	980'	764	980'	-	-	-	-	1,051	1,243	946	1,151'	2,049	2,104'	1,762	2,104'	6,050	6,050'	6,050	6,050'

The specified lift capacity values refer to the lift capacity of the basic machine without any additional standard components.

Lift capacity tables.

EZ50

A	MAX				5.0 m				4.0 m				3.0 m				2.0 m			
	C		D		C		D		C		D		C		D		C		D	
	Blade up				Blade up				Blade up				Blade up				Blade up			
B	from	up to	from	up to	from	up to	from	up to	from	up to	from	up to	from	up to	from	up to	from	up to	from	up to
4.0 m	852	1,058'	778	1,037	-	-	-	-	891	959'	813	959'	-	-	-	-	-	-	-	-
3.0 m	653	856	599	780	-	-	-	-	885	1,008'	808	971	-	-	-	-	-	-	-	-
2.0 m	572	748	525	682	602	741	553	675	856	1,046	780	947	1,347	1,492'	1,203	1,450	-	-	-	-
1.0 m	544	715	500	651	587	728	538	663	819	1,005	745	908	1,252	1,539	1,114	1,366	-	-	-	-
0 m	558	737	512	670	-	-	-	-	789	979	716	883	1,203	1,488	1,074	1,318	-	-	-	-
- 1.0 m	678	837	619	759	-	-	-	-	780	975	707	879	1,194	1,486	1,059	1,316	2,452	3,058	2,046	2,568
- 2.0 m	935	1,074'	845	1,031	-	-	-	-	-	-	-	-	1,216	1,515	1,080	1,344	2,425	2,775'	2,092	2,583



Meaning of abbreviations in tables

- A: Outreach from middle of rotating assembly
- B: Height of load hook
- MAX: Permissible load with extended dipper stick
- C: Dozer blade above, in travel direction
- D: Dozer blade up, superstructure 90 degrees to travel direction

* Lift capacity limited by hydraulics

Actual lift capacity depends on the standard components or standard equipment of the machine. You can find these in the respective operator's manual.

Technical data.

General	Unit	ET08	EZ10e	ET16	EZ17e	EZ17	ET18	ET20	ET25	EZ26e	EZ26	ET35	EZ36	ET42	EZ50
Shipping weight	kg	930–992	1,139–1,169	1,402–1,602	1,681	1,595–1,822	1,780–2,160	1,840–2,180	2,195–2,560	2,288–2,852.1	2,480–2,700	3,365–4,276	3,530–4,446	3,817–4,609	4,617–5,454
Operating weight	kg	1,029–1,089	1,236–1,300	1,529–1,720	1,797–2,152	1,724–1,950	1,940–2,320	2,000–2,340	2,355–2,720	2,439.5–3,237.1	tba	3,555–4,466	3,720–4,636	4,032–4,824	4,847–5,685
Max. ripping force*	kN according to ISO 6,015	4.5	5.7	7.9	9.1	9.1	10.9	12.8	15.7	15.7	15.7	21.1	21.1	20.8	23.6
Max. break out force	kN according to ISO 6,015	8.9	11.7	15.3	20.5	18.7	18.7	22.2	22.6	22.6	22.6	35	35	43.3**	36.8**

Drive	Unit	ET08	EZ10e	ET16	EZ17e	EZ17	ET18	ET20	ET25	EZ26e	EZ26	ET35	EZ36	ET42	EZ50
Manufacturer	–	Yanmar	DANA	Yanmar	DANA	Yanmar	Yanmar	Yanmar	Yanmar	IPM	Yanmar	Yanmar	Yanmar	Perkins diesel engine	Perkins diesel engine
Model	–	3TNV70	SRA150	3TNV76	SRI150-21T48	3TNV80F	3TNV80	3TNV80	3TNV80	–	3TNV80F	3TNV88F-EPWN	3TNV88F-EPWN	403J-E17T	403J-E17T
Design system	–	Liquid-cooled, 3-cylinder diesel engine	Electric motor	Liquid-cooled, 3-cylinder diesel engine	Electric motor		Liquid-cooled, 3-cylinder diesel engine			Electric motor	Liquid-cooled, 3-cylinder diesel engine	3-cylinder Yanmar diesel engine		Liquid-cooled, 3-cylinder turbo engine	
Displacement	cm ³	854	–	1,116	–	1,267	1,267	1,267	1,267	–	1,266	1,642	1,642	1,662	1,662
Engine output	according to ISO kW/hp	9.9/13.3	–	13.8/18.5	16.5	13.8/18.5	14.6/19.9	14.6/19.9	13.8/18.5	–	13.4/18.2	18.2/24.4	18.2/24.4	32.5/44.2	32.5/44.2
Fuel tank volume	l	7	–	24	–	22	29.5	29.5	29.5	–	44	44	44	80	80
Emission standard stage	–	Stage V	–	Stage V	–	Stage V	Stage V			–	Stage V				

Hydraulics	Unit	ET08	EZ10e	ET16	EZ17e	EZ17	ET18	ET20	ET25	EZ26e	EZ26	ET35	EZ36	ET42	EZ50
Hydraulic system / pumps	–	Sum-performance rule / 2-gear pumps	Dual gear pump	LUDV with gear pump	Load-sensing hydraulic system / 1 variable displacement pump	Load-sensing hydraulics system / 1 variable displacement pump	Variable displacement axial piston pump			Variable axial piston pump	Load Sensing Flow Sharing / 1 axial piston pump	2 axial piston pumps / 2 gear pumps		Load Sensing Flow Sharing / 1 axial piston pump	
Max. flow rate	l/min	10.7 + 10.7	11.4 + 11.4	34.5	39.6	39.6	63.0	65.8	65.8	68.6	65.8	42.5 + 42.5 / 23.8 + 11.3	42.5 + 42.5 / 23.8 + 11.3	90	126
Operating pressure for work and travel hydraulics	bar	170	200	200	240	240	240	240	240	240	240	240	240	245	245
Operating pressure for swing gear	bar	70	–	130	160	150	226	226	226	–	196	195	195	206	209
Auxiliary hydraulics, max. discharge volume	l/min	22	22	34	36.1	36.1	45	45	45	45	44.9	66.1	66.1	74	73

Travel gear	Unit	ET08	EZ10e	ET16	EZ17e	EZ17	ET18	ET20	ET25	EZ26e	EZ26	ET35	EZ36	ET42	EZ50
Ground clearance	mm	132	–	180	–	156	170	172	190	–	184	251	251	300	330
Max. travel speed	km/h	1.8	3.8	4.1	4.8	4.8	4.7	4.7	4.7	4.3	4.3	2.7/4.7	2.7/4.7	4.8	4.4
Ground pressure of basic machine	kg/cm ²	0.25	–	0.26	–	0.28	0.35	0.33	0.35	0.24–0.29	0.25–0.30	0.36–0.46	0.36–0.46	0.3–0.38	0.27–0.31

Noise emissions

	Unit	ET08	EZ10e	ET16	EZ17e	EZ17	ET18	ET20	ET25	EZ26e	EZ26	ET35	EZ36	ET42	EZ50
Sound power level (L _{wa})*	dBA acc. to 2,000/14/EC	93	–	93	84	93	93	93	93	85	93	94	94	97	97
Sound pressure level (L _{pa})*	dBA acc. to ISO 6,396	77	67	79	70	79	79	79	79	54.9	77	78	78	76	77

* Short dipper stick ** Dipper stick blade (ISO 6,015), bolted on + HighPower bucket

All information relates to the base machine. Subject to changes.

The Wacker Neuson product range includes over 300 different product series with different versions. The product data may vary accordingly with the selection of different options. Not all Wacker Neuson products listed or shown here are available or allowed in all countries, however. The Wacker Neuson products shown are examples and as such are subject to changes. We are happy to make you a specific offer upon request!

Reproduction only with the written approval of Wacker Neuson.

© Wacker Neuson SE

Battery

	Unit	EZ10e	EZ17e	EZ26e
Battery type		Lithium ion	Lithium ion	Lithium ion
Battery voltage	V	10–14	31	96
Battery capacity	kWh	48	48	30 (39)
Charging time 0 – 100%	h	1.5–4	4–8	1.5–9
Charging time 0 – 80%*	h	1.25	–	–
Running time (uninterrupted)	h	7–9	7.5**	7–9
Drive	kW	10.6	16.5	16

* Best possible charging time from 20% to 90%

** Running time varies depending on the type of application

Wacker Neuson – all it takes.



Concrete technology



Vibratory rammers



Vibratory plates



Rollers



Demolition technology



Generators



Lighting



Pumps



Excavators



Wheel loaders



Telehandlers



Dumpers



Financial solutions



Repair & Maintenance



Academy



EquipCare & EquipCare Pro



Rental



Concrete specialists



eStore



Spare parts



Used machines



ConcreteTec



wackerneuson.com



Instagram
@wackerneuson



Youtube
Wacker Neuson



LinkedIn
Wacker Neuson



TikTok
@wacker.neuson



WN.EMEA.10290.V07.EN-US

02/2026 EN-US