



**WACKER
NEUSON**
all it takes!

EZ10e

Tracked Zero Tail Excavators

100 % electric. 100 % compact. 100 % convincing.

The EZ10e is the innovative 1-tonne zero tail crawler excavator designed for emission-free and quiet operation. With its compact construction and zero tail design, it offers maximum maneuverability in the tightest of spaces. Equipped with flexible charging options, long battery life and a modern display, it is perfect for landscaping, rental parks and indoor demolition. The same performance as conventional models, combined with environmentally friendly technology, makes the EZ10e an indispensable partner for sustainable construction. With flexible charging options, the EZ10e can be charged both at standard household sockets and with high-voltage current. The EZ10e not only offers emission-free working for an entire working day, but also a safe Active Warning Signal (AWS) at the rear of the machine, which, as an additional LED light, makes it possible to see from a distance when the machine is starting up, thus increasing safety and attention around the machine. The EZ10e combines environmental awareness, efficiency and performance - and is the ideal choice for modern, emission-free construction projects.

Highlights

- Full power - without any exhaust emissions
- Compact design, powerful performance
- Comfort that makes all the difference
- Smart charging - ready for use anywhere
- Built for long applications

Technical Data

Hydraulic

Operating pressure hydraulics	200.0 bar
Hydraulic pump	Double gear pump
Flow rate max.	12.6 l/min

Mechanical - Output Details

Ground Pressure (standard track)	0.3 bar
----------------------------------	---------

Mechanical Details

Length	3,073.0 mm
Width	788.0 - 1,098.0 mm
Height	2,264.0 mm
Operating weight (min.-max.)	1,236.0 - 1,397.0 kg
Digging depth (max.)	1,868.0 mm

Motor

Motor type	Permanent magnet synchronous m
------------	--------------------------------

Nominal power	14.00 KW
Nominal current	250.0 A
Nominal voltage	48.0 V
Nominal speed	2,500.0 1/min

Environment Data

Sound level LpA	63.0 dB(A)
Sound power LWA, guaranteed	82.0 dB(A)

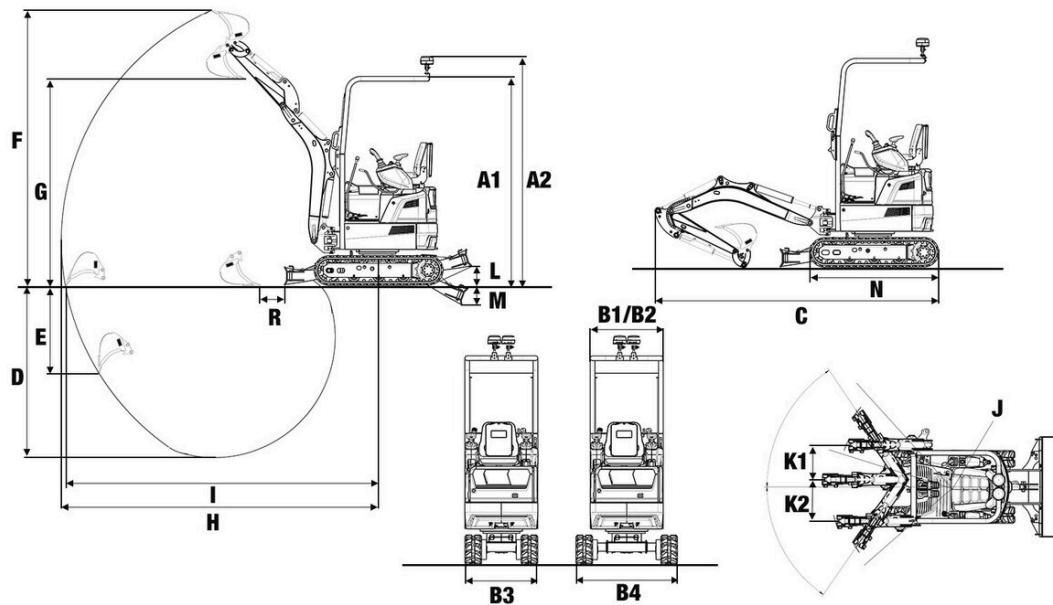
Electrical System

Charging Time	1.2 - 3.6 h
Type of battery	Li-Ion

Shipping and Storage

Shipping weight	1,139.0 - 1,169.0 kg
-----------------	----------------------

Dimensions



A1	Height ROPS	2,264 mm
A2	Height ROPS with rotating beacon	2,481 mm
B1	Width of cab	790 mm
B2	Width of upper carriage	790 mm
B3	Width travel gear retracted	790 mm
B4	Width travel gear extended	1,100 mm
C	Transport length	3,073 mm
D	Digging depth max.	1,868 mm
E	Piercing depth max.	949 mm
F	Piercing height max.	2,980 mm
G	Dumping height max.	2,185 mm
H	Digging radius max.	3,421 mm
I	Max. reach at ground level	3,378 mm
J	Tail swing radius	650 mm
K1	Boom offset max. (to center of bucket right side)	457 mm
K2	Boom offset max. (to center of bucket left side)	369 mm
L	Stacking height max. (dozer blade above surface)	202 mm
M	Digging depth max. (dozer blade below surface)	217 mm
N	Length travel drive	1,394 mm