



**WACKER
NEUSON**
all it takes!

EZ25 Tracked Zero Tail Excavator

Comfort and Power

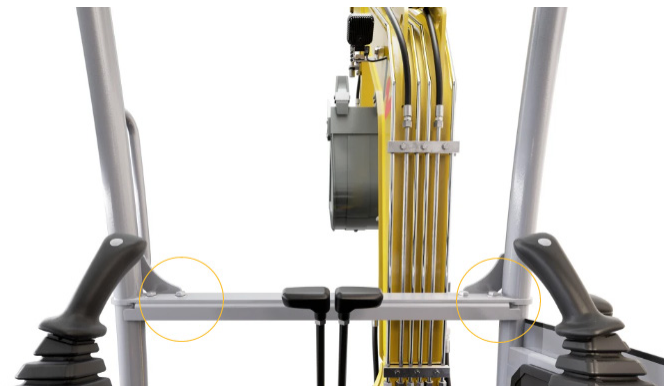
The EZ25 compact excavator offers a modern design, flexibility, and operator-friendliness. Taking the car trailer to the next construction site? No problem – the low weight allows transport including an attachment with a 3.5 metric ton trailer. The EZ25 offers an ergonomic workplace with joystick mount, a wide cab entry, and well-placed operating and display elements.

Highlights



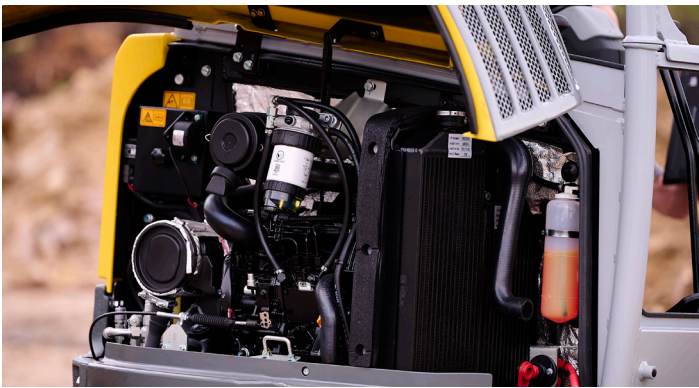
Zero Tail.

When space is limited: Pivot safely, even in the tightest of spaces or right next to the wall - with the Zerotail excavator without rear overhang, no problem. Optimal working in limited working conditions, high manoeuvrability and time savings are guaranteed.



Canopy can be easily disassembled.

The easy disassembly of the canopy allows optimal maintenance access. On the construction site too, low passage heights can be overcome quickly by disassembling it and reassembling for safe operation.



Optimised hydraulics or engine-pump management.

An optimised drive concept of the latest generation enables precise, fast, and efficient work. The electronically controlled hydraulic pump permanently adapts the required hydraulic power to the available power of the diesel engine, taking into account the operating conditions.

Technical Information

	Units	EZ25
Hydraulic		
Operating pressure	bar	225
Flow rate max.	l/min	90
Tank capacity	l	30
Mechanical - Output Details		
Superstructure turning speed	kg/m2s	10.3
Travel speed stage 1	km/h	2.1
Travel speed stage 2	km/h	3.8
Break Out Force Bucket	kN	22.5
Break Out Force Lift Arm	kN	15.3
Mechanical Details		
Length	mm	4,290
Operating weight (min.-max.)	kg	2,656 - 3,513
Digging depth (max.)	mm	2,737
Width	mm	1,570
Height	mm	2,414



Easy transport by car trailer.

With the car trailer to the next construction site? No problem - the low weight allows transport incl. attachment tools by means of a 3.5 t trailer.

	Units	EZ25
Engine		
Cylinder capacity	cm3	1,116
Tank capacity	l	36
Effective power	KW	15.8
Nominal engine speed	kg/m2s	2,500
Starter battery Voltage	V	12%
Battery capacity (nom. value)	cos φ	44
Motor type		Diesel engine
Manufacturer		Yanmar
Operating Fluids		
Cooling fluid volume	l	4.5
Hydraulic fluid volume	l	30
Chassis		
Drive unit		Axialpistonmotor with RGU
Shipping and Storage		
Shipping weight	kg	2,553



The images, equipment and data shown may differ from the range of products currently available in your country. Optional equipment may be shown under certain circumstances subject to a surcharge in the price. The right to make any changes is reserved.