



**WACKER
NEUSON**
all it takes!

Dumpers

Wheel and Dual View



Productivity at its best

You can't choose the terrain or soil properties of your job sites, but you can choose a Wacker Neuson dumper to navigate them. Whether it's a versatile wheel dumper or one of the safety-focused Dual View Dumper models, you'll find the perfect Wacker Neuson machine for every type of construction site. Our dumpers are impressive for their simple operation and powerful functions, which ensure that you have the right equipment to reliably transport materials exactly where you need them.



Wacker Neuson - all it takes!

No matter what challenges you face, Wacker Neuson has all it takes. We offer customers across the globe a comprehensive range of equipment designed for applications across construction, landscape, agriculture, industrial and municipal industries. In addition to our excavators, our diverse range of products includes concrete technology, compaction equipment, light towers, generators, pumps, heaters, compact and utility track loaders, wheel loaders, telehandlers and dumpers. Wacker Neuson products are sold, rented and serviced by a quality dealer network near you.



Find a Dealer



wackerneuson.com

Contents

Wheel dumpers	6
DW30, DW50	6-11
Dual View dumpers	12
DV60, DV90, DV100, DV125	12-17
Configuration options	18
Dimensions	20
Technical data	22



**All it takes for the
challenges you face.**



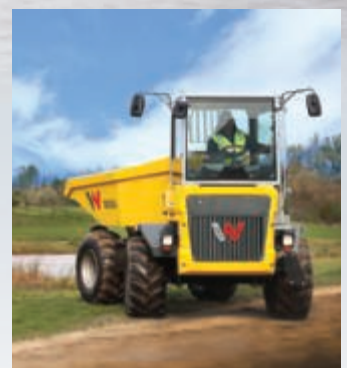
DW30



DW50



DV60



DV90



DV100



DV125





Material transport made easy: DW30 and DW50

	DW30	DW50
Max. payload (lbs)	6,614	11,023
Engine output (hp)	45.3	59.7
Width (in)	68.1	70.1
Max. skip capacity heaped (yd ³)	2.29	3.47
Skip versions		



Safe operation, comfortable transportation: DW30 and DW50 at a glance.

| Safety

- Hydrostatic 4-wheel drive
- Spring-loaded parking brake
- Front and rear-view camera (DW50)
- Seat contact switch
- Automatic brake lights with hydrostatic braking function
- High visibility color for platform entry and exit

| Maintenance

- Easy service and maintenance access
- Extended maintenance intervals

| Versatility

- Choose from cab or roll over protection system (ROPS) models
- Available with optional turf tires





Comfort

- Cab models feature tinted safety glass and optional air conditioning
- Clearly arranged instrument panel with joystick operation
- Large control stand
- Entry and exit on both sides
- Lockable storage options in the wheel fender

Efficiency

- Compact dimensions
- High ground clearance
- Continuous speed up to 15.5 mph (25 km/h)
- Auto-stop function

Optimized for comfort, maximum safety and intuitive operation DW30 and DW50 wheel dumpers.



Spacious Comfortable Cab

The optional cab on the DW30 features ROPS/FOPSII certification as standard and adds protection from external influences to ensure a comfortable working environment in every kind of weather.



Extended Maintenance Intervals

Maintenance intervals of 500 operating hours allow for possible cost savings, reducing the need for service and increasing operation hours on the job.



Tilt Monitoring

When the skip is raised, the tilt monitoring feature checks the inclination of the machine. A continuous acoustic tone is then activated and a flashing icon appears on the display when the machine is at a lateral inclination of 7° or longitudinal inclination of 10°.



Skip Monitoring

To prevent damage and promote safety, the skip monitor checks whether the skip is in home position or raised. If the skip is raised, the system reduces travel speed to a maximum of 8 mph.

ation:



Hydrostatic 4-wheel Drive

With hydrostatic 4-wheel drive, the operator can concentrate on the task at hand, without frequent gear shifting. This feature delivers constant tractive force from zero to the maximum speed.



High Visibility Color Entry Identification

Highlighted in caution red, the steps and grab bars give higher visibility to entry and exit points, enhancing safety.



Auto-stop Function

The integrated auto-stop function turns the machine off automatically, after five minutes without use. This period of time can be adjusted and the operator is notified visually and acoustically before switching off. This helps reduce both the engine running time and exhaust emissions.



Automatic Brake Lights

The hydrostatic braking function engages when the operator takes his foot off the throttle pedal. This also activates the brake lights, alerting those on the jobsite that the machine is slowing down.





Dumper and truck in one:

DV60, DV90, DV100, DV125 Dual View dumpers

	DV60	DV90	DV100	DV125
Max. payload (lbs)	13, 228	19,842	22,046	27,558
Engine output (hp)	75.3	75.3	75.3	135.9
Width (in)	86.5	95.3	95.3	100.0
Max. skip capacity heaped (yd³)	4.58	6.02	6.54	9.2

Skip versions



Dumpers with safety at the forefront: DV60, DV90, DV100, DV125 at a glance.

| Safety

- Tilt monitoring warns the operators of unsafe use
- Rugged skip guard
- Enhanced field of vision over standard wheel dumpers
- Spring-loaded parking brake
- Cameras include washing system
- Belt and rotating beacon in signal color
- Entry in high visibility color
- Automatic brake lights with the hydrostatic braking function
- Tilt Monitoring
- Seat contact switch
- LED lighting surrounding the machine

| Maintenance

- High-quality materials
- Lockable toolbox in the wheel fender, as standard
- Convenient service and maintenance access
- Optimal placement of service and maintenance points





Comfort

- Swivel seat without a center console
- Operator comfort features include storage options and jacket hook
- Fold-up armrest for simple entry and exit on both sides
- Spacious, comfortable cabin with optional air-conditioning system
- Clearly arranged instrument panel with joystick operation
- Tinted windows with UV protection

Efficiency

- Auto-stop function
- Compact dimensions
- Hydrostatic 4-wheel drive with automatic ECO mode
- Intuitive joystick operation

A view on safety:

DV60, DV90, DV100, DV125 Duel View dumpers.

An unrestricted view – especially in the main direction of travel.

With our Dual View dumpers, you can quickly and comfortably change the seat and console position and keep your task front and center. The entire operating platform rotates 180 degrees, giving you the best view while working or driving the machine. This provides added safety on your construction site. Even in confined spaces, you can safely and precisely get the job done.



Ergonomic swivel console enhances operator comfort.

Adjustable premium steering wheel tilts to simplify safe entry and exit

Rotating assembly mounted on bearings for quick change of the seat position

Adjustable armrest

Fold-up joystick console for exiting on both sides in either direction of travel

Multi-purpose display for machine functions, with lockable display protection

Screen for standard rear-view camera with lockable anti-vandalism protection; screen and camera fulfill IP69

New swivel seat design allows freedom for leg movement





Innovative and Safe

Safety features for the operator and job site include hill-hold function, tilt monitoring, skip monitoring and seatbelt monitoring with start release.



Camera Wash System

Standard Dual View features include LED lighting and cameras for great visibility. The cameras have an integrated wash system to remove dirt and debris, keeping the field of view clear without manual cleaning.



Cab Comfort

The exceptionally well-equipped cab makes work comfortable year-round for the operator. Ergonomic features include an optimal arrangement of all switches and control elements for productivity and efficiency.



Seat Belt Monitoring

The seat belt monitoring system signals visually and acoustically, if an attempt is made to start the machine when the operator is not wearing a seat belt.

Configuration options

	DV30	DV50	DV60	DV90	DV100	DV125
Skip						
Asphalt skip 2.2 m	-	-	-	-	-	-
Swivel tip skip	○	●	○	○	-	-
Front tip skip	●	-	●	●	●	●
High tip skip	-	-	-	-	-	-
Light material skip	-	-	-	-	-	-
Swivel tip skip 3m	-	-	-	-	-	-
Concrete skip incl. pouring pan	○	-	-	-	-	-
High swivel tip skip	○	-	-	-	-	-
Swivel tip skip with self-loading equipment	-	-	-	-	-	-
Cab / ROPS / canopy						
Cab ROPS / FOPS Level II	○	-	○	○	○	○
Canopy ROPS / FOPS Level II	-	-	○	○	○	○
Air-conditioning system	○	-	○	○	○	○
Bluetooth radio with hands-free system	○	-	○	○	○	○
Weather protection roof	○	○	-	-	-	-
Fold-down ROPS bar	-	-	-	-	-	-
Fold-down ROPS bar with gas pressure damper	●	●	●	●	●	●
Laminated safety glass VSG	●	-	●	●	●	●
Tinted windows	●	-	●	●	●	●
7-inch display (protective class IP69)	-	●	●	●	●	●
Vandalism protection, display	-	●	●	●	●	●
Seat heating	-	○	-	-	-	-
Document box (watertight) (lockable)	-	●	●	●	●	●
Toolbox on both sides (lockable)	-	○	-	-	-	-
Imitation leather seat and seat contact switch	-	-	○	○	○	○
Engine, drive system and hydraulics						
Stage V emission standards	●	●	●	●	●	●
100% electric drive system	-	-	-	-	-	-
Battery charger for xGEI 230 V 16A	-	-	-	-	-	-
Auto-stop function	○	●	●	●	●	●
25 km/h version	○	●	●	●	●	●
30 km/h version	-	○	○	○	○	○
Hydrostatic 4-wheel drive	●	●	●	●	●	●
Cruise control	○	○	○	○	○	○
Articulated pendulum joint	●	●	●	●	●	●
Partially locked differential	●	●	-	-	-	-
DV 30 / 10 / 15 / 10 km/h	-	-	○	○	○	○
DV 30 / 15 / 20 / 15 km/h	-	-	○	○	○	○
Panolin HLP Synt46 (Bio-oil)	○	○	○	○	○	○
6-point central lubrication system	-	-	○	○	○	○

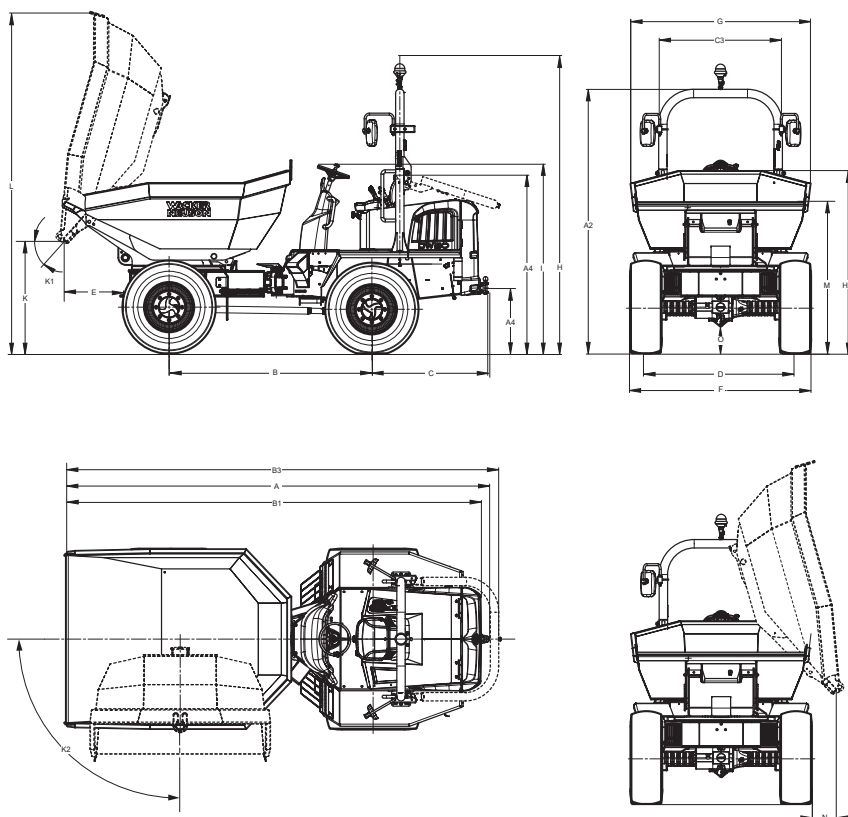
● Standard ○ Option - Not available

	DW30	DW50	DV60	DV90	DV100	DV125
Paint						
Special paint cab/canopy/ROPS	–	○	○	○	○	○
Special machine paint, no RAL	○	–	○	○	○	○
Single-color RAL special paint	○	○	○	○	○	○
Guarantee and EquipCare						
EquipCare incl. app and PC manager*	○	○	○	○	○	○
EquipCare Dual ID	○	○	○	○	○	○
Security 24 C (2,000 h)	○	○	○	○	○	○
Security 36 C (3,000 h)	○	○	○	○	○	○
Security 48 C (4,000 h)	○	○	○	○	○	○
Security 60 C (5,000 h)	○	○	○	○	○	○
Tires						
Turf tires	○	–	○	–	–	–
Tires with tractor tread	●	●	●	●	●	●
Narrow tires	○	–	–	–	–	–
Tires with all-round tread	○	○	○	○	○	○
Twin tires	–	–	–	–	–	–
Safety						
LED front + rear work lights	○	○	○	○	○	○
Rear working lights LED	–	–	●	●	●	●
Side marker lights	–	–	○	○	○	○
Side mirror (rear-view mirror)	○	●	●	●	●	●
Reverse alarm	○	–	●	●	●	●
Broadband tone reverse alarm	–	○	–	–	–	–
Skip guard	○	○	○	○	○	○
Entry in high visibility color	○	○	○	○	○	○
Orange LED rotating beacon	○	○	○	○	○	○
Green LED rotating beacon	○	–	○	○	○	○
Orange safety belt	○	●	○	○	○	○
Front view camera	○	●	○	○	○	○
Rear-view camera	○	○	●	●	●	●
Rear LED light (incl. dynamic turn signal)	–	○	–	–	–	–
Camera washing system	–	●	–	–	–	–
Hill hold	–	○	–	–	–	–
Seat belt monitoring and start release	–	○	–	–	–	–
Hill-hold function	–	–	○	○	○	○
Start release for seat-belt monitoring	–	–	○	○	○	○
Miscellaneous						
Towing device	○	○	○	○	○	○
Plug receptacle for towing device	○	○	○	○	○	○
Road lights	–	–	○	○	○	○
Equipment for road traffic	○	○	●	●	●	●
Manufacturer confirmation	○	○	○	○	○	○
Wheel chock	○	○	○	○	○	○
TÜV road homologation (Germany)	○	○	○	○	○	○

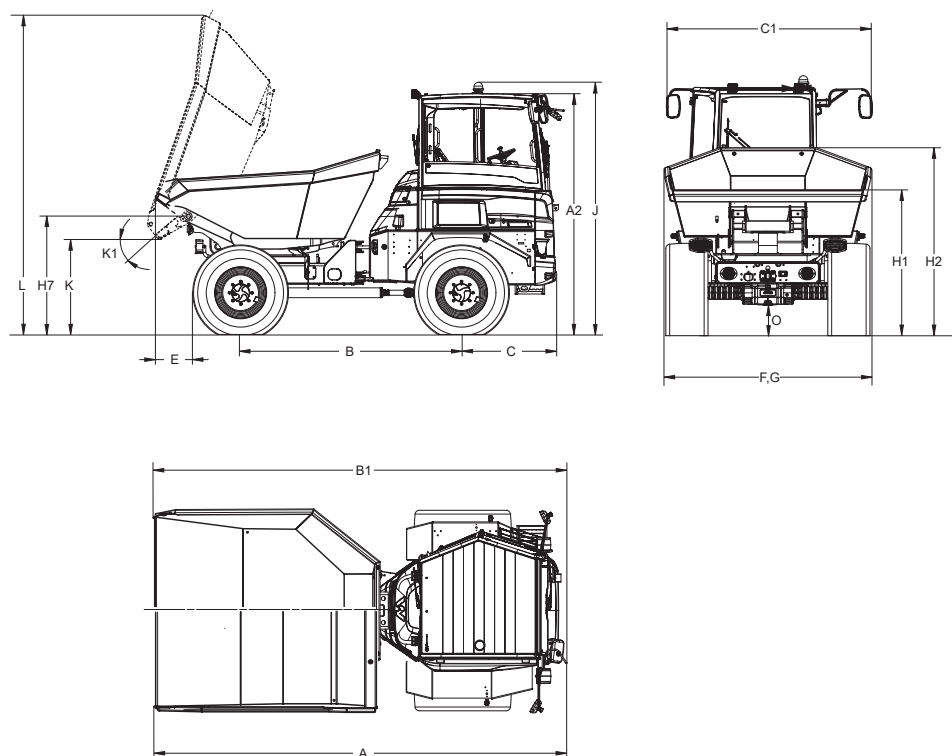
● Standard ○ Option – Not available

Dimensions

		DW30		DW50
		Swivel tip skip	Concrete skip	Swivel tip skip
A Total length	in (mm)	153.7 (3,904)	192.5 (4,890)	173.7 (4,412)
B Wheel base	in (mm)	82.3 (2,090)	82.3 (2,090)	86.2 (2,190)
C Rear overhang	in (mm)	45.5 (1,156)	48.9 (1,156)	48.9 (1,156)
E Dumping width	in (mm)	21.2 (539)	47.7 (1,212)	22.4 (616)
F Width of vehicle	in (mm)	70.1 (1,780)	70.1 (1,780)	75.4 (1,915)
G Width of skip	in (mm)	68.1 (1,730)	68.5 (1,740)	75.8 (1,926)
H Height ROPS	in (mm)	112.6 (2,860)	112.6 (2,860)	110.8 (2,783)
I Height of ROPS folded	in (mm)	76.6 (1,945)	76.6 (1,945)	77.7 (1,944)*
J Height with cab	in (mm)	105 (2,669)		
K Dumping height max.	in (mm)	39.1 (994)	14.3 (363)	44.9 (1,111)
L Skip height tipped	in (mm)	121.3 (3,082)	119.7 (3,040)	138.2 (3,479)
M Skip height not tipped	in (mm)	58.1 (1,475)	66.9 (1,698)	68.8 (1,882)
N Dumping distance lateral	in (mm)	11 (280)	27.6 (700)	10.0 (253)
O Ground clearance	in (mm)	10.1 (257)	10.1 (257)	11.1 (282)



DV60	DV90	DV100	DV125
Swivel tip skip	Swivel tip skip	Front tip skip	Front tip skip
185 (4,700)	193 (4,891)	184 (4,660)	210.3 (5,342)
97.8 (2,485)	106.3 (2,700)	106.3 (2,700)	114.2 (2,900)
45.6 (1,157)	45.6 (1,157)	45.6 (1,157)	49.2 (1,252)
23.6 (599)	21.9 (555)	28.7 (729)	24.7 (628)
86.5 (2,196)	95.3 (2,420)	95.3 (2,420)	100.0 (2,540)
87.3 (2,217)	96.6 (2,453)	98.6 (2,504)	99.1 (2,519)
135.2 (3,434)			
96.0 (2,439)			
115.2 (2,926)	119.3 (3,029)	119.3 (3,029)	120.6 (3,063)
43 (1,100)	47.3 (1,202)		24.2 (615)
143 (3,631)	157.9 (4,010)	107.9 (2,740)	144.1 (3,659)
78.8 (1,838)	80.2 (2,036)	81.6 (2,073)	87.5 (2,223)
8.2 (209)	10 (249)		
14.3 (364)	15.4 (390)	15.4 (390)	15.2 (388)



Technical data

Unit		DW30		DW50
		Swivel tip skip	Concrete skip	Swivel tip skip
General				
Payload	lbs (kg)	6,613.9 (3,000)		11,023 (5,000)
Shipping weight	lbs (kg)	4,722 (2,142)	5,675 (2,574)	6,847.6 (3,106)
Skip capacity struck	gal (l)	3,38.1 (1,280)	435 (1,650)	528.4 (2,000)
Skip capacity heaped	gal (l)	462.3 (1,750)	528 (2,000)	700.1 (2,650)
Skip capacity volume of water	gal (l)	262 (990)	317 (1,200)	348.7 (1,320)
Engine				
Manufacturer/model	–	Perkins 403J-E17T		Deutz TD 2.2
Design system	–	Water-cooled 3-cylinder turbo diesel		water-cooled 3-cylinder turbo diesel
Power (ISO 3046/1)	hp (kW)	45.3 (36)		59.7 (44.5)
Displacement	in ³ (cm ³)	101.5 (1,663)		134.3 (2,200)
Emissions/emission standard	–	EPA Tier 4 final; EU Stage V		Stage V
Drive characteristics				
Max. travel speed	mph (km/h)	12.4 (20) - 15.5 (25)		25/30 (40.23/48.2)
Articulation	degrees	± 36		± 37
Swing	degrees	± 15		± 15
Turning radius external	in (mm)	149.6 (3,800)		168.5 (4,280)
Gradeability	%	62		58
Drive system				
Drive system	–	4WD Hydrostatic		4WD Hydraulic- incl. ECO mode
Tires - standard	–	11.5 / 80 –15.3 tractor tread		12.5 –18 16PR MPT-01TL
Hydraulic system				
Drive pump	–	Axial piston pump		Axial piston pump
Flow rate	gal (l) min	10.1 (66)		32.5 (123.2)
Operating pressure	psi (bar)	5,801.5 (400)		6,817 (470)
Work pump	–	Gear pump		Gear pump
Flow rate	gal (l) min	8.0 (33.4)		15.0 (57.66)
Operating pressure	psi (bar)	2,901.7 (200)		3,190.8 (220)
Tank capacity				
Diesel tank	gal (l)	12.0 (45.0)		15.85 (60.0)
Hydraulic oil tank	gal (l)	7.4 (28.0)		10.51 (39.8)
Noise emissions				
Sound power level (LWA) (according to 2000/14/EC)	dB(A)	101		101
Emission sound pressure level (LpA)	dB(A)	81 / 77*		81

* Optional engine data

DV60	DV90	DV100	DV125
Swivel tip skip	Swivel tip skip	Front tip skip	Front tip skip
13,228 (6,000)	19,842 (9,000)	22,046.2 (9,979)	27,557.8 (12,500)
10,361.7 (4,700)	11,023 (5,100)	???	14,056.7 (6,376)
634 (2,400)	871.7 (3,300)	1,096.3 (4,150)	1,558.6 (5,900)
924.6 (3,150)	1149.1 (4,350)	1,320.9 (5,000)	1,849.2 (7,000)
422.7 (1,600)	541.5 (2,050)	660.4 (2,550)	977.5 (3,700)
Deutz TD 2.9	Deutz TD 2.9	Deutz TD 2.9	Deutz TCD3.6 L4
water-cooled 4-cylinder turbo diesel	water-cooled 4-cylinder turbo diesel	water-cooled 4-cylinder turbo diesel	water-cooled 4-cylinder turbo diesel
75.3 (55.4)	75.3 (55.4)	75.3 (55.4)	135.9 (100.0)
219.7 (3,600)	178.4 (2,924)	177.0 (2,900)	219.7 (3,600)
Stage V	Stage V	Stage V	Stage V
48.2 (30)	48.2 (30)	48.2 (30)	15.5 (25)
± 29	± 28	± 28	± 28
± 11	± 11	± 11	± 11
240.6 (6,110)	260.6 (6,620)	259.8 (6,600)	283.0 (7,188)
58	50	58	50
4WD Hydraulic- incl. ECO mode	4WD Hydraulic- incl. ECO mode	4WD Hydraulic- incl. ECO mode	4WD Hydraulic- incl. ECO mode
500 / 60–22.5 flotation tires	500 / 60–22.5 flotation tires	500 / 60–22.5 flotation tires	600/50 - 22.5 All. flotation331
Axial piston pump	Axial piston pump	Axial piston pump	Axial piston pump
47 (180)	32 (123)	32 (123)	39 (150)
7251.9 (500)	7251.9 (500)	7251.9 (500)	8,702.3 (600)
Gear pump	Gear pump	Gear pump	Gear pump
23.0 (88.0)	23.0 (88.0)	18.0 (70.0)	18.0 (70.0)
3,480.9 (240)	3,480.9 (240)	3,480.9 (240)	3,480.9 (240)
21.13 (80.0)	21.13 (80.0)	21.13 (80.0)	39.4 (149.0)
15.0 (60.0)	15.0 (60.0)	15.0 (60.0)	14.5 (55.0)
101 dB(A)	101 dB(A)	101 dB(A)	101 dB(A)
80	80	80	80

Wacker Neuson – all it takes.



Concrete Technology



Compaction Equipment



Light Towers



Generators



Pumps



Heaters



Utility Track Loaders



Compact Track Loaders



Excavators



Wheel Loaders



Telehandlers



Dumpers



Finance



Warranty



University



EquipCare



Genuine
Spare Parts

