



**WACKER
NEUSON**
all it takes!

EZ17

Tracked Zero Tail Excavator

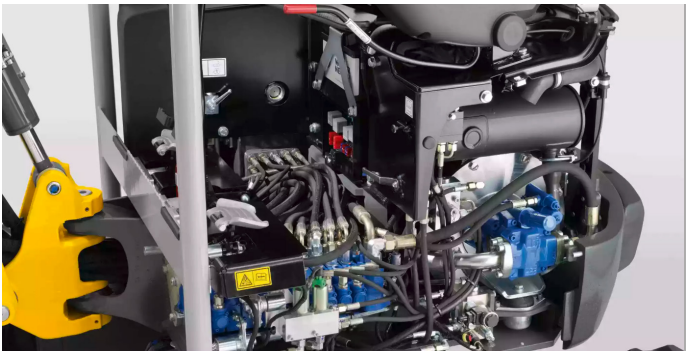
5 years /
5,000 hours
warranty



Compact, powerful and manoeuvrable.

The EZ17 compact excavator is the most powerful zero tail excavator in its class. The large-volume diesel engine, LUDV (Load Sensing System) and an innovative cooling system provide

the highest levels of performance and efficiency. The compact and durable design guarantees a long service life. The EZ17 offers the operator an unrestricted field of vision through the roof window.



Powerful drive system with LUDV.

The powerful drive system combines with a load-sensing hydraulic system (LUDV) to deliver quick working cycles, greater application flexibility and easier control for comfortable and fatigue-free operation of the excavator. No matter what the load to be moved, the control movements on the joystick stay the same. Along with increased operating comfort this results in a performance plus while simultaneously reducing fuel consumption.



Swivel bracket.

A swivel bracket allows the arm system to be swiveled in both directions independently of the position of the uppercarriage. This enables precise work along walls or trenches. Working around obstacles or in flowing traffic is made easier and the visibility range for excavation work is increased.

The construction equipment warranty terms and policy (Terms) covers all Wacker Neuson products sold by and in the Wacker Neuson Pty Ltd region of Australia and New Zealand. Product Registration is required to activate extended warranty period on eligible machines. Machines not registered within 30 days of purchase will have the Statutory 1 Year/1,000 hours warranty period.



LED work lights

Optimum illumination enhances safety around the work area and provides a higher utilization of the machine at night or in poor lighting conditions. The LED technology also offers longer service life of the fixtures



Canopy can be easily disassembled.

The canopy is designed in three parts. The roof part can be removed when entering restricted height areas, while the front and the rear parts remain on the machine, providing enhanced safety protection.

EZ17 Technical Information.

	Units	EZ17
Operating Fluids		
Hydraulic fluid volume	l	21
Chassis		
Traction drive	l/min	axial piston motor
Operating pressure	bar	240
Hydraulic		
Operating pressure	bar	240
Flow rate	l/min	39
Tank capacity	l	21
Mechanical Details		
Length	mm	3,585
Width	mm	990
Height	mm	2,360
Operating weight (min. - max.)	kg	1,784 - 1,950
Digging depth (max.)	mm	2,330
Mechanical Details - Output Details		
Travel speed stage 1	km/h	2.6
Travel speed stage 2	km/h	4.8
Shipping and Storage		
Length for shipping	mm	3,585
Width for shipping	mm	990

	Units	EZ17
Height for shipping	mm	2,360
Shipping weight	kg	1,649
Environmental Data		
Sound level LpA	dB(A)	79
Sound power LWA, measured	dB(A)	93
Sound power LWA, guaranteed	dB(A)	93
Engine		
Cooling		water-cooling
Engine type		Diesel engine
Cylinder		3
Cylinder capacity	cm3	1,116
Tank capacity	l	22
Effective power	KW	13.8
Nominal engine speed	l/min	2,200
Starter battery voltage	V	12
Battery capacity (nom. value)	Ah	44
Manufacturer		Yanmar
Engine Designation		3TNV76-SCWN
Operating Fluids		
Oil volume	l	2,800
Cooling fluid volume	l	4.8

The images, equipment and data shown may differ from the range of products currently available in your country.
Optional equipment may be shown under certain circumstances subject to a surcharge in the price. The right to make any changes is reserved.