



**WACKER  
NEUSON**  
*all it takes!*

# WL60

## Wheel Loader



### High productivity and ideal comfort.

The WL60 wheel loader offers an extremely comfortable cab and a wide variety of options. The operating philosophy is designed for ergonomics. Everything is well within the operator's reach ensuring fatigue-free work even over a longer period of time. The high flow load-sensing performance hydraulics with 150 l/min flow rate is the strongest in the 6t class, also ensuring greater operating comfort and less fuel consumption by the machine.

	Units	WL60
Operating weight	kg	11.250
Payload / Tipload	kg	1.724 – 2.083
Bucket capacity heaped	m <sup>3</sup>	1.55

### Clear 3.5-inch digital display.

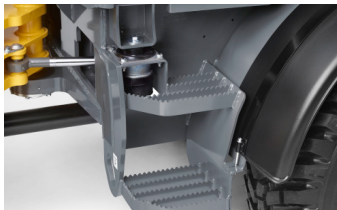
- The most important functions are always kept in view: With the digital display, the operator maintains a clear overview of the machine. In addition to standard displays such as temperature, tank level or operating hours, active functions, such as active electrical functions, the continuous operation of the 3rd control circuit or the activated differential lock are displayed.
- The various functions and settings are controlled via the jog dial, which makes operation simple and convenient for the operator.

### High hydraulic performance.

- A Wacker Neuson wheel loader always has enough hydraulic output and is thus suited for the operation of many different attachments, which in turn makes a great variety of applications areas possible.
- The flexible combination with various attachments reduces the total fleet and thus the total cost of ownership (TCO).
- Compact machines with high hydraulic output save money, as it is not necessary to immediately procure or use a bigger machine.

Easily accessible machine components.

- Regularly lubricating all lubrication points is essential for the correct and effective maintenance and thereby the value retention of the machine. To save time and make work easier, the lubrication points on Wacker Neuson wheel loaders are always in an easily accessible position.



WL60 Technical Information.

	Units	WL60
Mechanical – Output Details		
Travel speed	km/h	20
Travel speed stage 1	km/h	0–7
Travel speed stage 2	km/h	0–20
Travel speed (Option)	km/h	40
Mechanical Details		
Operating weight	kg	5,900
Bucket capacity	m³	1
Hydraulic		
Operating pressure	bar	210
Flow rate	l/min	100
Tank capacity		95
Operating fluids		
Hydraulic fluid volume		125
Tank capacity AdBlue® / DEF		19
Fuel tank capacity		105
Chassis		
Operating pressure	bar	455
Flow rate	l/min	156
Engine		
Cylinder		4
Cylinder capacity	cm³	3,621
Power rating max.	KW	75
Engine speed (Power max.)	1/min	2,200
Engine type		Diesel engine
Fuel type		Diesel EN
Manufacturer		Perkins
Engine designation		904J – E36TA