



ET20

Tracked Conventional Excavator

Stability meets specially developed boom

The ET20 compact excavator not only shows what it can do with its powerful drive system, but also offers a variety of innovative features and options. The ET20 achieves excellent excavation results and stability thanks to its specially developed longer travel gear and boom. The hydraulically pilot-operated drive pedals allow the excavator to be controlled precisely with the feet.

Highlights

- Hydraulic telescopic travel gear with dozer blade extension
- VDS Vertical Digging System
- Comfortable, fully glazed cab
- Innovative front windshield system
- Easy service and maintenance access

Technical Data

Hydraulic

Operating pressure hydraulics	2,900.0 psi
Hydraulic pump	Double variable and 2 gear pumps
Flow rate	19.3 gal/mi
Flow rate max.	19.3 gal/mi
Tank capacity	5.0 gal US

Mechanical - Output Details

Travel speed	2.5 m/H
--------------	---------

Mechanical Details

Length	159.4 "
Width	39.0 "
Height	93.9 "
Operating weight (min.-max.)	4,420.3 - 5,568.9 lb
Digging depth (max.)	105.6 "

Engine

Cooling	Water-cooling
Engine type	Diesel engine

Cylinder	3.0
Cylinder capacity	68.1 Inch ³
Inclined position max.	30.0 °
Fuel	HVO EN15940
Effective power	18.5 hp
Nominal Engine speed	2,200.0 1/min
Exhaust-gas limit	EU Stage V
Battery capacity (nom. value)	44.0 Ah
Engine Manufacturer	Yanmar
Engine Designation	3TNV76-XNSV

Environment Data

Sound power LWA, guaranteed	93.0 dB(A)
-----------------------------	------------

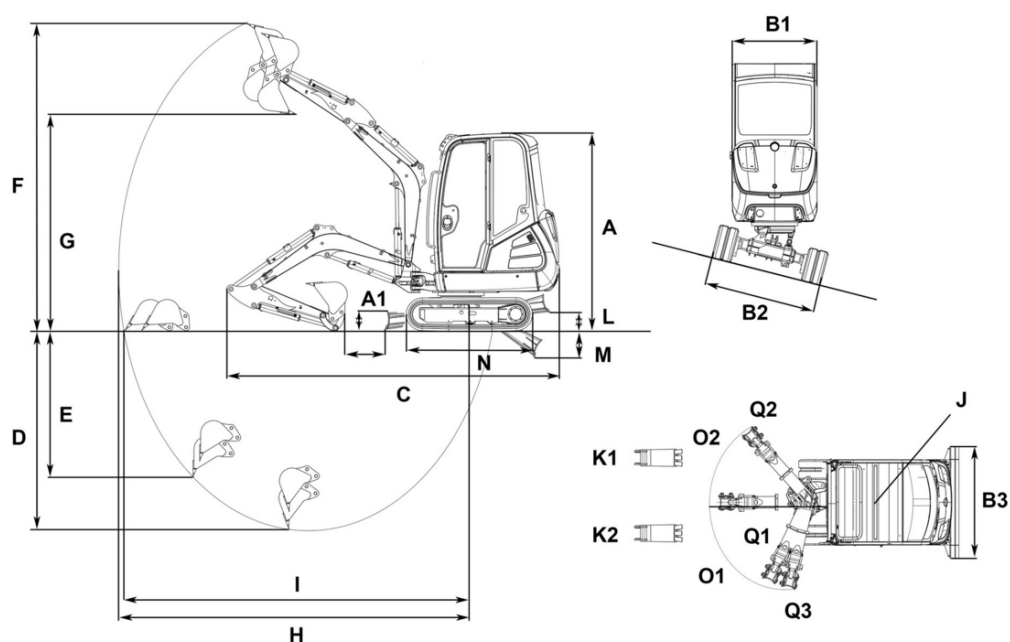
Chassis

Operating pressure	2,900.0 psi
--------------------	-------------

Shipping and Storage

Shipping weight	4,105.0 lb
-----------------	------------

Dimensions



			VDS
A	Total height with rotating beacon	97.6 in	101.3 in
B1	Width of upper carriage	38.9 in	38.9 in
B2	Width travel gear	51.2 in	51.2 in
	Width travel gear retracted	38.9 in	38.9 in
B3	Width of dozer blade	38.9 in	38.6 in
C	Transport length	159.41 in	156.9 in
D	Digging depth max., short shovel arm	97.76 in	93.2 in
	Digging depth max., long shovel arm	105.63 in	101 in
E	Piercing depth max., short shovel arm	65.35 in	61.1 in
	Piercing depth max., long shovel arm	72.64 in	68.3 in
F	Piercing height max., short shovel arm	151.02 in	153.2 in
	Piercing height max., long shovel arm	155.87 in	158 in
G	Dumping height max., short shovel arm	106.81 in	110.43 in
	Dumping height max., long shovel arm	111.65 in	115.28 in
H	Digging radius max., short shovel arm	162.56 in	161 in
	Digging radius max., long shovel arm	169.96 in	168.4 in
I	Max. reach at ground level (short shovel arm)	158.7 in	156.2 in
	Max. reach at ground level (long shovel arm)	166.34 in	165.39 in
J	Tail swing radius	46.02 in	45.6 in
K1	Boom offset max. (to center of bucket right side)	20.1 in	20.1 in
K2	Boom offset max. (to center of bucket left side)	14 in	14 in
L	Stacking height max. (dozer blade above surface)	8.5 in	10.4 in
M	Digging depth max. (dozer blade below surface)	11.7 in	10.0 in
N	Length travel drive	67.24 in	67.28 in
O1	Max. swivel angle (arm system to the left)	77 °	77 °
O2	Max. swivel angle (arm system to the right)	48 °	48 °
Q1	Boom swing radius center	65.59 in	64.9 in
Q2	Boom swing radius right	62.28 in	61.6 in
Q3	Boom swing radius left	53.39 in	52.8 in