

Telehandler



WEIDEMANN

designed for work



The compact telehandler.

Aim high with optimal stability.



Your indispensable all-rounder.

The compact Weidemann telehandlers are unique in the combination of lift height, width and machine performance. With the 4 wheel drive and all-wheel steering, you have complete stability and are well-equipped for many different tasks. Our telehandlers come well, comprehensively and robustly equipped, as standard. With our different options, you can also assemble your machine in terms of drive, tyres, hydraulics and the operator's cab so that it is completely customised to you, your business and your work tasks.

The compact telehandler.

Aim high with optimal stability.



Ergonomic working area and good all-round visibility.

All-wheel steering, low centre of gravity and excellent stability.

Ideal ratio of lift height, width, and machine performance.



Compact design with tremendous lift height.

Innovative driver assist system vls (Vertical Lift System).

Three steering modes for efficient operation of the machine.



T4512



T4512e



T6025



T7035



T7042



T9535

Exhaust emission standard, engine technology and HVO.

With Weidemann, you are well-equipped for the future!

While implementing the European emission directive for the reduction of exhaust gases and pollutants, the objective is that there be no compromise with regard to performance, service life or economic efficiency of the machines, despite stricter regulations. For the implementation of this directive, Weidemann is installing the latest engine technologies, which are equipped with various exhaust after-treatment systems.

Since the beginning of 2024, all Weidemann diesel machines are “HVO ready” and are supplied filled with HVO (Hydrotreated Vegetable Oil).

Benefits of HVO:

- Environmentally friendly and forward-thinking.
- Reduction in CO₂ emission by around 90% when compared with diesel.
- Reduction in particulate matter and emissions.
- The same performance as the conventional diesel machine.

- Weidemann machines can either be operated with 100% HVO, a mixture of HVO and diesel or continue to be completely diesel operated.

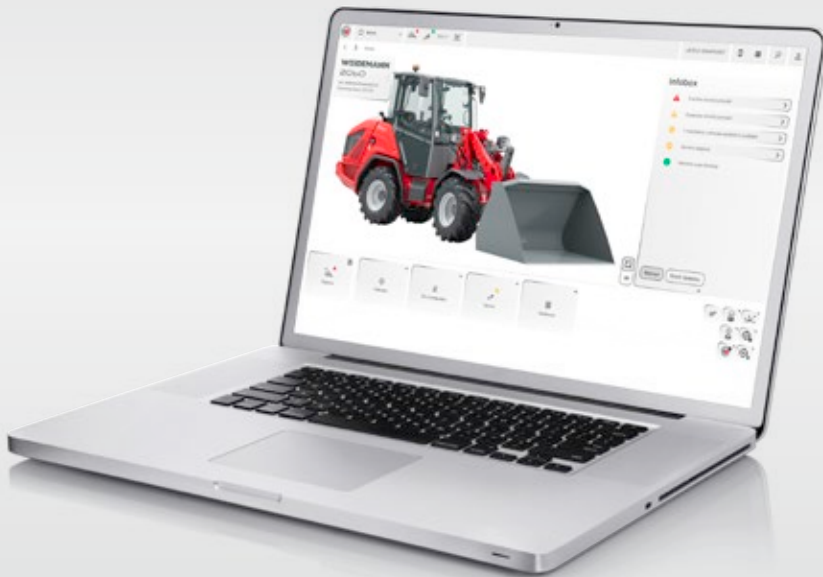


The Weidemann diagnostics and analysis systems.



With the help of the Weidemann diagnostics and analysis systems wedias or Equip Inspector, many functions can be quickly and easily assessed, including the operational function, 3rd and 4th control circuits, the engine data, as well as the electrical functions. Error messages on the display immediately notify the operator of possible failures and make a rapid response possible.

Thanks to the exact designation of the error number, the dealer can come to the machine prepared and with the right spare parts. The subsequent error analysis by trained dealers simplifies further diagnosis and troubleshooting. This saves time and money.



EquipCare.

Simply be better informed.

Modern fleet management forms a good foundation for the successful and economically beneficial application of work machinery within your operation. With our telematics solution, Weidemann EquipCare, you will be able to keep an eye on your machinery at any time and know its status, availability and usage.

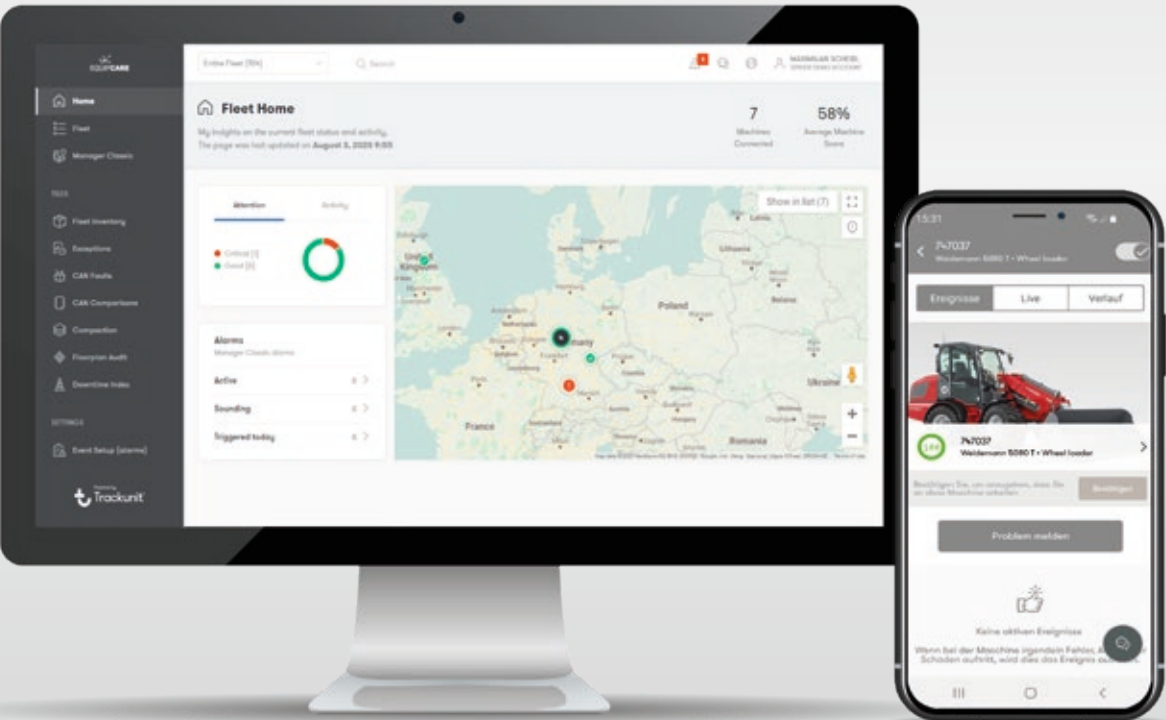
Comfortable and location-independent use is ensured via the EquipCare Manager (PC, laptop) and the EquipCare app (mobile end device).

All CAN bus-able Weidemann machines are equipped with the EquipCare module ex works. You will receive your access data promptly prior to the delivery of your machine. If you would like to equip a machine you already have with EquipCare, your sales partner will happily retrofit it for you.



EquipCare provides you with the following benefits:

- Specific information regarding the operational data of your machine (e.g. operating hours, engine capacity, travel speed, routes, etc.).
- Machine status (e.g. temperatures in the engine, cooling system and hydraulics, etc.).
- Machine fill levels (e.g. fuel, hydraulic oil, coolant, etc.).
- Improved service management with specific planning of notifications for maintenance, faults and repairs.
- Generate shorter downtimes with remote diagnoses, as the service partner already has a variety of information without having investigated the machine on site.
- Simple development of guarantee cases, as the causes of damage can be identified more easily.
- Protection against theft of the machine through geo-fencing and constant identification of location in real time. This enables better conditions with some insurers due to the tracking option.
- Improved machine running time and service life thanks to proactive communication.
- Higher resale value of used machines.
- Compatible with apps from other manufacturers: As a result, you can develop the fleet management for your whole fleet.



ecDrive (Electronic Controlled Drive).

Electronic controlled drive system.



Smarter driving and working! With the new electronic controlled drive system ecDrive (Electronic Controlled Drive), the machine can be driven and used needs-based. The electronic control reduces loss in the drive system and ensures a higher degree of efficiency when compared with existing solutions. A lower power requirement enables operation with low rpm.

Auto Mode and Eco Mode are always available as standard. Attachment Mode or M-Drive Mode can be optionally selected. This provides maximum flexibility, as the machine can be configured according to individual needs.

- **Auto Mode:**
The Auto Mode ensures the usual 100% performance of the machine. The full output and performance is available at any time.
- **Eco Mode:**
With Eco Mode, the rpm decreases after the desired vehicle speed is reached so that it is possible to achieve both a reduction in noise and save fuel. Eco Mode enables comfortable and resource-protecting driving, above all on longer journeys.

- **Attachment Mode:**
The Attachment Mode perfectly supports the application of hydraulic attachments. In the Attachment Mode the machine's diesel engine and the attachment are always optimally utilised to capacity. In the Attachment Mode, the machine controls the travel speed depending on the load. This ensures for maximum productivity and the best-possible work result. The operator is relieved and is able to work with the machine for a long time fatigue-free.
- **M-Drive Mode:**
M-Drive Mode corresponds to an accelerator mode. As a result, the hand throttle sets the diesel engine's rpm and the accelerator becomes the throttle pedal. In M-Drive Mode, the desired rpm is always achieved, inching is therefore superfluous. This makes it possible to work comfortably with hydraulically-operated attachments, likewise enabling the efficient material handling with very short routes.

The electronic controlled drive ecDrive (Electronic Controlled Drive) is available for the T4512 and T6025.

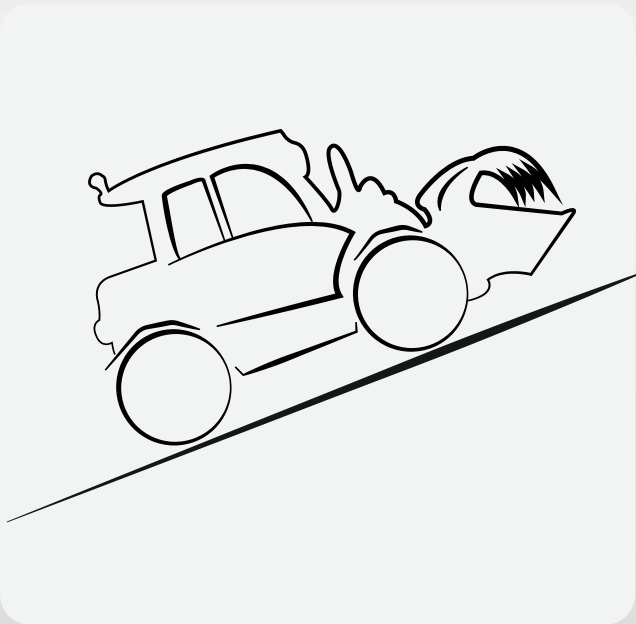


Power Drive.

Variable hydrostatic transmission.



- The drive system Power Drive is a variable hydrostatic transmission, which achieves higher traction forces and travel speeds than solutions developed to date. This is achieved while maintaining all of the benefits of drive systems to date in relation to compactness, energy efficiency and operator comfort.
- With the Power Drive, operators are able to accelerate up to speeds of 40 km/h without changing gear or running mode. This makes a comfortable driving manner possible, as there are no interruption in the traction.
- The Power Drive transmission is available for T6025 (35 km/h), T7035, T7042 and T9535 (all 40 km/h).



Electric Parking Brake (T4512).
The electric parking brake provides both an auto-hold as well as hill-hold function. The brake automatically activates if the machine stands still, the direction of travels is set to neutral or the operator leaves the seat. Likewise, the parking brake is automatically released if the machine is put into gear using the accelerator. Naturally, the brake can likewise be manually activated and deactivated by operating a switch.

The driver assist system vls (Vertical Lift System).

Certainly a better work flow.

Driver assistance system vls (Vertical Lift System).

The vls (Vertical Lift System) is installed in all Weidemann telehandlers. It makes a fluid working principle possible and, through a partially automated telescoping movement, supports the work in a complex operating environment. Due to the nearly vertical lifting or lowering movement, the stability of the machine is improved.

The operator has the following vls modes available:

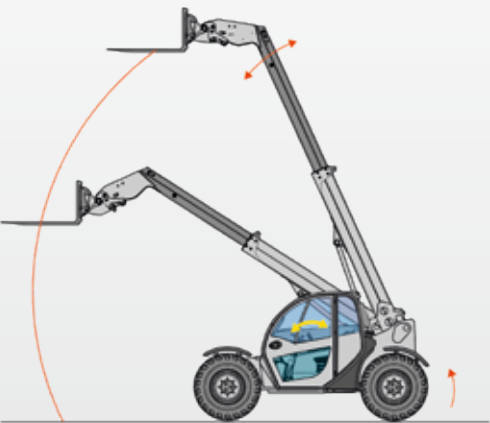
- 1. Bucket mode: e.g. loading work with bulk material.
- 2. Stacking mode: e.g. stacking round bales.
- 3. Manual mode (only available for the T4512): the system is deactivated when the arm is fully retracted. But the safety switch-off remains active. This means, for example, that pushing work can be done without system intervention.



When lifting, the telescopic arm automatically extends in the upper range only if the stacking mode is switched on. When lowering, the telescopic arm automatically retracts in the upper range if the stacking mode and bucket mode are switched on. This guarantees that the load always remains close to the machine and stability is always guaranteed.

The fluid working principle, the avoidance of a reduced lowering speed for safety reasons and the easier machine operation increase the machine's handling performance. Experienced operators can work even faster and safer with the vls. Inexperienced operators receive valuable support for lifting and loading work.

Without vls. The machine reaches the tilting limit when simply lowering.



With vls. Nearly vertical movement. Hardly any load torque displacement in the longitudinal direction of the machine.



— Operating parameter — Response of the loading system



The vls has received multiple international awards:

Agritechnica
innovation award 2011, silver
Germany



eima
innovation award 2012
Italy



Equitana
innovation award 2013
Germany



The basic Weidemann virtues.

Agile, multi-functional, and suitable for all terrains.



Compact machines with a high level of manoeuvrability.

The all-rounder for any application location. All telehandlers of our line of products have particularly small inner radius. Especially when things become tight, e.g. work in stables or storage areas, our telehandlers feature small radius and optimum manoeuvrability. All-rounder for any application location.



All-wheel steering, low centre of gravity and excellent stability.

Thanks to the all-wheel steering and the undivided frame, Weidemann telehandlers are particularly manoeuvrable and very stable. The low centre of gravity of the machine also increases the stability.



Variety in the outfitting.

Weidemann machines have extensive and high-quality standard equipment. Depending on application and model e.g. the engine, drive, operator's cab and hydraulics can be individually configured. It is always guaranteed that the machine will satisfy individual demands and preferences.



A multi-tool for various applications.
Whether for transporting, feeding, mucking, sweeping or stacking: Thanks to the enormous variety of various attachments, your Weidemann telehandler becomes a universal multi-tool. You can find more about this on pages 28–29.



Efficient change of attachments.

Thanks to the hydraulic quickhitch system, attachments can be readily exchanged. In this way, your machine is again ready for application at once. This increases productivity and profitability.



Changing attachments with additional function made easy!

With the Weidemann ecs (Easy Coupler System), hydraulically-driven attachments can be easily and completely swapped from the operator's seat (available for T4512/ T4512e). The operator does not need to step out of the machine to manually connect the hydraulic couplings. This increases safety for the operator, protects the environment because less oil drips onto the ground and also presents a significant time-saving.

Economic efficiency that's worth it.

Efficient work operation thanks to reliable technology.

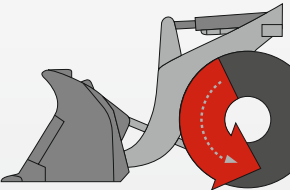


Work economically.

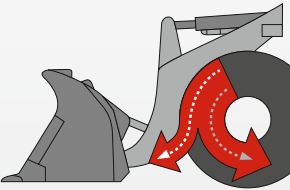
Economic efficiency is one of the most important features that machines should bring to an efficient application. The faster and more time-saving a machine can manoeuvre, the higher its performance. For Weidemann machines, economy above all means technically-sophisticated solution, such as powerful drive system, strong ripping forces, powerful kinematics, high level of manoeuvrability, excellent stability and an efficient quickhitch system for attachments.

Connectible 100% differential lock.

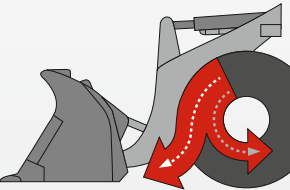
When compared with a self-locking differential, the connectible 100% differential lock ensures, where needed, maximum traction and thrust, and reduces the tyre wear. This increases the efficiency of your machine. In normal operation, the differential lock is deactivated, which provides safety, less tyre wear and therefore saves on operating costs.



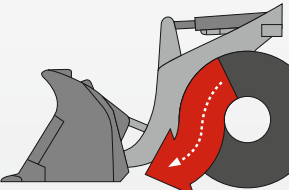
1. No pressure on the inch-brake pedal: full power for the drive.



2. Slight pressure on the inch-brake pedal: The pace is reduced, more power into the work hydraulics.



3. More pressure on the inch-brake pedal: The pace is reduced further, even more power into the work hydraulics.



4. Inch-brake pedal is fully engaged: The machine is stationary, full power into the work hydraulics.

The benefits of the inch-brake pedal: Less wear to the operating system, as well as optimal performance distribution of the engine output.



Optimum ease of servicing.

The engine hood can be opened with just one handle for regular service and maintenance jobs. Hydraulic oil tank, air filter, engine oil filling, oil dipper stick and coolant are therefore quickly and easily accessible.

Easy transport.

Save time and transport costs: thanks to the compact dimensions and low weight, the T4512/T4512e can be easily transported on a car trailer. As a result, the machine can be efficiently moved from A to B.



High level of operating and driving comfort.

Optimal visibility and good working environment.



Good all-round visibility.

The cab provides an excellent overview of the attachments, the immediate working area, and the entire machine surroundings. In combination with the sloping engine hood, the low side window on the right-hand side and the high seat position ensure an optimal view. This increases safety across the machine's entire work area.



Comfortable operator's seat.

The operator's seat is adjustable, ergonomically formed, and well suspended. The optionally available air-sprung comfort seat provides even more comfortable conditions. The seat is heated for working in cold conditions.



Ventilation as required.

The cab has large, wide-opening doors on the left-hand side. Depending on the cabin type, the upper window can be opened completely and locked. Gap ventilation is likewise possible. The rear windscreen can be opened - this ensures for a pleasant temperature and maximum flexibility.



Comfortable working environment.

An excellent working environment thanks to an efficiently working heating and ventilation system featuring a blower, fresh air filter, and well-placed air nozzles. We recommend using an air-conditioning system in particularly warm environments.

Three types of steering for maximum flexibility.



All-wheel steering.

Full manoeuvrability and power development in the smallest area.



Front wheel steering.

For safe driving, even at higher speeds.



Crab steering.

Sideways driving for ultra-precise manoeuvring in tight spaces, such as for shift work on walls.

A motivating working area.

Ergonomically arranged operating controls and simple handling.



Jog Dial and hydraulic oil volume adjustment.
The Jog Dial control element enables the operation and selection of different machine parameters and functions using the display (not for T4512/T4512e).

The variable adjustment of the oil volume of the 3rd control circuit enables the use of attachments, which are operated with hydraulic continuous function. With this the oil volume can be individually adapted to the respective attachment. The operator can therefore work precisely and in a resource-saving manner with the machine and attachment.



Ergonomic joystick.
The joystick lies securely and comfortably in the hand. Control is therefore direct and sensitive at the same time. The operator therefore always has the machine and its key functions under control. Alongside the standard functions, like the travel direction selection and speed stage, many other functions can be operated via the joystick depending on the model, for instance differential lock, 3rd control circuit and all electrical functions.



Good illumination of the working area.
The lighting can be adapted to various requirements. Depending on the model there are various lighting packs available. Good illumination of the working area increases work safety and allows the operator to work with concentration over a longer period of time and to work safely with the machine.



Easy entry and exit.
With just a few steps, the operator can comfortably get into the machine's cabin. This is made possible by the large and anti-slip steps, and the easy-to-reach handles. This increases the operator's safety when entering and exiting the vehicle.



Pressure release of 3rd control circuit.
The button to release the pressure is easily accessible from the outside on the telescopic arm. Different hydraulically operated attachments can therefore be replaced faster and more efficiently. This works even with the engine running.



Reversing fan.
Dirt is blown out of the cooling fins and onto the engine bonnet's inlet areas at the press of a button. The fan propeller is hydraulically driven, the airflow of the fan can therefore be reversed (reverse option). This protects the machine against damage from overheating and avoids additional manual maintenance efforts.



Suitable for trailer operation.
(Availability different depending on model and country). Various optional trailer couplings are available depending on the model: from a simple shunting coupler to a semi-automatic to an auto-hitch coupling. The option to tow a trailer expands the machine's range of application and provides more flexibility, as no additional towing vehicle is required.



Automatic bucket return and vibratory function (T6025).
Operation of the automatic bucket return system is ergonomically positioned on the joystick and the position of the tipping cylinder is stored with just one press of a button. During the next loading process, the attachment can be returned to exactly the same position. An advantage in terms of comfort, precision and speed for the operator for repetitive work, such as stacking or filling containers at a fixed height or over high sides.

At the press of a button, the vibratory function is activated and the bucket is automatically, quickly moved back and forth multiple times. This makes it easier to tip out bulk material, which often remains stuck in the bucket.

Best View Cabin.

A completely new work experience awaits you!



The unique and revolutionary Best View Cabin provides guaranteed perfect all-round visibility. With our T7035, T7042 and T9535 telehandlers, the cabins only have four pillars installed. When combined with the panoramic windscreen, the operator has a perfect view to the rear. In addition to this, the sloped engine bonnet provides an ideal view to the side and to the rear onto the right, rear wheel. These telehandlers leave nothing to be desired in terms of work-ergonomics. A cab that has been designed with the operating philosophy Operator First and has been developed according to the latest findings in safety technology and ergonomics.



Our revolutionary Best View Cabin provides guaranteed perfect all-round visibility.

- Unique 4-pillar design and panoramic rear windscreen for incomparable all-round visibility.
- Large, curved front windscreen provides an excellent view of the attachment and loading with the telescopic arm in any position.
- Sloped engine bonnet provides an ideal view to the side and to the rear onto the right, rear wheel.
- The view-optimised FOPS grate provides the highest degree of safety without restricting the view.



Our philosophy - Operator First.

- The operator cabin has been ideally implemented according to ergonomic points of view.
- With the 7" display, the operator has an overview of all the important machines.
- Multi-functional joystick with many functions - everything at hand with just one hand.
- A high-quality seat (air-sprung optional) as well as an adjustable steering wheel in height and inclines enable safe and comfortable working conditions.
- Electronic controlled drive system with Auto, Eco and M-Drive Modes.
- Everything within reach: radio, USB connection, mobile phone holder, drink holder and diverse storage compartments.
- Optionally available is also a large and lockable toolbox, accessible from the outside.
- Cabin suspension with hydro-mounts ideally protect the operator from vibrations and impact.
- Comfortable entry with anti-slip, well exposed steps ensure safety when entering and exiting the vehicle.
- Coming Home lighting increases safety in the dark.



Intuitive operating concept.

All control elements within the cabin have been organised clearly and are in easy-to-reach positions. The panel with the most important switches and the joystick is mounted firmly to the seat and is sprung. The colour-guided operating concept enables intuitive orientation by the operator, with specific colours being assigned to individual function groups (switches).



Comfortable working environment.

Thanks to the efficient ventilation and heating system, and the thought-out ventilation concept, you will always have a comfortable working environment. The fresh-air filter and the well-placed air nozzles ensure fresh air in the cabin. Additionally, the side windows and the rear windscreen can be easily opened.



Climate control system and automatic climate control.

An air-conditioning system or automatic air-conditioning are optionally available. They ensure a comfortable working environment inside the cabin, even during warm ambient temperatures, and therefore increase comfort for the operator.

THINK ELECTRIC

T4512e



Electric, emission-free and still innovative.

CO₂ exhaust emission, noise and soot particles in buildings - a thing of the past! With our electric T4512e telehandler, you can work on-site completely emission-free with a clear reduction in noise. This protects the operator and the valuable livestock in equal measure. And even the neighbours will rejoice over such a machine on your farm!

Weidemann already has an element of tradition when it comes to this matter: Already in 2015, we were successfully producing the electrically-driven Hoftracs® in series. Many of our customers consciously chose the aforementioned advantages and would not do without these machines in their day-to-day work.

The lithium-ion battery is available in two power outputs so that the running and charging times can be optimally coordinated with your working requirements.

The T4512e is award-winning:

Equitana
Innovation Award 2023
Germany



Low operating costs.

The running energy costs in case of a machine with diesel drive are considerably higher than in case of an electrically driven machine. The higher procurement costs of the eMachine are amortised after some time, this therefore represents a more economical investment throughout the period of use.

Always the right running time.

Depending on the size of the battery, it is possible to achieve a running time of up to 5.2 hr during uninterrupted operation. The running times of the battery are dependent on the respective application conditions, the work task and the manner of driving. This can also mean that a significantly longer running time can also be achieved.



Simple charging options.

The charging cover is easily accessible at the rear of the machine. Behind this, you will find the socket, the activation switch and the charge indicator. The charging cable (Type 2 plug on the machine side, familiar from the automotive sector) and control box come with a number of different plugs: 230 V / 10 A Schuko, 230 V / 16 A CEE (blue, 3-pole), 400 V / 16 A CEE (red, three-phase current, 5-pole), 400 V / 16 A (Type 2 plug Wallbox, IEC 62196) and other adapter plugs. Overall, the flexible charging system offers you an efficient and safe charging procedure.



Battery Management System (BMS).

The lithium-ion battery is optimally monitored by the applied electronic system. The BMS also enables clearly increased charging currents, a short-term provision of performance peaks and permanent monitoring of the temperature. Also, the battery is always pre-warmed to the optimal operating temperature. The BMS thus increases the efficiency and safety of the battery and excludes the possibility of deep discharge.





Efficient attachment application.

The variable adjustment of the oil volume of the 3rd control circuit enables the use of attachments, which are operated with hydraulic continuous function. With this the oil volume can be individually adapted to the respective attachment. This enables comfortable and efficient working conditions for the operator with the machine and the attachment. Additionally, the machine can also be used in stationary operation. The work hydraulics of the 3rd control circuit are used here to drive an attachment like a log splitter, for example.



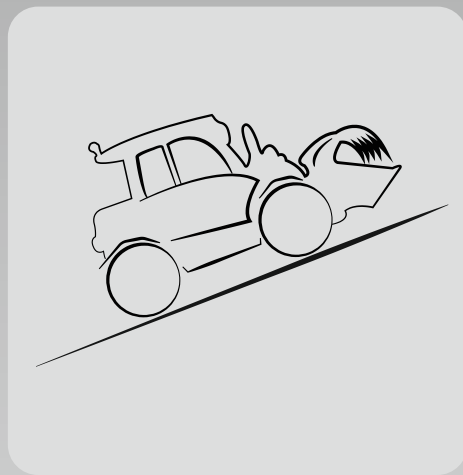
Powerful lithium-ion battery.

You can select the appropriate battery size depending on your field of application and purpose. There are two maintenance-free lithium-ion batteries to choose from. A 3 kW on-board charger is installed as standard. Optionally, a second 3 kW on-board charger can be selected to increase the charging performance to a total of 6 kW, which is suitable to achieve a fast charging time for the large battery.



Needs-based performance.

Two separate electric motors are used in the machine: one for the drive and one for the drive system of the work hydraulics. This minimises the power consumption, because the performance is only drawn when it is really needed. The electric motor for the drive also allows a dynamic and powerful start-up of the machine. This can be felt in every acceleration process.



Electric parking brake.

The electric parking brake provides both an auto-hold as well as hill-hold function. The brake automatically activates if the machine stands still, the direction of travel is set to neutral or the operator leaves the seat. Likewise, the parking brake is automatically released if the machine is put into gear using the accelerator. Naturally, the brake can likewise be manually activated and deactivated by operating a switch. Also, the brake system enables gaining back the so-called recuperation energy, which also extends the machine's running time.



Simple maintenance.

A great benefit to an electrically-powered machine is that there are significantly fewer maintenance works required than with a diesel-engine machine. The engine bonnet can be opened upwards and the operator's seat an diverse access panel can be removed in just a few steps. This makes it possible to easily access the hydraulic control block, the pumps, the battery and the electric motors. As a result, simple and time-saving maintenance of the machine is guaranteed.

Optimal cabin.

The cabin of the T4512e enables comfortable all-year round use of the machine, e.g. even for winter service. It has been optimised to the needs of the operator, provides many features and enables safe and comfortable working conditions:

- Despite its compact design, there is sufficient space for the operator.
- Deep-drawn windows and a flat, sloping engine bonnet ensure the best all-round visibility.
- Electrically heated front windscreen, right-side window and rear windscreen for optimal visibility in any weather.
- Good ventilation, even without air-conditioning: Wide-opening door, window lockable to the rear, gap ventilation possible, opening rear windscreen.
- Easy entry and exit thanks to compact design.
- Multi-functional joystick: all important functions in one hand.
- Well thought-out heating concept for all requirements: powerful heating and ventilation system, additional optional roof heating panel and heated seat.
- Emergency switch provides high level of safety.
- Colour-oriented heating concept and ergonomically designed display enable safe and comfortable working conditions.
- DAB+ radio, adjustable steering wheel (height and incline), comfortable operator's seat (heated seat / air-sprung).





Our quality promise.

Weidemann „Made in Germany“.

At Weidemann, quality is not an empty promise, but a day-to-day reality. A true Weidemann comes from one of the most modern wheel and telehandler production facilities in Europe. The plant in Korbach guarantees a consistently high quality of our products. At Weidemann, quality begins early on because compliance with defined processes is taken seriously. Purchased parts supplied to production are continually monitored, tested, and optimised in co-operation with suppliers.

Powder-coating.

The powder-coating is another key feature of the special quality standard at Weidemann. This guarantees optimum protection against corrosion. In comparison to conventional wet painting, powder-coating greatly extends the service life of the machine. It is also more efficient and environmentally friendly.



Careful final inspection.

Every Weidemann that leaves our factory is subjected to a careful final inspection. This guarantees our customers a long service life and low operating costs from the onset. The Weidemann label means quality.

Certified management system.

Weidemann is certified to different standards:

DIN EN ISO 9001 Quality management

Our processes are designed in such a way that our product and service quality fulfils both the customer requirements and the requirements of the laws and standards.

DIN EN ISO 14001 Environment management

Our processes and activities work with the environment. They are illustrated in a management system and are subject to constant review and improvement.

DIN EN ISO 50001 Energy management

Determination of energy consumption within the Weidemann organisation is continuously recorded and always optimised through a company-wide energy efficiency system.



Weidemann telehandler.

Versatility that convinces.

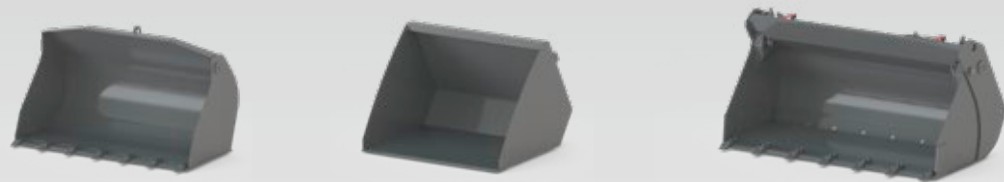


The optimal attachment for every task.

Your machine becomes a multi-tool.

Only the right attachment turns our machines into true problem solvers for your respective work task. With the richly varied and well thought-out product range, our machines become highly functional multi-tools that fulfil any application purpose. View a selection of attachments and activities here, which can easily be completed with them.

Material Handling



Gripping



Grab fork



Stacking and Transporting



Cleaning



Mowing and mulching



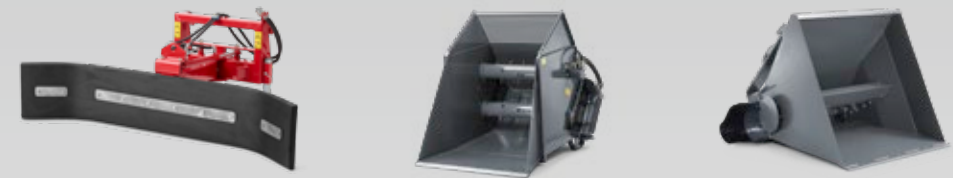
Trimming trees and hedges



Winter services



Feed handling



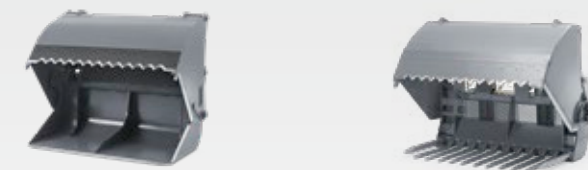
Bale handling



Stable work



Silage handling



Equestrian business



You can find all ex works attachments at: www.weidemann.com

You can obtain more information from your Weidemann distributor.

Technical data.

| | T4512 | | T6025 | | T7035 | T7042 | T9535 |
|---|---------------------------------------|-----------|---------------------------------------|------------|-----------------------------------|-----------------------------------|-----------------------------------|
| | Standard | option | Standard | option | | | |
| ENGINE DATA | | | | | | | |
| Engine manufacturer | Yanmar | Yanmar | Perkins | Perkins | Perkins | Perkins | Perkins |
| Engine type | 3TNV80FT | 3TNV86CHT | 404J-E22T | 404J-E22TA | 904J-E36TA | 904J-E36TA | 904J-E36TA |
| Cylinders | 3 | 3 | 4 | 4 | 4 | 4 | 4 |
| Engine output kW | 18.4 | 33.3 | 45 | 55 | 100 | 100 | 100 |
| Engine output hp | 25 | 45.3 | 61 | 75 | 136 | 136 | 136 |
| At max. speed rpm | 2,600 | 2,600 | 2,400 | 2,400 | 2,200 | 2,200 | 2,200 |
| Displacement cm³ | 1,226 | 1,568 | 2,216 | 2,216 | 3,621 | 3,621 | 3,621 |
| Type of coolant | Water | Water | Water | Water | Water | Water | Water |
| Emissions standard level | V | V | V | V | V | V | V |
| Exhaust emissions after-treatment | – | DOC/DPF | DOC/DPF | DOC/DPF | DOC/DPF/SCR | DOC/DPF/SCR | DOC/DPF/SCR |
| ELECTRICAL SYSTEM | | | | | | | |
| Operating voltage V | 12 | | 12 | | 12 | 12 | 12 |
| Battery Ah | 77 | | 77 | | 185 | 185 | 185 |
| Alternator A | 80 | | 120 | | 150 | 150 | 150 |
| WEIGHTS | | | | | | | |
| Operating weight kg | 2,750 - 2,900 | | 4,650 | | 7,250 | 7,650 | 7,720 |
| Payload kg | 1,250 | | 2,500 | | 3,500 | 4,200 | 3,500 |
| OPERATOR'S CABIN | | | | | | | |
| Operator's cab | Cabin | | Cabin | | Cabin | Cabin | Cabin |
| FILLING VOLUMES | | | | | | | |
| Tank volume for fuel l | 33 | | 95 | | 142 | 142 | 142 |
| Hydraulic oil tank capacity l | 36 | | 29 | | 90 | 90 | 90 |
| Tank volume for urea solution l | – | | – | | 19 | 19 | 19 |
| DRIVE SYSTEM | | | | | | | |
| Type of drive | ecDrive (Electronic Controlled Drive) | | ecDrive (Electronic Controlled Drive) | | electronically controlled | electronically controlled | electronically controlled |
| Drive | Hydrostatic/universal joint shaft | | Hydrostatic/universal joint shaft | | Hydrostatic/universal joint shaft | Hydrostatic/universal joint shaft | Hydrostatic/universal joint shaft |
| Axle | PAL 1155 | | PAL 1660 | | PAL 1930 | PAL 1930 | PAL 1930 |
| Driving speed (optional) km/h | 0-20 (30) | | 0-20 (25, 35) | | 0-20 (30, 40) | 0-20 (30, 40) | 0-20 (30, 40) |
| HYDRAULIC SYSTEM | | | | | | | |
| Working pressure drive hydraulics (max.) (optional) bar | 380 | | 470 | | 500 | 500 | 500 |
| Discharge volume working hydraulics (max.) (optional) l/min | 36.4 (41.6-70) | | 75 | | 138.6 (187) | 138.6 (187) | 138.6 (187) |
| Working pressure working hydraulics (max.) (optional) bar | 220 | | 250 | | 261 | 261 | 261 |
| NOISE CHARACTERISTIC VALUES | | | | | | | |
| Averaged sound power level LwA dB (A) | 99.5 | 101.2 | 102.5 | 102.5 | 105 | 105 | 105 |
| Guaranteed sound power level LwA dB (A) | 101 | 103 | 104 | 104 | 106 | 106 | 106 |
| Specified sound pressure level LpA dB (A) | 84 | 84 | 79 | 79 | 76 | 76 | 76 |

DPF = diesel particle filter
DOC = Diesel oxidation catalyst
SCR = Selective Catalytic Reduction

The current noise characteristic value can be found at www.weidemann.com

There may be short-term changes in the engines because of the constantly evolving emission standards. For current availabilities, you can contact your Weidemann distributor. More information can be found at www.weidemann.com

This brochure is for general product information. If you are interested, one of our distributors would be happy to send you an offer. The descriptions, illustrations and technical data are not binding and do not necessarily represent the standard design. We reserve the right to make changes. Despite the greatest care and diligence applied, we cannot rule out deviations from the images or measures, errors in calculation, misprints or omissions in this brochure. We therefore assume no liability for the accuracy and completeness of our information in this brochure.

Technical data.

| BATTERY | |
|--|--|
| Battery technology | |
| Battery voltage class V | |
| | |
| Battery capacity kWh | |
| Battery weight kg | |
| Charging time (0-100%) h | |
| Charging time (20-80%) h | |
| Running time up to h | |
| ELECTRIC MOTOR | |
| | |
| Engine drive system kW | |
| Engine work hydraulics kW | |
| ELECTRICAL SYSTEM | |
| Operating voltage V | |
| WEIGHTS | |
| Operating weight kg | |
| Payload kg | |
| OPERATOR'S CABIN | |
| Operator's cab | |
| FILLING VOLUMES | |
| Hydraulic oil tank capacity l | |
| DRIVE SYSTEM | |
| Type of drive | |
| Drive | |
| Axle | |
| Driving speed (optional) km/h | |
| HYDRAULIC SYSTEM | |
| Work hydraulics flow rate (max.) l/min | |
| Working pressure working hydraulics (max.) bar | |
| NOISE CHARACTERISTIC VALUES | |
| Averaged sound power level LwA dB (A) | |
| Guaranteed sound power level LwA dB (A) | |
| Specified sound pressure level LpA dB (A) | |

* The charging time depends on the different charging options. On-board battery charger 3 kW (standard), with additional on-board charger overall 6 kW (option). The following charger plugs are available: 230 V / 16 A Schuko, 230 V / 16 A CEE (blue, 3-pole), 400 V / 16 A CEE (red, three-phase current, 5-pole), 400 V / 16 A (Type 2 plug Wallbox, IEC 62196) and other adapter plugs.

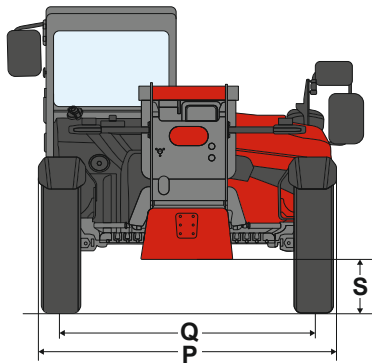
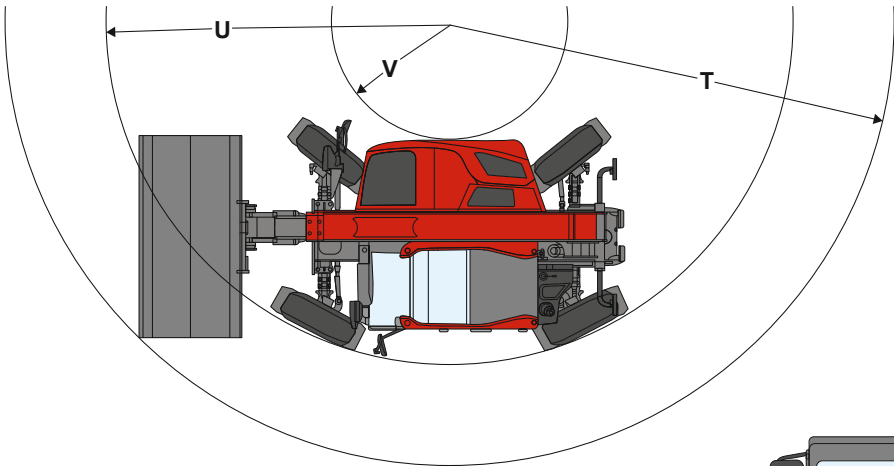
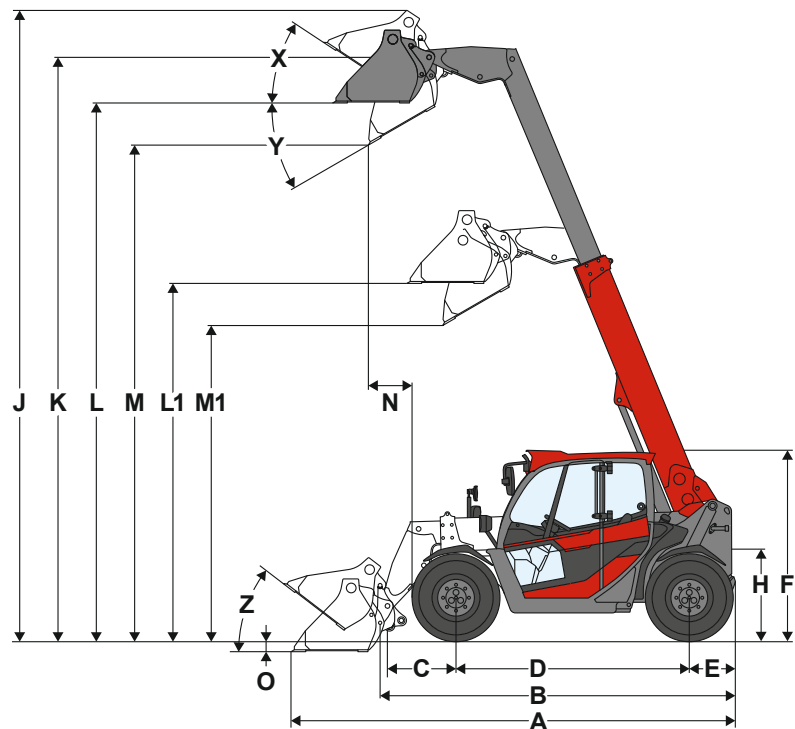
** The running times of the battery are dependent on the respective application conditions, the work task and the driving style. This can also mean that a longer running time can also be achieved. The specified running times can also be fallen short of in extreme cases. The specified running times relate to uninterrupted operation and work with the machine.

*** With optional equipment.

| T4512e | | |
|-----------------------|--|------------------|
| Lithium-ions | | |
| 96 | | |
| Standard battery | | Optional battery |
| 18.0 | | 28.0 |
| 186 | | 244 |
| 3.2 - 7.5* | | 5.5 - 11.5* |
| 1.8* | | 2.7* |
| 3.1** | | 5.2** |
| ECE R085 | | |
| 33.1 | | |
| 21.2 | | |
| 12 | | |
| 2,750 - 3,100*** | | |
| 1,250 | | |
| Cabin | | |
| 36 | | |
| Electrical | | |
| Universal joint shaft | | |
| PAL1165 | | |
| 0-15 (20, 25) | | |
| 41.6 | | |
| 220 | | |
| 85.7 | | |
| 87 | | |
| 73 | | |



Dimensions.



T4512

T4512e

T6025

T7035

T7042

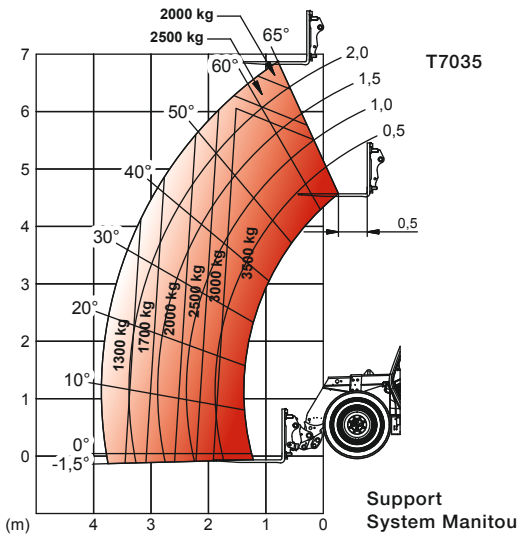
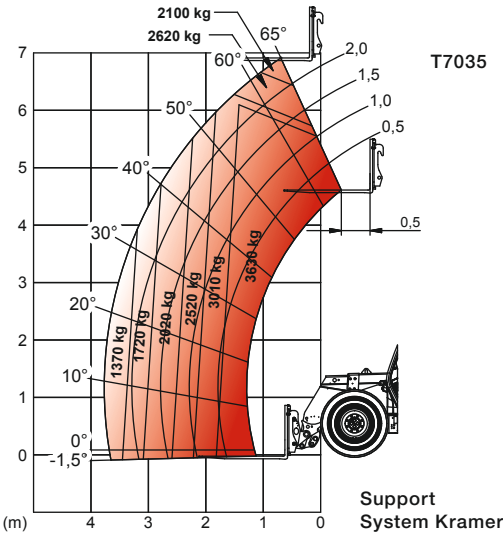
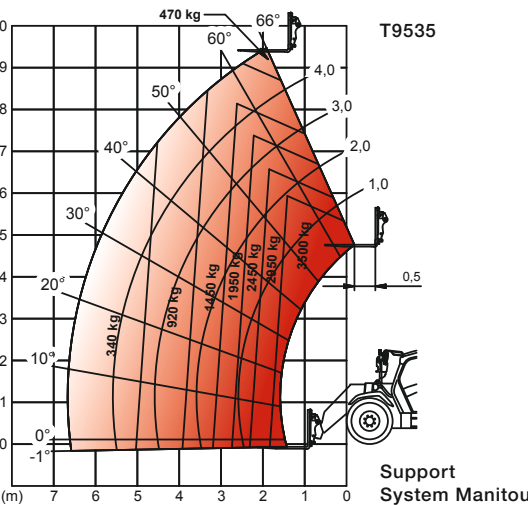
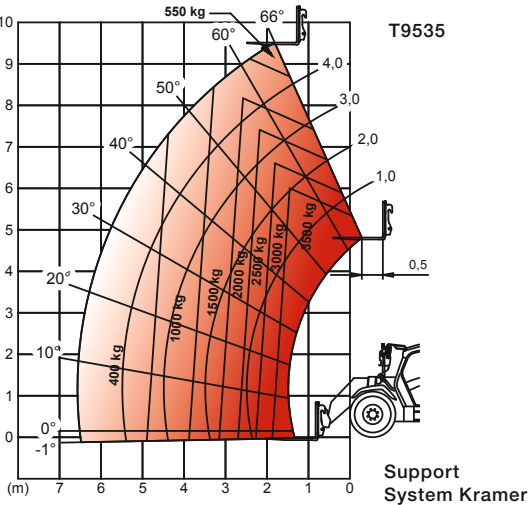
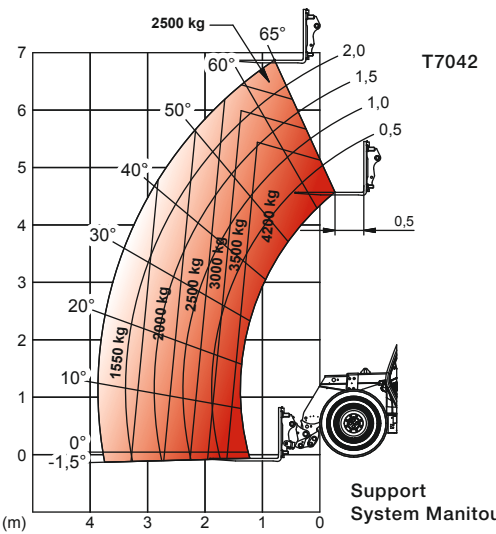
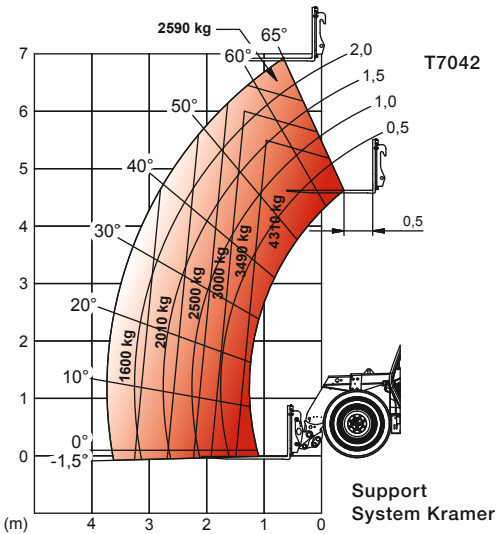
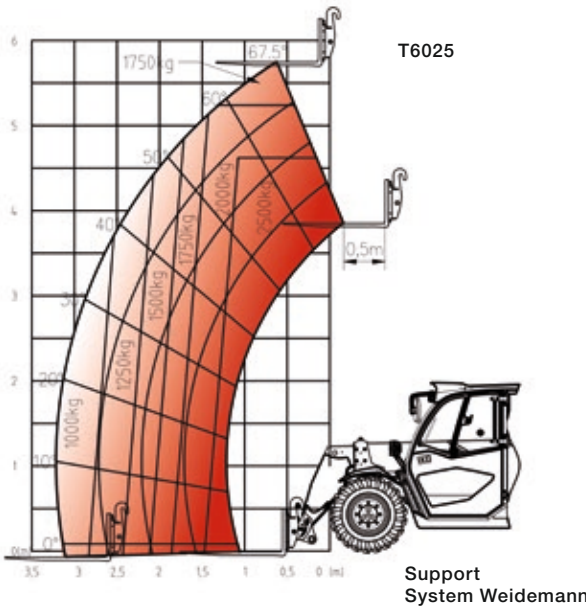
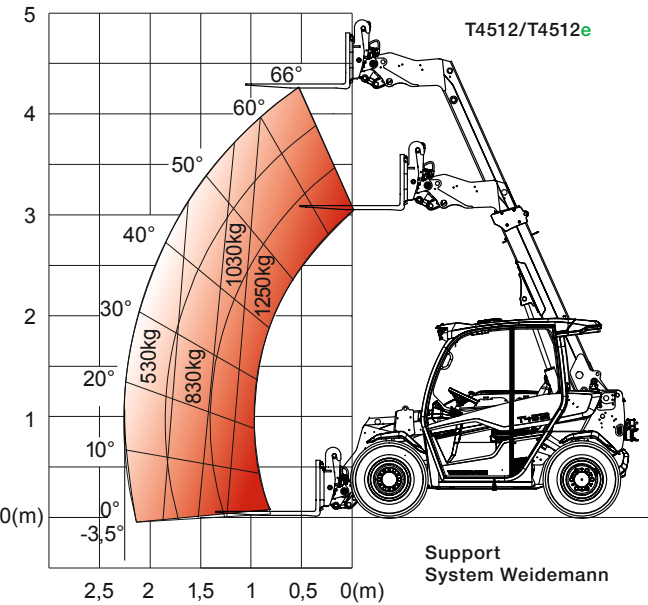
T9535

| DIMENSIONS | |
|---|--|
| Tyres | |
| A Total length mm | |
| B Total length without bucket mm | |
| C Bucket pivot point (to centre of axle) mm | |
| D Wheel base mm | |
| E Rear overhang mm | |
| F Height with cab mm | |
| H Seat height mm | |
| J Total working height mm | |
| K Bucket pivot point (max. lifting height) mm | |
| L1 Overhead loading height of retracted telescopic arm mm | |
| L Overhead loading height of extended telescopic arm mm | |
| M1 Dumping height of retracted telescopic arm mm | |
| M Dumping height of extended telescopic arm mm | |
| N Coverage (with M) mm | |
| O Digging depth mm | |
| P Total width mm | |
| Q Track width mm | |
| S Ground clearance mm | |
| T Maximum external radius mm | |
| U Radius on outer edge mm | |
| V Inner radius mm | |
| X Rollback angle at max. lift height ° | |
| Y Tipping angle at max. lift height ° | |
| Z Rollback angle on the ground ° | |

| | | | | | |
|------------------------------|------------------------------|--------------------------|------------------------------|------------------------|------------------------|
| 10.0/75-15.3 AS ET-40 Starco | 10.0/75-15.3 AS ET-40 Starco | 10.5/80 - 18 BKT AS ET17 | Alliance 405/70-24 152B A323 | Mitas 405/70 24 MPT-01 | Mitas 405/70 24 MPT-01 |
| 3,944 | 3,944 | 4,665 | 6,035 | 6,035 | 6,275 |
| 2,991 | 2,991 | 3,887 | 4,950 | 4,950 | 5,290 |
| 450 | 450 | 720 | 871 | 871 | 1,050 |
| 1,922 | 1,922 | 2,449 | 2,950 | 2,950 | 2,950 |
| 427 | 427 | 487 | 700-940 | 700-940 | 700-940 |
| 1,995 | 1,995 | 1,995 | 2,425 | 2,425 | 2,425 |
| 978 | 983 | 957 | 1,370 | 1,370 | 1,370 |
| 5,280 | 5,280 | 6,618 | 7,895 | 7,895 | 10,450 |
| 4,537 | 4,537 | 6,123 | 7,305 | 7,305 | 9,855 |
| 2,949 | 2,949 | 3,747 | 4,470 | 4,470 | 4,650 |
| 4,163 | 4,163 | 5,642 | 6,770 | 6,770 | 9,305 |
| 2,415 | 2,415 | 3,307 | 3,930 | 3,930 | 4,135 |
| 3,630 | 3,630 | 5,201 | 6,230 | 6,230 | 8,785 |
| 557 | 557 | 454 | 129 | 129 | 1,194 |
| 91 | 91 | 121 | 185 | 185 | 185 |
| 1,564 | 1,564 | 1,900 | 2,450 | 2,450 | 2,450 |
| 1,245 | 1,245 | 1,660 | 1,930 | 1,930 | 1,930 |
| 294 | 233 | 285 | 370 | 370 | 370 |
| 3,506 | 3,506 | 4,337 | 5,155 | 5,155 | 5,155 |
| 2,695 | 2,695 | 3,347 | 3,700 | 3,700 | 3,700 |
| 951 | 951 | 1,161 | 1,640 | 1,640 | 1,640 |
| 52 | 52 | 34 | 45 | 45 | 111 |
| 31 | 31 | 30 | 44 | 44 | 44 |
| 44 | 44 | 38 | 46 | 46 | 46 |

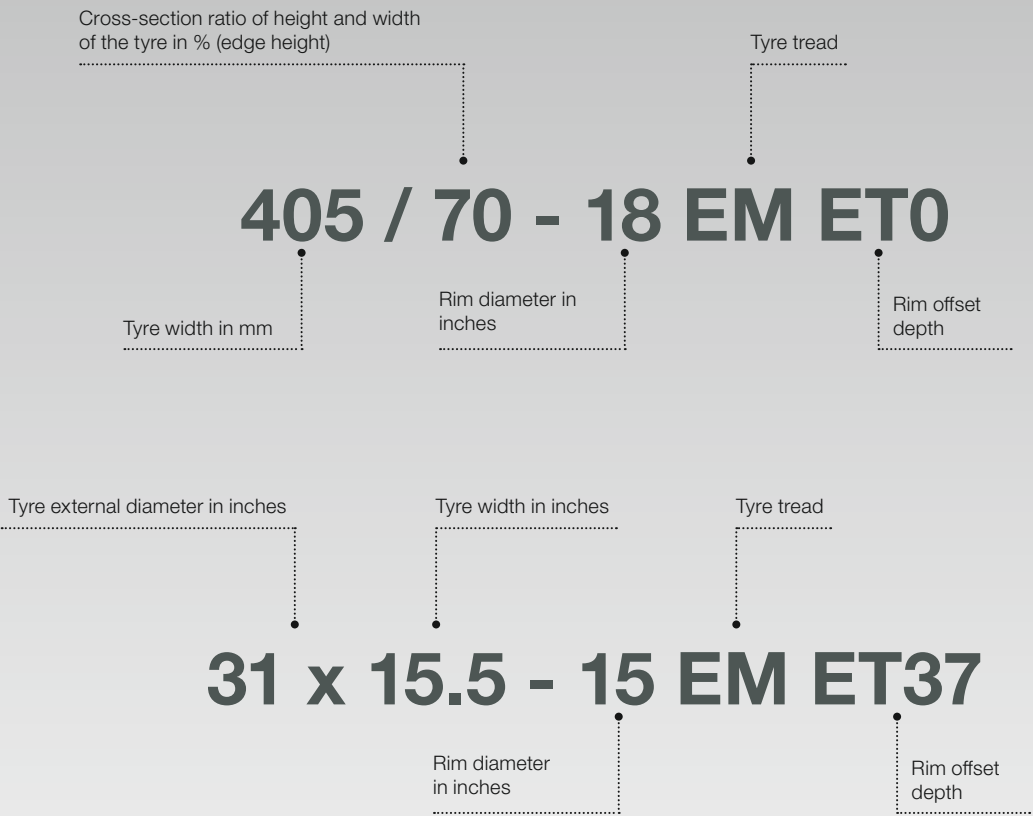
All values with the standard bucket.

Load-bearing capacity diagrams.

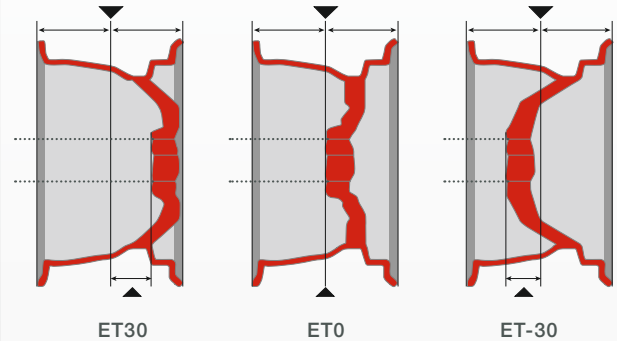


Tyre names.

At first glance tyre names look cryptic - they are generally made up of schematic information. The following page will explain what this has to do with the wheel offset and what the numbers and letters in the tyre name stand for.



- Offset depth explanation:**
The inside of the rim is to the left, the outside of the rim is to the right and the dotted line indicates the axle.
- **ET30** = If a narrow tyre with a positive offset depth is selected, the tyre does not, where applicable, widen the machine's overall width. This is suitable if the machine needs to fit through narrow passageways.
 - **ET0** = A compromise between narrow machine width and good stability.
 - **ET-30** = If a tyre with a negative offset depth is selected, the tyre does not, where applicable, widen the machine's overall width. A wide tyre and contact area increases stability.



Tyre treads.



EM treads
Thanks to the almost parallel lamellas, the EM tread is particularly well-suited to loose ground, such as sand, soil and gravel. Thanks to the high thrust transmission, this tyre has a large footprint and runs very smoothly on the road.



AS tread
The tapered lamellas ensure safe driving, especially on greasy and dirty terrain.



SureTrax tread
The SureTrax tread impresses with a large contact surface as well as a high lift capacity. It is ideal for solid and other hard surfaces.



RP treads
Due to the large contact surface, the ground is traversed gently. This makes the RP tread particularly suitable for application on lawns.



MPT tread
The MPT tread offers the perfect combination of good traction on uneven ground conditions as well as fast road crossings.



Multi-use
The multi-use tread was specially designed for year-round use and various climate conditions. In summer, it provides good traction on loose surfaces. In winter, it offers stability on snow and slippery driving surfaces.

Vibration characteristic values.

| Typical operating conditions | Mean value | | | Standard deviation (s) | | |
|--|--|--|------------------------------------|--|--|------------------------------|
| | $1,4 \cdot a_{w,eqx}$ [m/s ²] | $1,4 \cdot a_{w,eqy}$ [m/s ²] | $a_{w,eqz}$ [m/s ²] | $1,4 \cdot s_x$ [m/s ²] | $1,4 \cdot s_y$ [m/s ²] | s_z [m/s ²] |
| VIBRATIONS | | | | | | |
| LOAD TYPE | | | | | | |
| Compact wheel loader (operating weight < 4,500 kg) | | | | | | |
| Wheel loader (operating weight > 4,500 kg) | | | | | | |
| Load and carry (load and transport work) | 0.94 | 0.86 | 0.65 | 0.27 | 0.29 | 0.13 |
| Load and carry (load and transport work) | 0.84 | 0.81 | 0.52 | 0.23 | 0.20 | 0.14 |
| Application in quarrying (harsh application conditions) | 1.27 | 0.79 | 0.81 | 0.47 | 0.31 | 0.47 |
| Delivery drive | 0.76 | 0.91 | 0.29 | 0.33 | 0.35 | 0.17 |
| V-operation | 0.99 | 0.84 | 0.54 | 0.29 | 0.32 | 0.14 |

- Whole-body vibrations:**
- Each machine is equipped with an operator's seat that meets the requirements of EN ISO 7096:2000.
 - When the loader is properly used, whole body vibration varies from below 0.5 m/s² up to a short-term maximum value.
 - To calculate the vibration values according to ISO/TR 25398:2006, it is recommended to use the values specified in the table. The actual application conditions are to be considered.

- Like wheel loaders, telehandlers are to be classified according to operating weight.
- Hand-arm vibrations:**
- The hand-arm vibrations are no more than 2.5 m/s².



WEIDEMANN

designed for work

Weidemann – traditionally efficient.

For decades, our mission has been to lighten the load of commercial agriculture by the mechanisation of stable and yard operations. This led to the design and development of the Hoftrac®, which has become a generic term for its own equipment category – the original comes from Weidemann. The close co-operation between the Weidemann developers and our end users has repeatedly led to innovative concepts and a sophisticated product programme with high usability and

mature technology. We stand by this and continue to pursue our chosen path. Our customers benefit from high productivity, investment security and have a strong partner in Weidemann, who is always at their side. Our machines and services perform at a high level with a work operation that never fails to impress. Made precisely for this. Weidemann – designed for work.



Weidemann – your strong partner.

All-round care.



Comprehensive dealer network.

Weidemann has a wide network of select dealers in Germany and Europe. Each dealer is part of a well-organised system. In addition to consulting and selling new machines, our dealers are happy to provide you with reliable customer service and supply you with spare parts. Weidemann offers regular training for dealers so that your contact partners are always up to date.



Attractive financing programme.

In Germany, Weidemann offers attractive options for financing or leasing machines thanks to various framework agreements. Weidemann distributors also offer various financing options at the international level. Get in touch with your local contact partner to find out about current conditions.



Personal training and instruction.

When you decide to purchase a Weidemann machine, you will not be left in the dark. When the machine is handed over, you and your entire team will receive detailed instructions on the operation and maintenance of the machine. If you would like to know more, simply contact your dealer. They are just around the corner and will be happy to help without bureaucracy.



Speed is of the essence in the spare parts sector!

As our Weidemann machines are generally in use every day, it must be possible to repair your machine as quickly as possible. For this, Weidemann has a central spare parts warehouse and makes it possible for specialist dealers to access an electronic 24 hr order service and delivery within Europe of 24 hr. Many of our dealers also have their own good range of spare parts and maintenance items so that the most accessible parts are available on site.



WEIDEMANN

designed for work

The Weidemann product range.



The multifunctional Hoftracs®.
Powerful helper for every application.



The powerful wheel loader.
Available either with load arm or telescopic arm.



The compact telehandler.
Aim high with optimal stability.



Attachments and tyres.
Your Weidemann machine becomes a multi-tool!
The optimal attachment and the right tires for every task.



WM.EMEA.10272.V05.EN-GB/03/2025

Weidemann GmbH

Elfringhäuser Weg 24
34497 Korbach
Germany
Tel. +49(0)5631 50 16 94 0
Fax +49(0)5631 50 16 94 666
info@weidemann.de
www.weidemann.com