



**WACKER  
NEUSON**  
*all it takes!*

## SM100

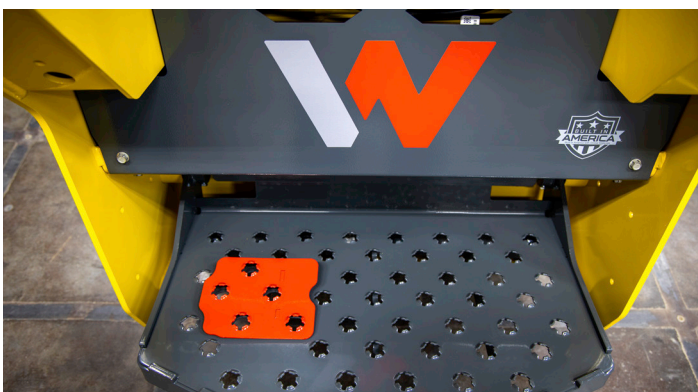
### Tracked Mini Loader

5 years /  
5,000 hours  
warranty

## Versatility is the real driver of this machine.

The versatile, stand on SM100 tracked mini loader is an excellent addition to any hire or contractor fleet and is the perfect fit for landscaping projects, light site working, grading, auguring, general material handling and much more!

- Powered by a 24.7 hp Yanmar turbo charged diesel
- Market exclusive and patented, Idler-roller carrier
- Forward angled joysticks reduces operator fatigue



## Productivity and Versatility.

The standard 230 mm wide tracks provide low ground pressure, reducing turf disturbance. The overall machine width of 901 mm fits through doorways, gates and other tight spaces. Common industry hitch interface for use with compatible attachments. Optimised radial lift path provides vertical lift performance for dumping in high sided trucks or reaching into truck beds. Step-up and go concept makes operation easy. Spring-suspended platform offers comfort and stability and includes an operator presence system that prevents accidental

machine movement when the operator steps off the platform. In addition to its compact design, the SM100 is comfortable for operators with ergonomic joysticks and reference handles, plush padding, and wide spring-suspension platform for added stability. The strong lift capacity and high hinge pin of the SM100 height allows for easy loading into high sided trucks and dumpsters. The heavy duty undercarriage construction and fast travel speeds means you can do more with less.

The construction equipment warranty terms and policy (Terms) covers all Wacker Neuson products sold by and in the Wacker Neuson Pty Ltd region of Australia and New Zealand. Product Registration is required to activate extended warranty period on eligible machines. Machines not registered within 30 days of purchase will have the Statutory 1 Year/1,000 hours warranty period.

# SM100 Technical Information.

	Units	SM100
<b>Hydraulic</b>		
Flow rate	l/min	49
Auxilliary relief pressure	bar	210
<b>Mechanical – Output Details</b>		
Ground pressure (standard track)	bar	0.2
Travel speed	km/h	8.4
<b>Mechanical Details</b>		
Overall length without bucket	mm	2,141
Overall length with bucket	mm	2,742
Overall width without bucket	mm	902
Height	mm	1,478
Bucket hinge pin height	mm	2,176
Bucket roll back at ground	°	25
Bucket roll back at maximum height	°	92
Angle of departure	°	25
Bucket dump height at maximum height	mm	1,595
Bucket dump angle at maximum height	°	42
Operating weight	kg	1,497
Track width	mm	230
Ground clearance	mm	198
Length of track on ground	mm	1,093
Dump reach at maximum height	mm	557
<b>Engine</b>		
Cooling		Water-cooling
Cylinder		3.0
Cylinder capacity	cm³	1,266
Operating power	KW	18.4
Operating engine speed	1/min	2,600
Manufacturer		Yanmar
Engine designation	FT	3TNV80
<b>Operating Fluids</b>		
Fuel tank capacity	l	64
<b>Chassis</b>		
Tip Load	kg	1,295
Rated operating capacity at 50% tip load	kg	647
Rated operating capacity at 35% tip load	kg	453

